



MOUNA REBEIZ



Leila Heller Gallery

I - 87 Alserkal Avenue

Al Quoz 1, Dubai, UAE

www.leilahellergallery.com

Mouna Rebeiz

Colour Power

LEILA HELLER GALLERY.

What would the world be without color? How would we perceive reality without red, blue or green? Can we imagine living in black and white? Color is what gives life its intensity, its depth, but also the possibility of joy. It is light, a vital momentum, energy. In an attempt at total renunciation, in the exile of solitude and a silent retreat, Mouna Rebeiz endeavored to grasp what the purest, most authentic and “truest” in color is. Kandinsky had already noted that “Vermilion attracts and irritates the beholder like the flame, which has always moved man to irresistibly contemplate it. Bright lemon-yellow eventually hurts our eyes in the same way as the shrill sound of a trumpet pierces our ears. Our eyes blink, they can no longer bear to look and will seek relief in the tranquil depths of blue or green.” (Concerning the Spiritual in Art, 1911). Later, Yves Klein invented a shade of blue that now bears his name...

Can painting be considered a form of metaphysics that attempts to solve the enigma of color? Merleau-Ponty aptly suggests, in *Eye and Mind*, a certain vision of the world: “Painting celebrates no other enigma than that of visibility.” Mouna recreates this same vision in this attempt to penetrate the enigma of color, which is also that of visibility. But Mouna Rebeiz remains faithful to her own spirit, faithful to that mystery that characterizes her creative momentum, as shown by these twelve canvases in which we plunge ourselves: “We use colors but we paint with feeling” (Jean Chardin).

Elsa Godart

Philosopher and psychoanalyst

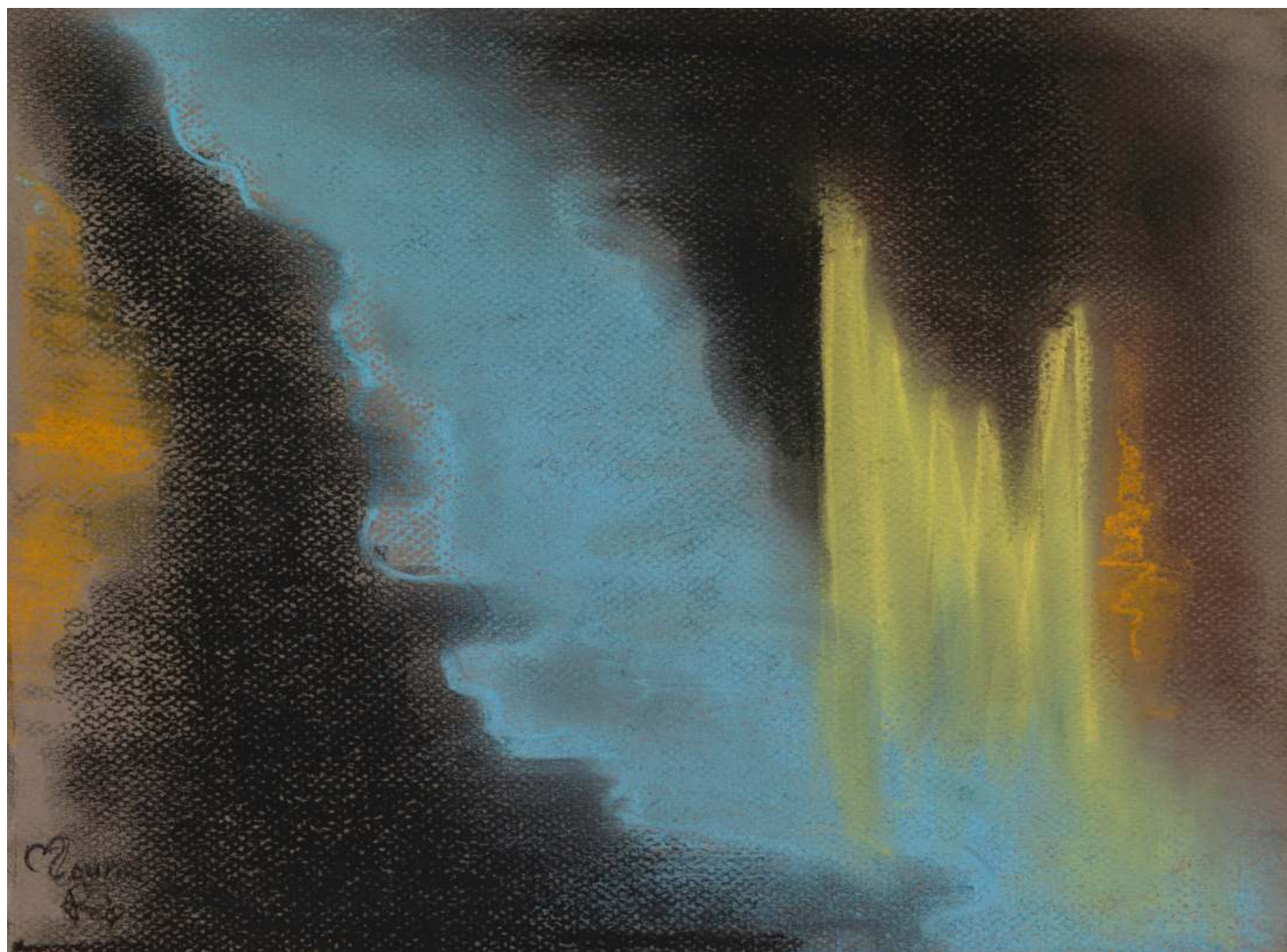
Research fellow at Université Gustave Eiffel





Handwritten signature or text, possibly reading "C. J. 3" or similar, located in the bottom left corner.





I, 2021
Dry Pastel
24 x 32 cm



II, 2021
Dry Pastel
24 x 32 cm



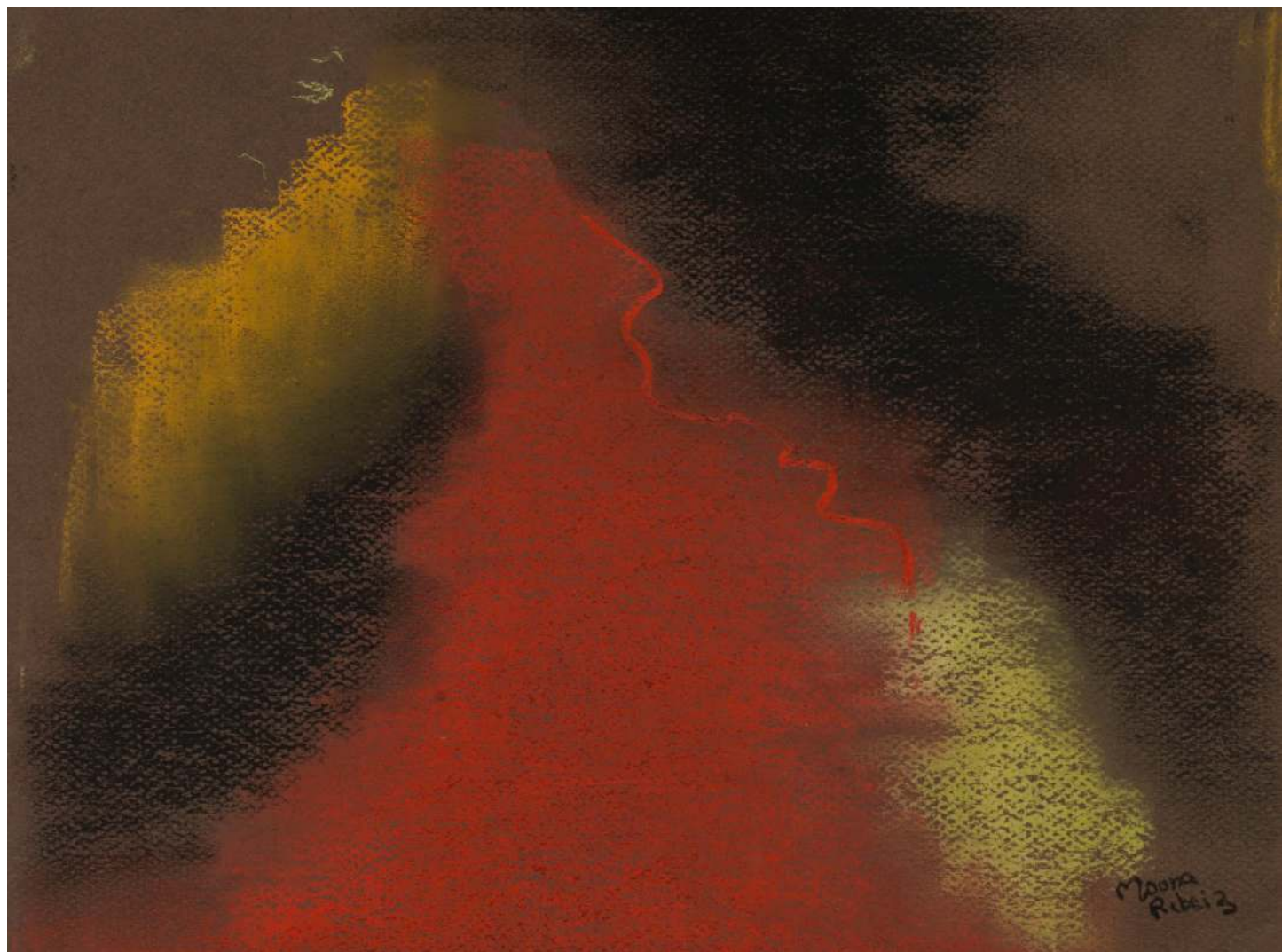
III, 2021
Dry Pastel
24 x 32 cm



IV, 2021
Dry Pastel
24 x 32 cm



V, 2021
Dry Pastel
24 x 32 cm



VI, 2021
Dry Pastel
24 x 32 cm



VII, 2021
Dry Pastel
24 x 32 cm

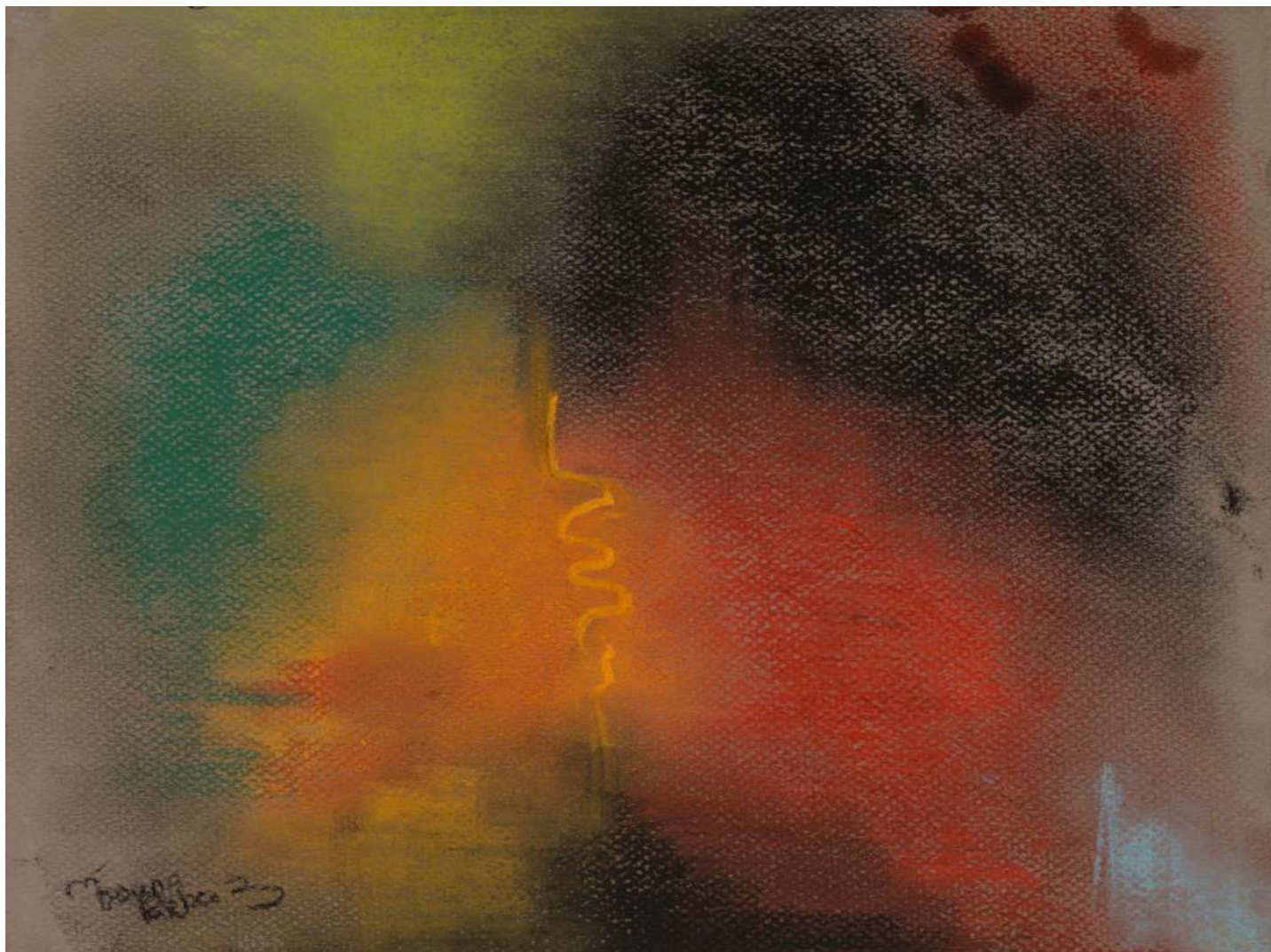


VIII, 2021
Dry Pastel
24 x 32 cm



M. Boudier
R. Chénier

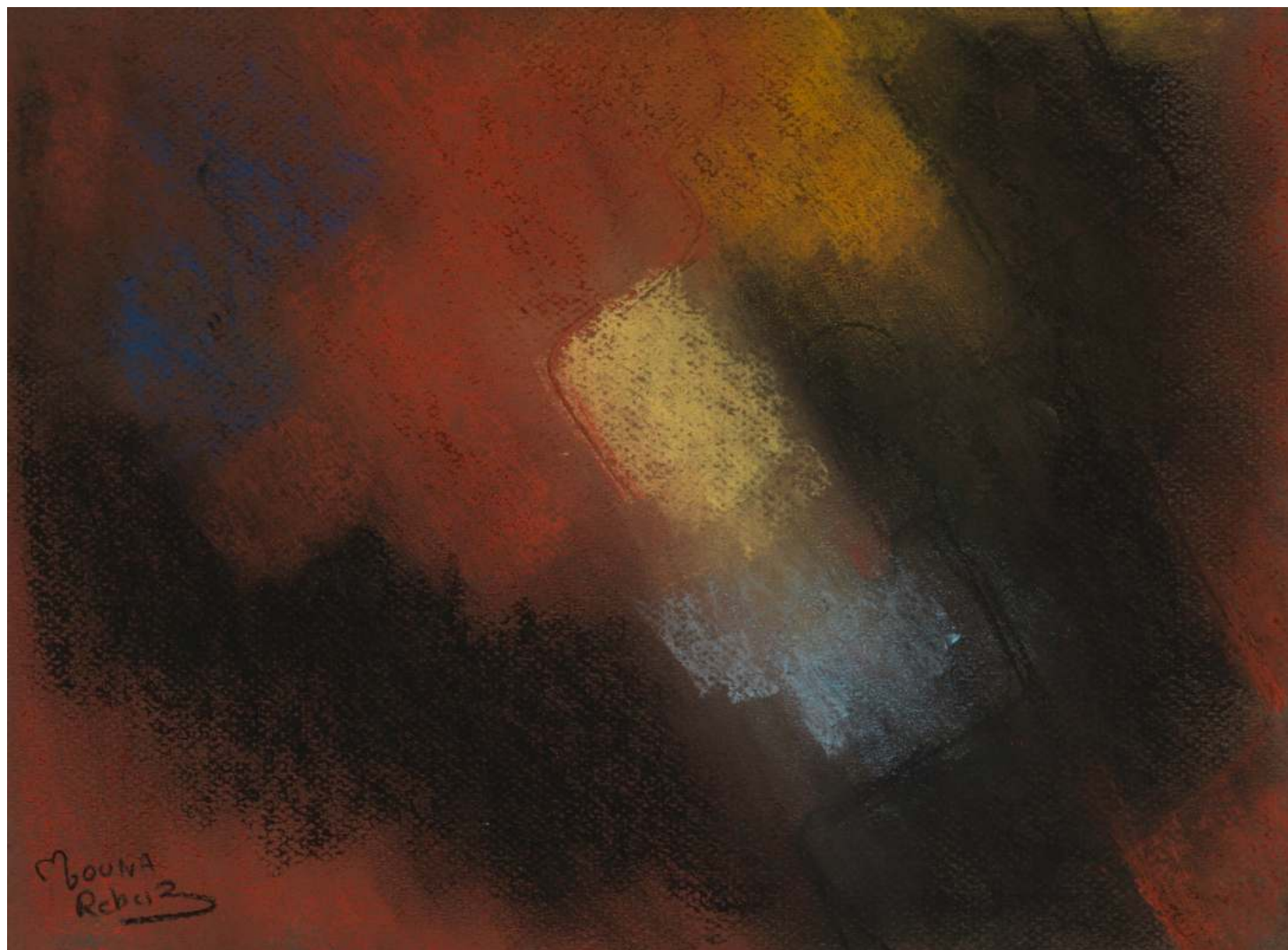
IX, 2021
Dry Pastel
24 x 32 cm



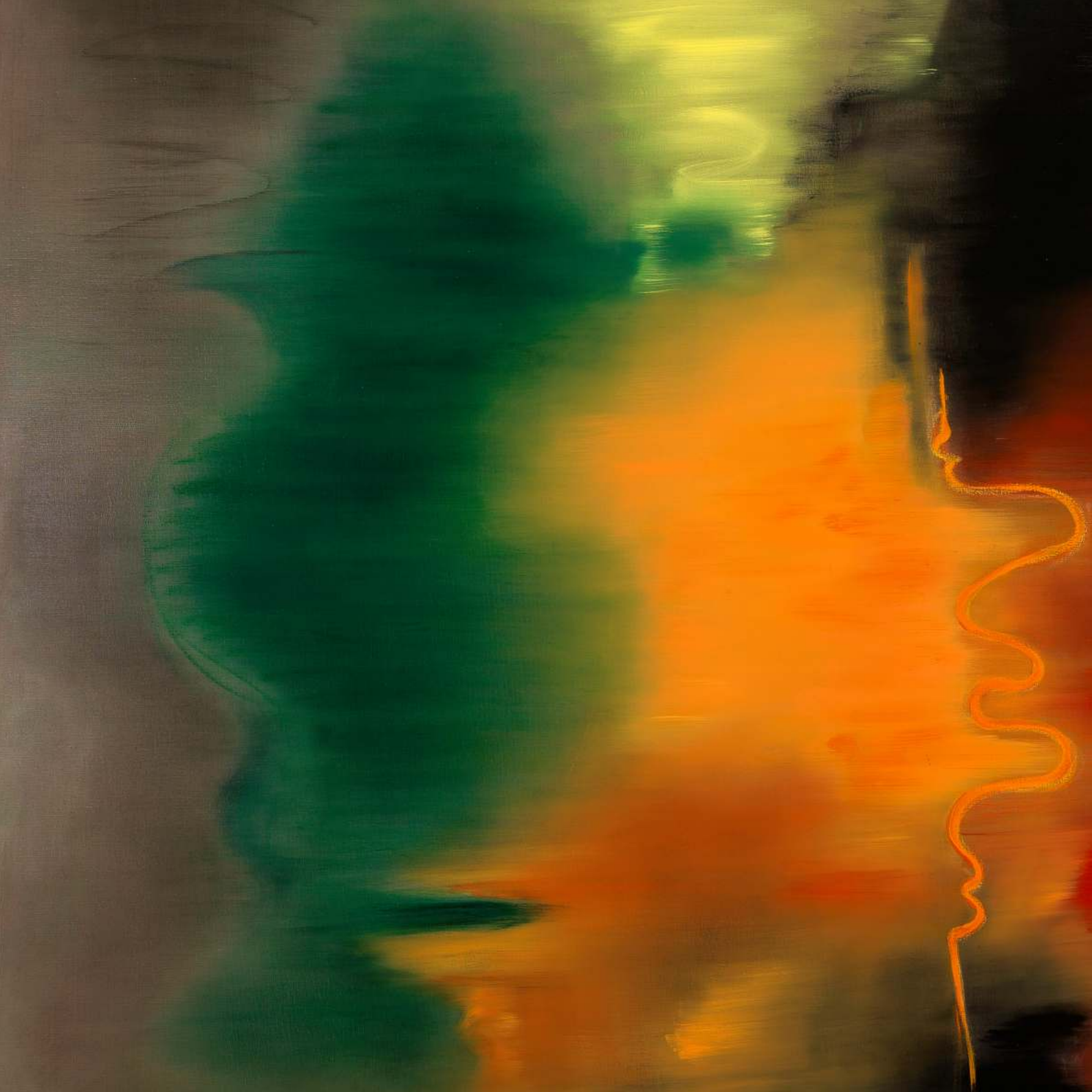
X, 2021
Dry Pastel
24 x 32 cm



XI, 2021
Dry Pastel
24 x 32 cm



XII, 2021
Dry Pastel
24 x 32 cm







I, 2021
Oil on Canvas
256 x 192 x 8 cm

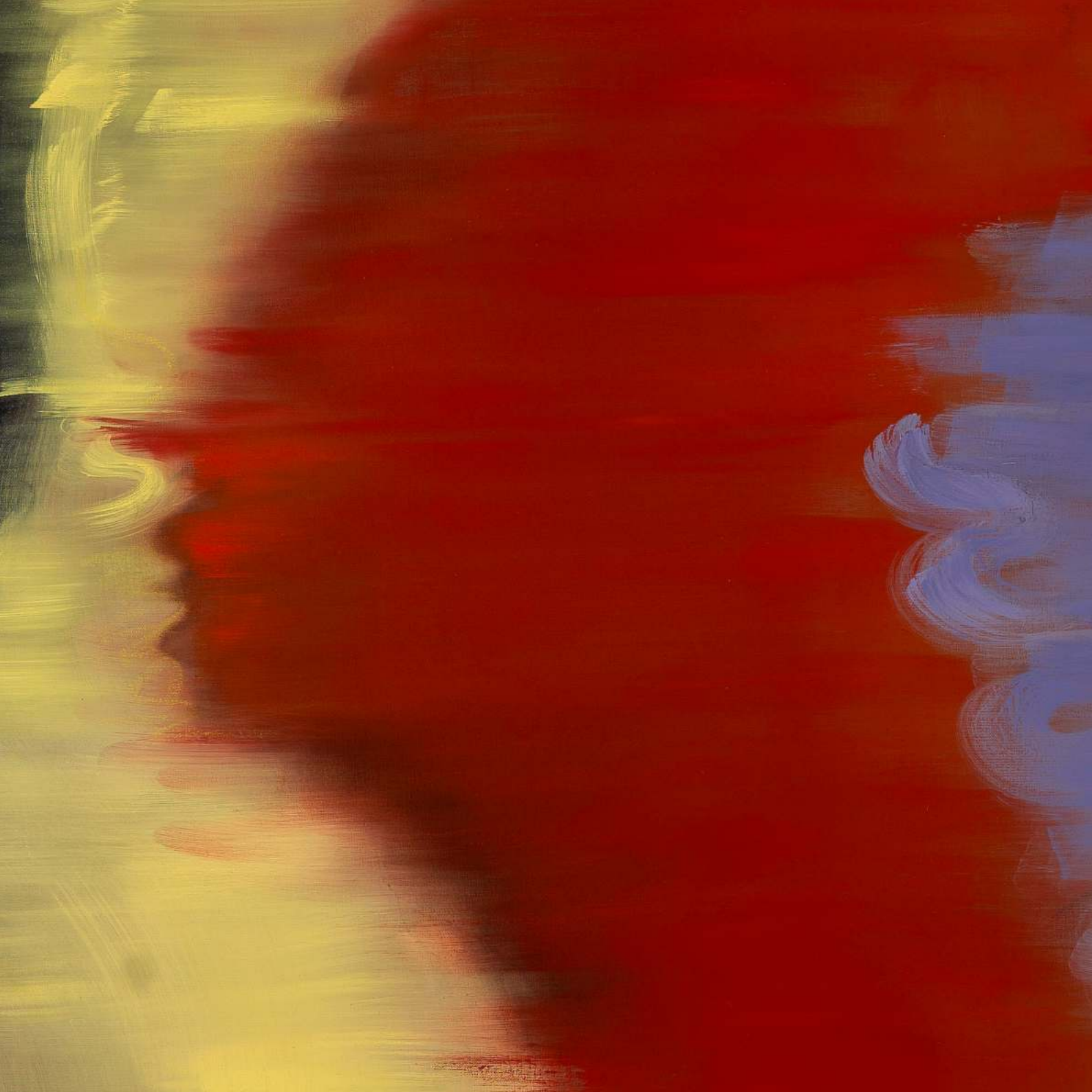


II, 2021
Oil on Canvas
256 x 192 x 8 cm





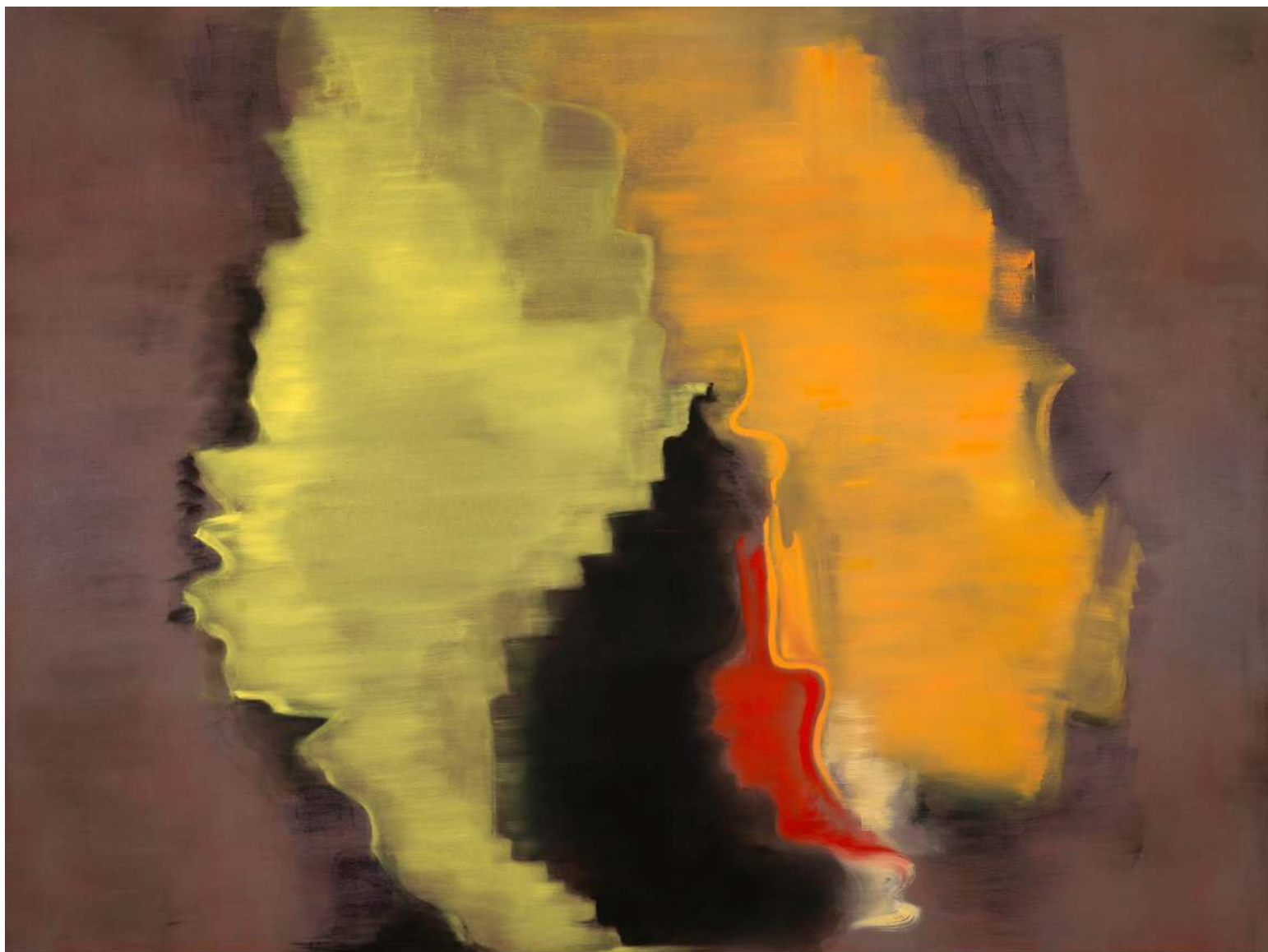
III, 2021
Oil on Canvas
256 x 192 x 8 cm







IV, 2021
Oil on Canvas
256 x 192 x 8 cm



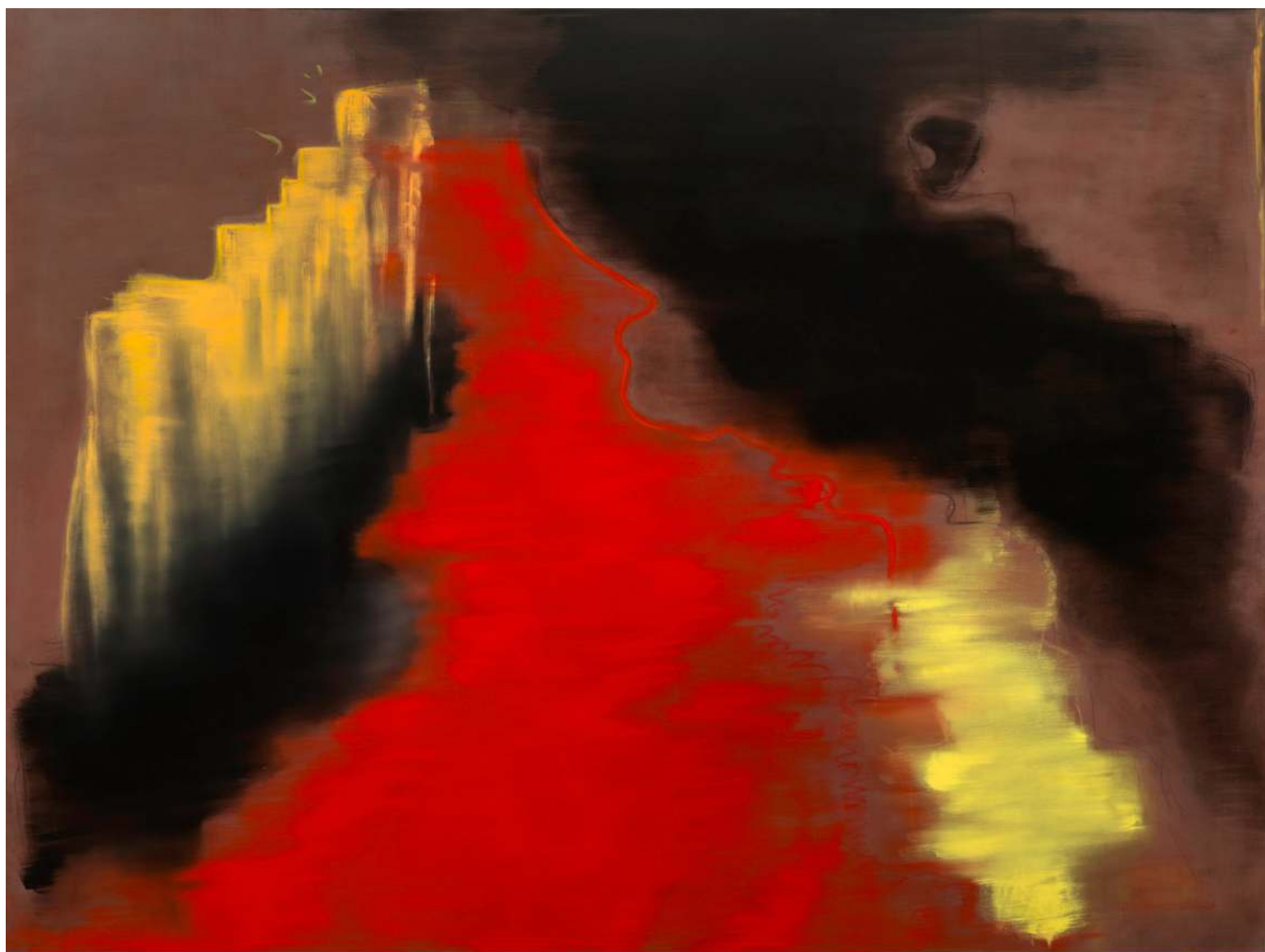
V, 2021
Oil on Canvas
256 x 192 x 8 cm



VI, 2021
Oil on Canvas
256 x 192 x 8 cm



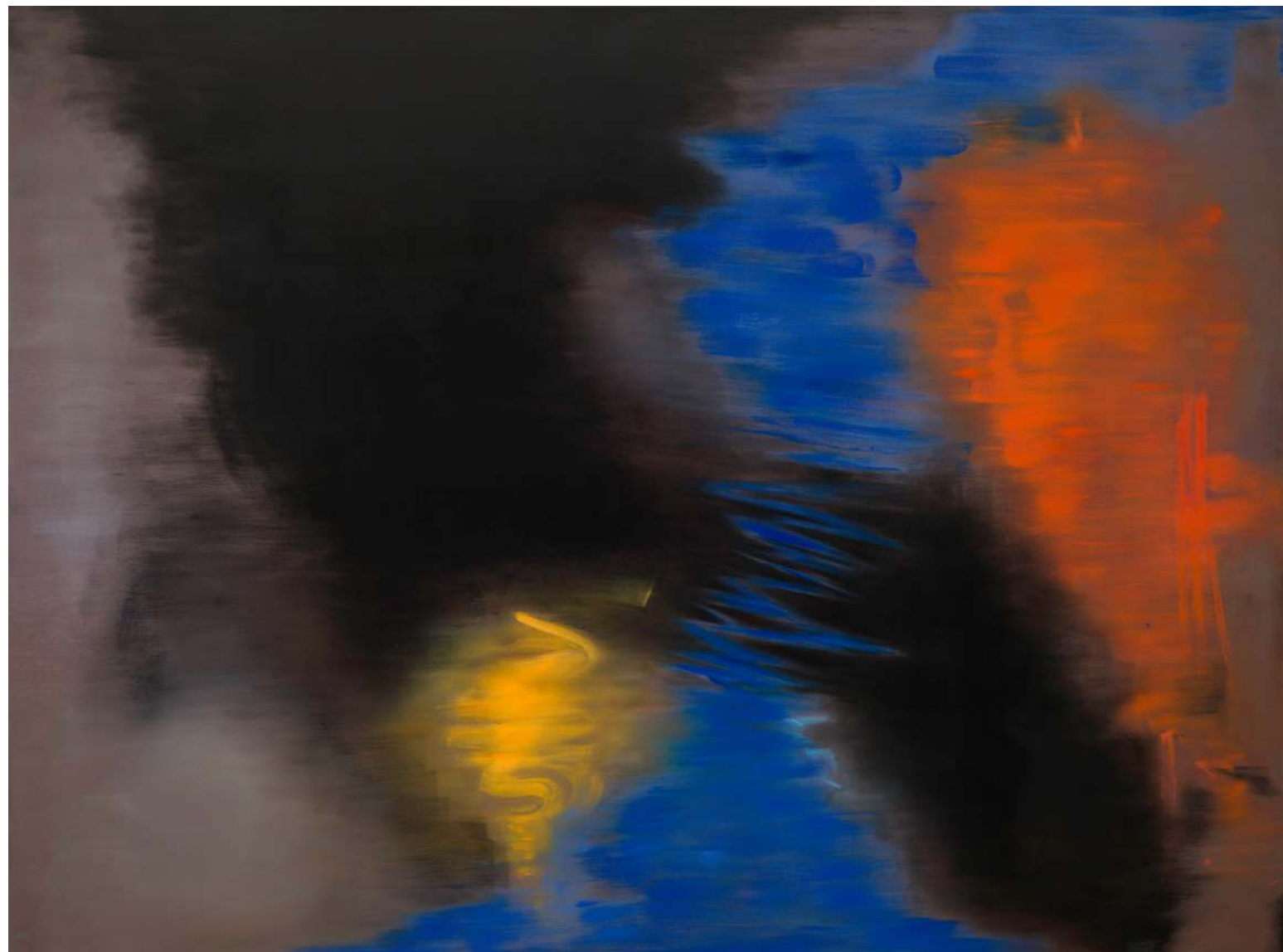




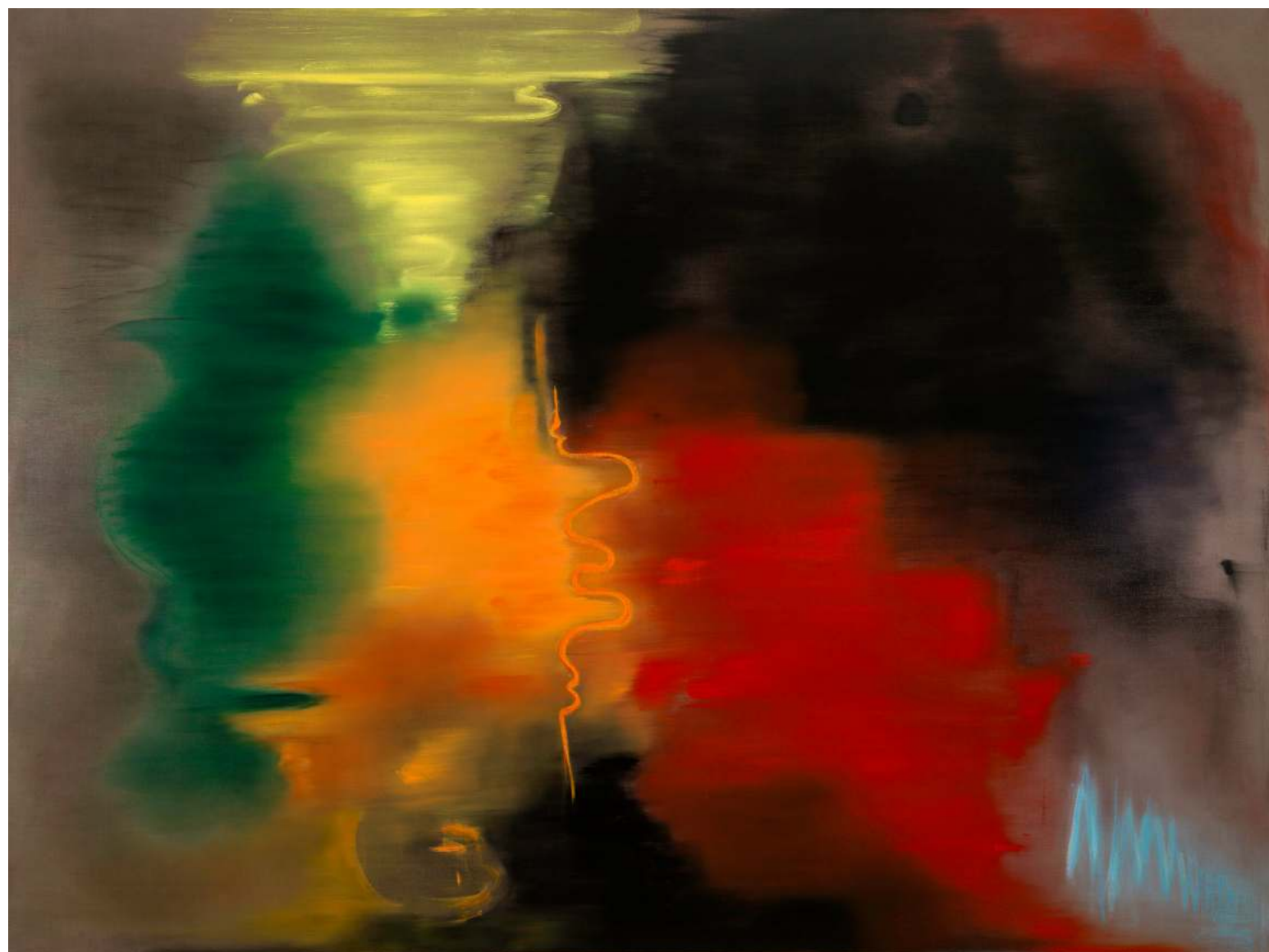
VII, 2021
Oil on Canvas
256 x 192 x 8 cm



VIII, 2021
Oil on Canvas
256 x 192 x 8 cm

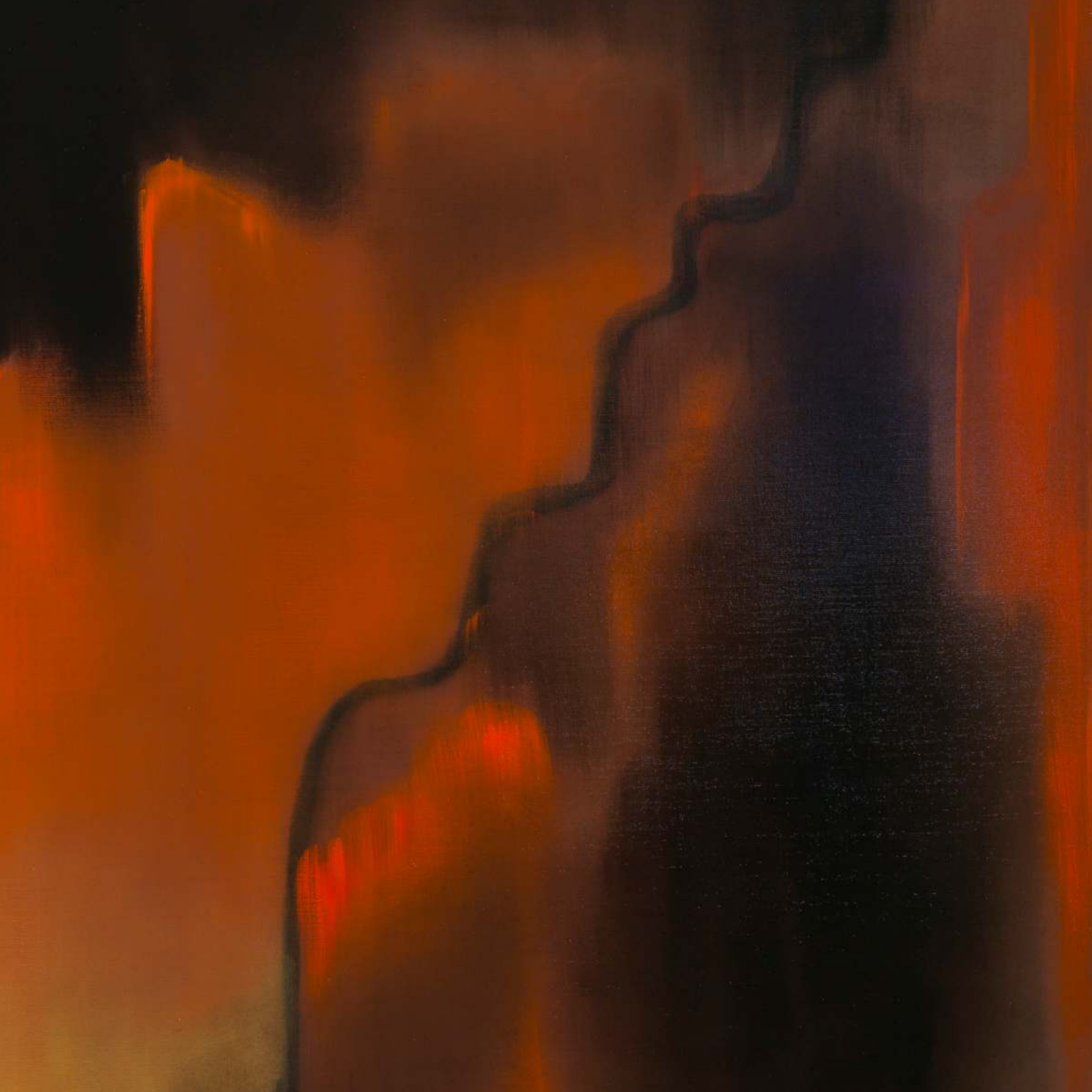


IX, 2021
Oil on Canvas
256 x 192 x 8 cm



X, 2021
Oil on Canvas
256 x 192 x 8 cm







XI, 2021
Oil on Canvas
256 x 192 x 8 cm





XII, 2021
Oil on Canvas
256 x 192 x 8 cm



Phaeton, 2020
Totem plexi - 8 puzzles
270 x 50 x 6 cm
Base: 55 x 55 x 6 cm

Cygnus, 2020
Totem plexi - 3 puzzles
108 x 50 x 6 cm
Base: 55 x 55 x 6 cm





Dragon Noir, 2020
Totem plexi - 7 puzzles
242 x 50 x 6 cm
Base: 55 x 55 x 6 cm

Shaina, 2020
Totem plexi - 8 puzzles
108 x 50 x 6 cm
Base: 55 x 55 x 6 cm





Shrunei, 2020
Totem plexi - 6 puzzles
214 x 50 x 6 cm
Base: 55 x 55 x 6 cm

Saori Kido, 2020
Totem plexi - 7 puzzles
242 x 50 x 6 cm
Base: 55 x 55 x 6 cm

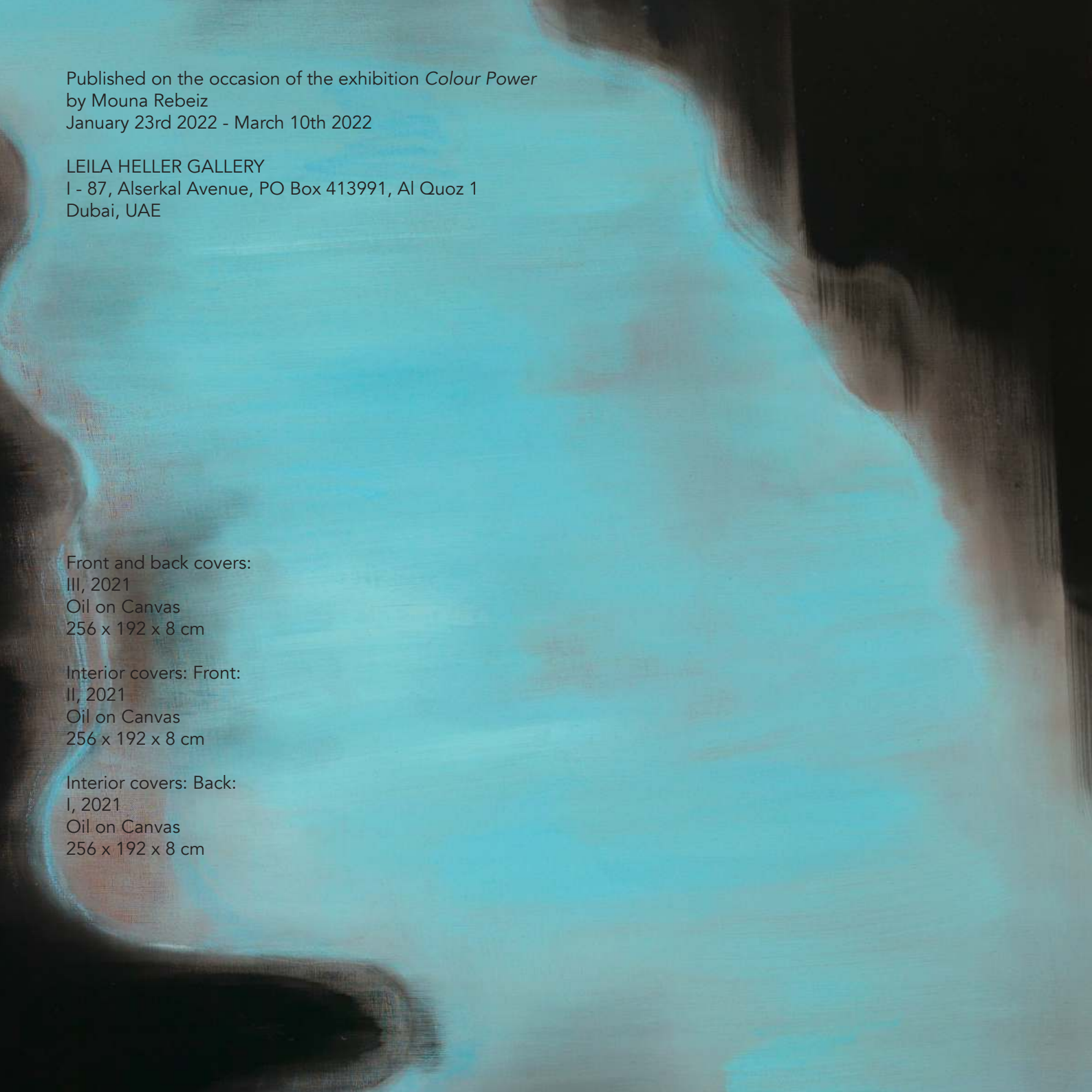


Leila Heller Gallery would like to thank Mouna Rebeiz for all her support to make this exhibition successful.

Images courtesy of the artist
Catalogue design by Lydia Popplewell

LEILA HELLER GALLERY
I - 87, Alserkal Avenue, PO Box 413991, Al Quoz 1
Dubai, UAE
www.leilahellergallery.com

Publication © 2022 LEILA HELLER GALLERY, Dubai

An abstract painting featuring a large, flowing shape in a vibrant teal or turquoise color. This shape is set against a dark, almost black background. The edges of the teal shape are soft and blended into the dark background, creating a sense of depth and movement. The overall composition is minimalist and evocative.

Published on the occasion of the exhibition *Colour Power*
by Mouna Rebeiz
January 23rd 2022 - March 10th 2022

LEILA HELLER GALLERY
I - 87, Alserkal Avenue, PO Box 413991, Al Quoz 1
Dubai, UAE

Front and back covers:
III, 2021
Oil on Canvas
256 x 192 x 8 cm

Interior covers: Front:
II, 2021
Oil on Canvas
256 x 192 x 8 cm

Interior covers: Back:
I, 2021
Oil on Canvas
256 x 192 x 8 cm

