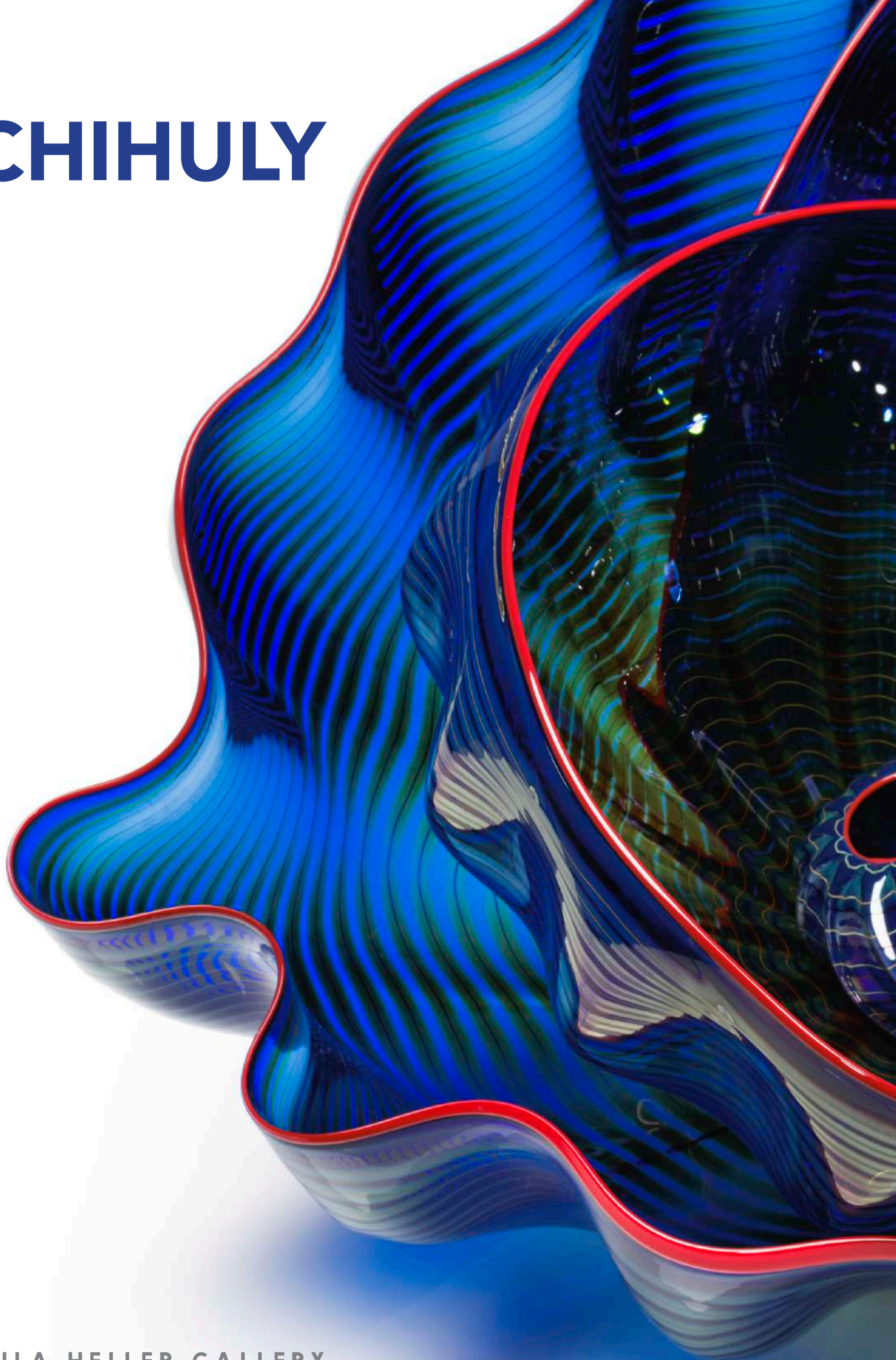


# CHIHULY



LEILA HELLER GALLERY.



**Chihuly:**  
*Four Decades of Iconic Work*

LEILA HELLER GALLERY.







## Chihuly:

### *Four Decades of Iconic Work*

*Chihuly: Four Decades of Iconic Work*, showcases works spanning nearly a 40-year period from 1985-2023 and celebrates both the monumental installations and more discrete works for which Chihuly is known. The collection features two new large-scale installations and over 50 sculptures in glass, as well as two-dimensional works, connecting various series and decades.

Synthesizing ideas and practices of the Studio Glass Movement in North America as well as the traditions of the Venetian Ateliers, Chihuly's ambitious six-decade long career has set the bar for glass in contemporary art and redefined the vernacular of abstraction.

From his iconic *Baskets* and delicate *Seaforms*, to the colorful *Macchia*, dynamic *Soft Cylinders*, and mesmerizing *Persians*, each piece in this exhibition embodies Chihuly's innovative techniques, bold use of color, and captivating forms.

A beacon within the exhibition, Chihuly's *Towers* are monumental glass sculptures

that redefine the spaces in which they are placed. Whether kaleidoscopic marvels or monochromatic wonders, they cast a spellbinding dance of light and shadow, reshaping environments with their luminous presence.

Also showcased are Chihuly's *Drawings* and *Light Drawings*, providing a window into the genesis of his creations. These two-dimensional marvels vividly translate his visionary spirit into a riot of colors and dynamic forms, weaving a tapestry of inspiration.

Chihuly's creations continue to enrapture audiences worldwide, and this presentation of works stands as a testament to his lifelong pursuit of pushing the boundaries of glass artistry.

Chihuly:  
*Four Decades of Iconic Work* is a promise of inspiration, enchantment, and endless wonder.

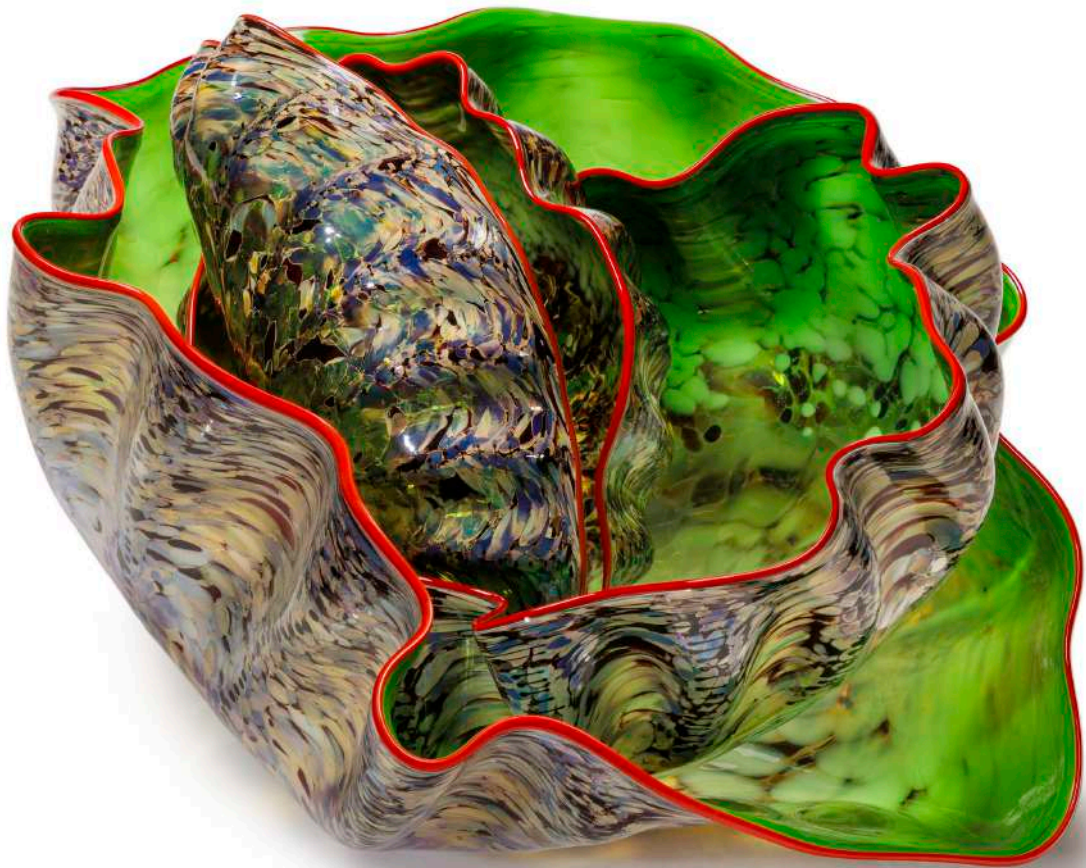
# Macchia

Motivated by a desire to use as many color combinations in one series as possible, Chihuly created *Macchia* (Italian for “spotted”) in 1981. The development of the series involved creating a technique for applying a layer of white between colors to prevent them from blending. Pieces of colored glass are fused onto the surface of the *Macchia* during the glassblowing process to produce the mottled effect for which this series is named.

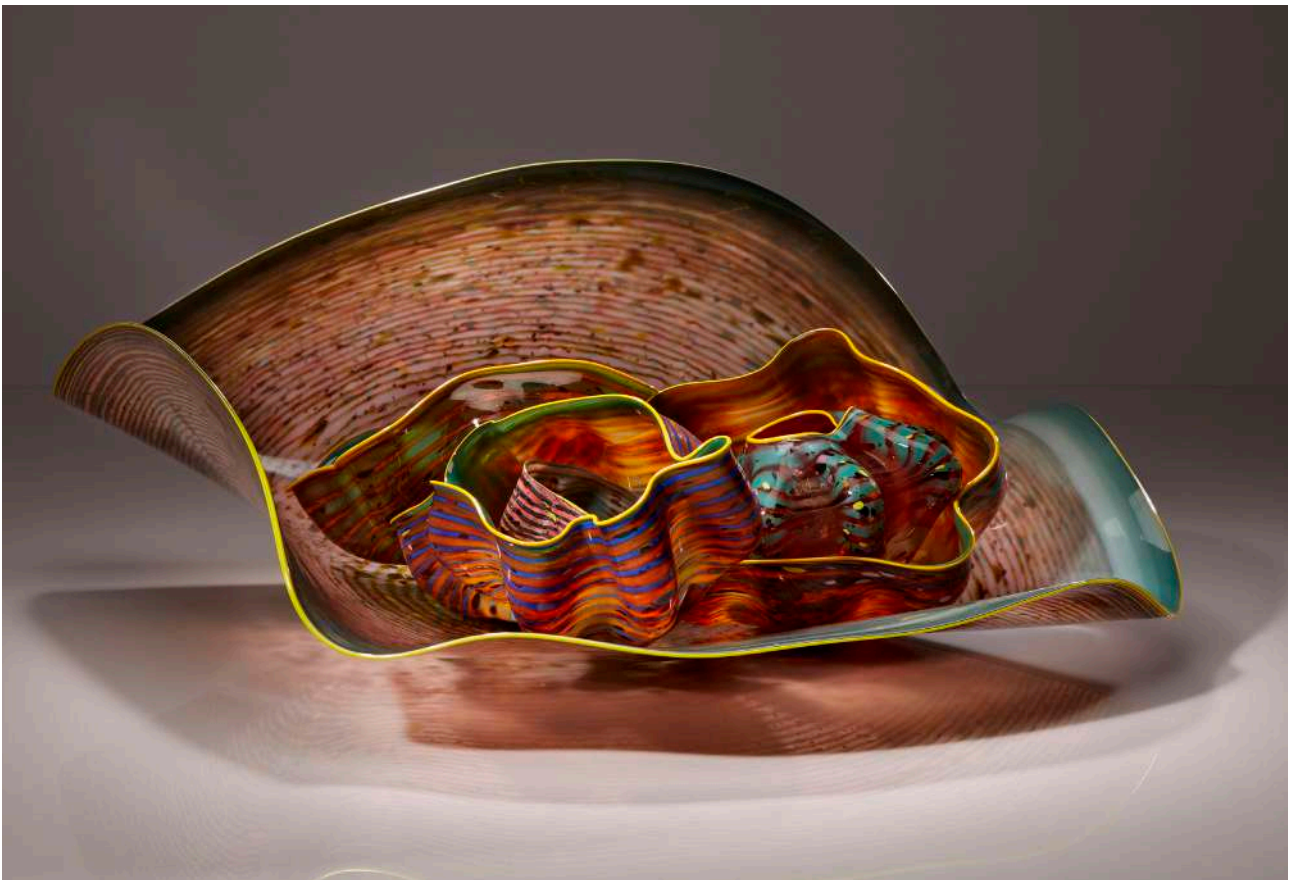
“The *Macchia* series began with my waking up one day wanting to use all 300 of the colors in the Hotshop. I started by making up a color chart

with one color for the interior, another for the exterior, and a contrasting color for the lip wrap, along with various jimmies and dusts of pigment between the layers of glass. Throughout the blowing process, colors were added, layer upon layer. Each piece was another experiment. When we unloaded the ovens in the morning, there was a rush of seeing something I had never seen before. Like much of my work, the series inspired itself. The unbelievable combinations of color—that was the driving force.”—Chihuly



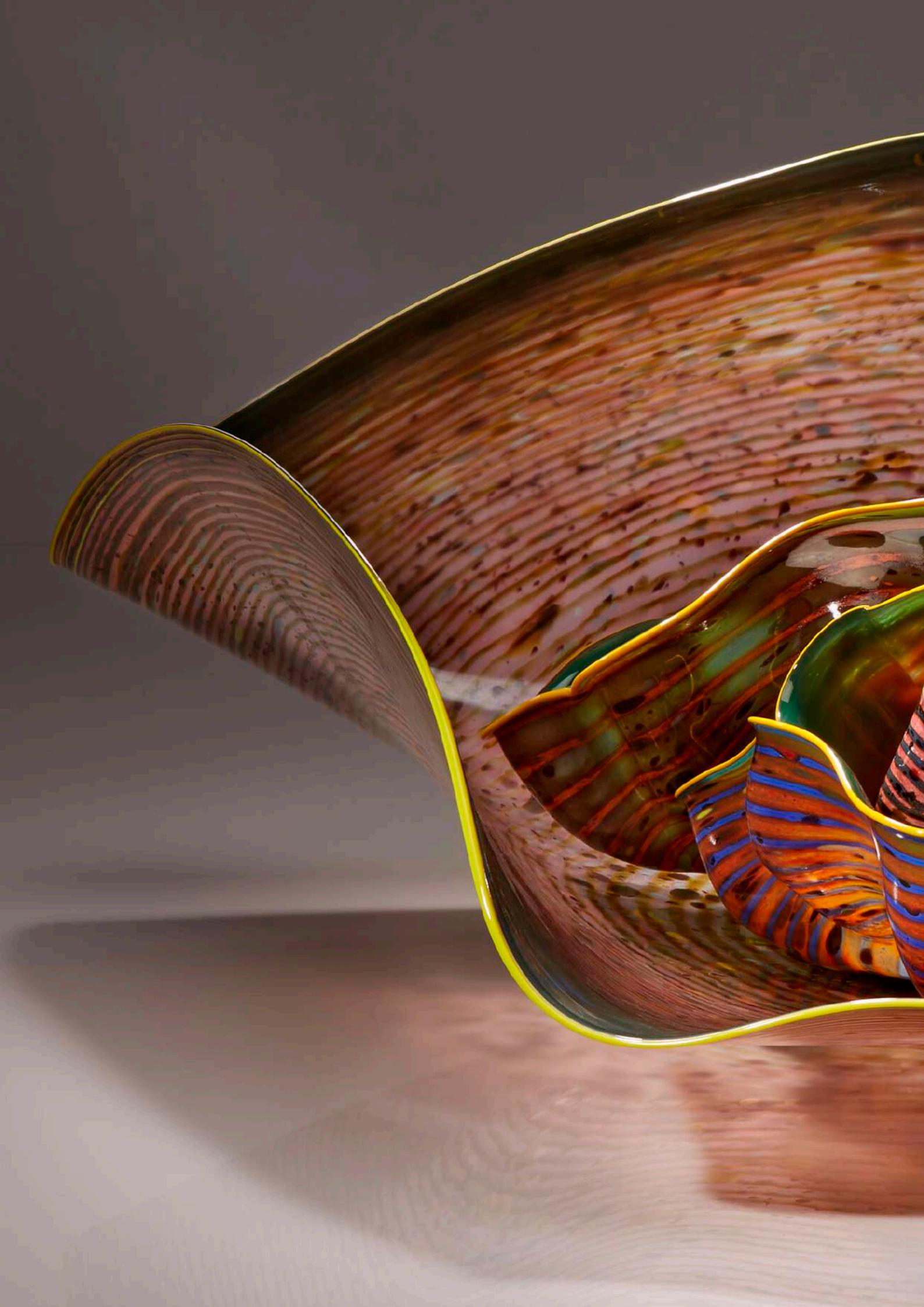


*Velvet Green Pheasant*  
*Macchia Set with Rich*  
*Red Lip Wraps, 2002*  
Blown glass  
27.5 x 57.5 x 42.5 cm



*Shades of Green Macchia Set  
with Yellow Lip Wraps, 1985*  
Blown glass  
30 x 77.5 x 70 cm





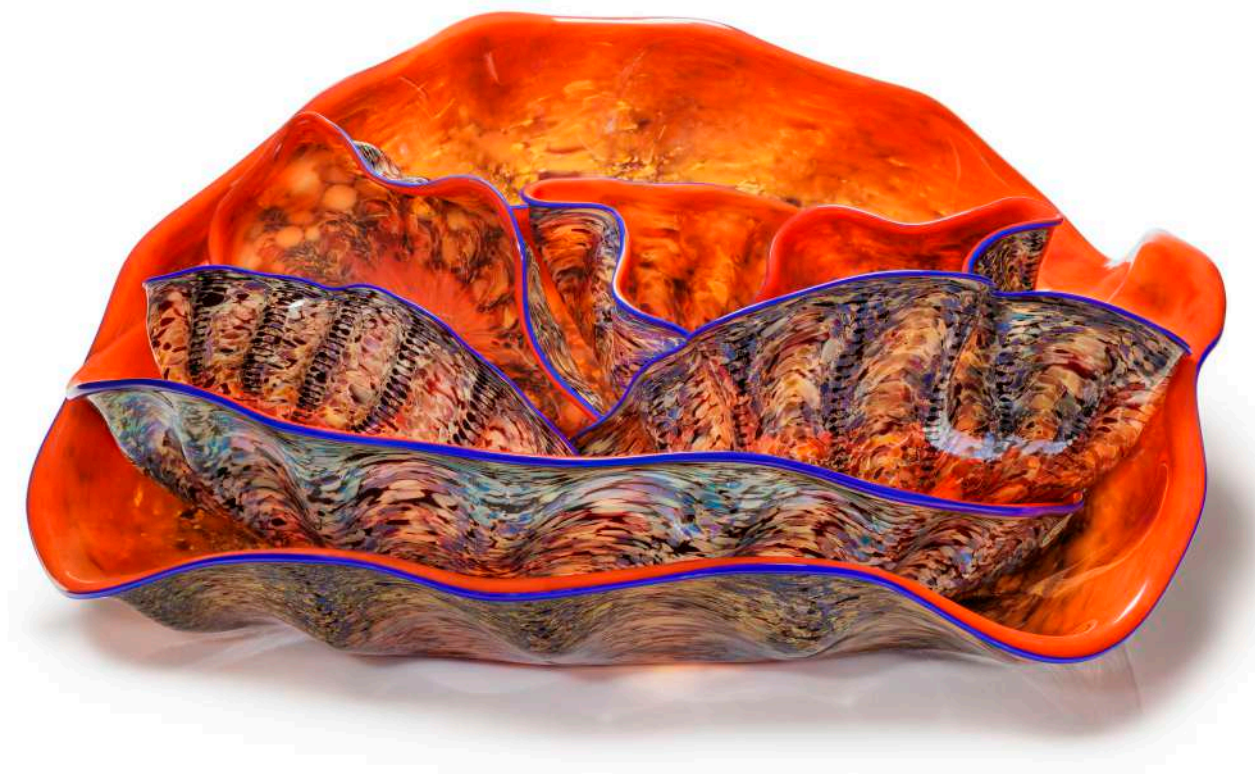


*Spectrum Blue Pheasant  
Macchia Set with Rubine  
Lip Wraps, 2002  
Blown glass  
30 x 75 x 62.5 cm*



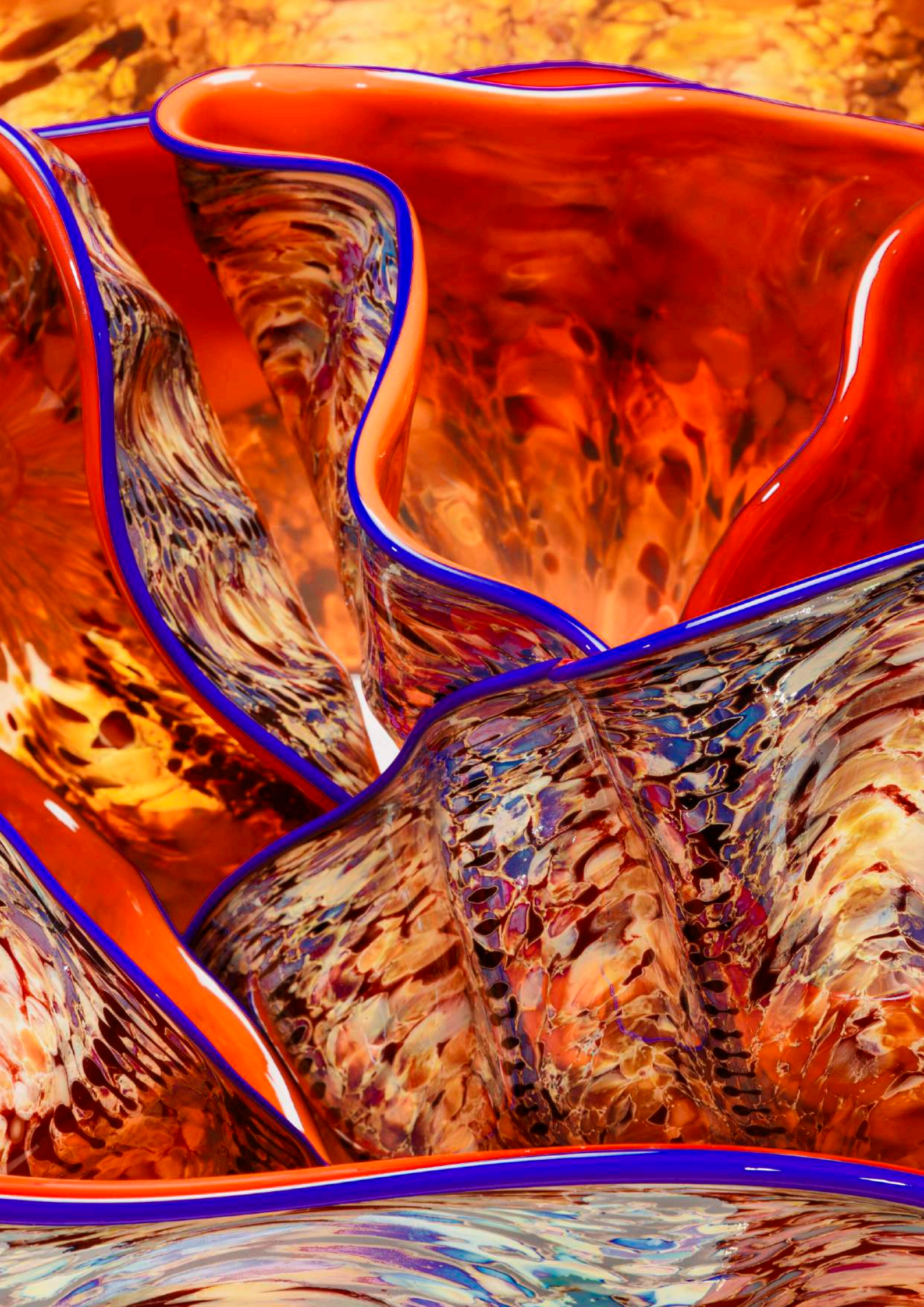


*Fluorite Violet Pheasant  
Macchia Set with Bright  
Red Lip Wraps, 2002*  
Blown glass  
27.5 x 55 x 37.5 cm

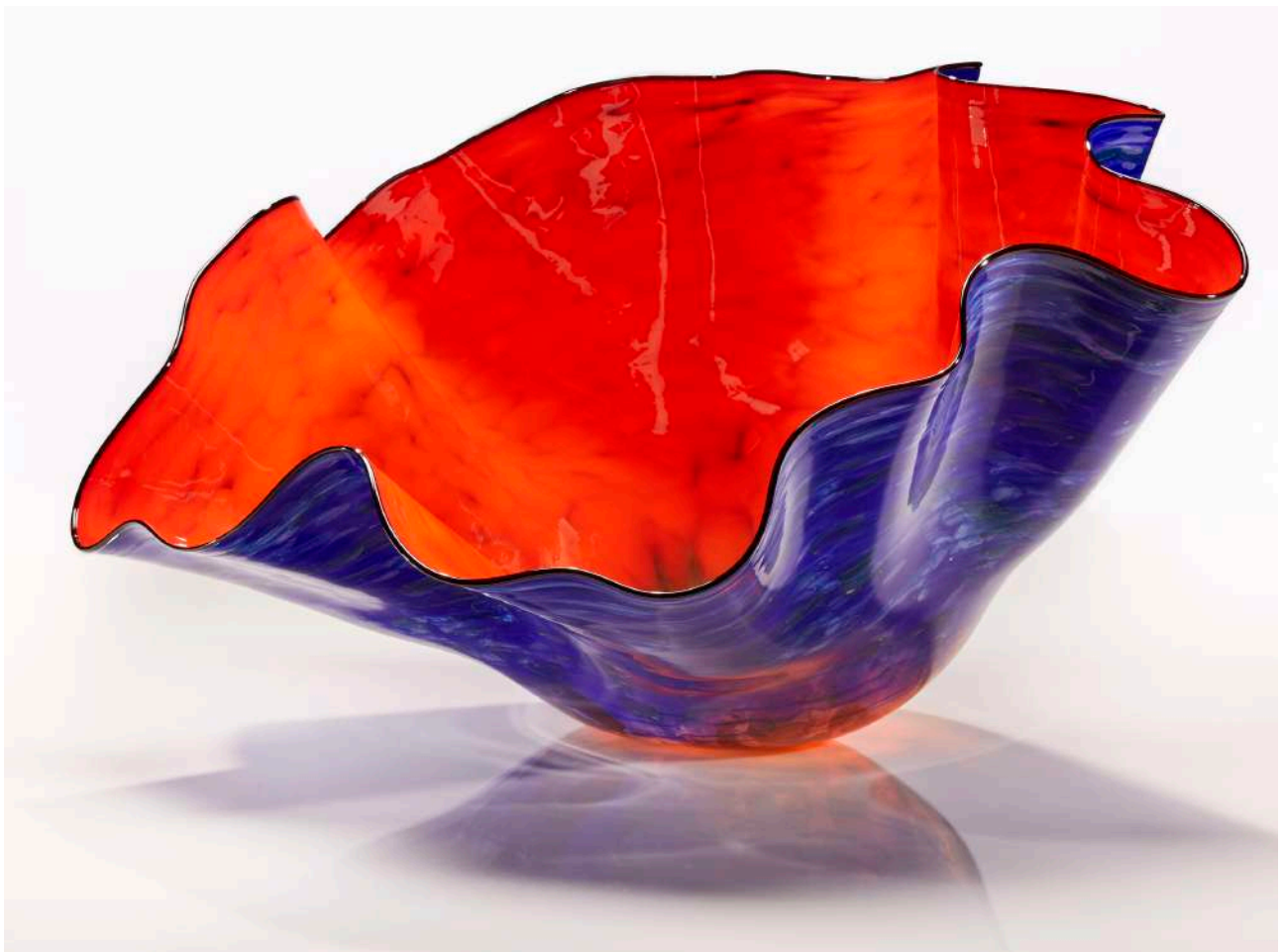


*Brazil Red Pheasant*  
*Macchia Set with*  
*Ultramarine Lip Wraps, 2002*  
Blown glass  
32.5 x 77.5 x 60 cm









*Coral Macchia with  
Obsidian Lip Wrap, 2017*  
Blown glass  
45 x 72.5 x 77.5 cm



*Coral Red Macchia with  
Indigo Lip Wrap, 2010*  
Blown glass  
47.5 x 87.5 x 77.5 cm





*Cobalt Yellow Black  
Macchia with Vermilion  
Lip Wrap, 2007  
Blown glass  
60 x 92.5 x 75 cm*



# Baskets



*Black Basket Set with Ultramarine Lip Wraps*  
2006, Blown glass, 40 x 87.5 x 75 cm

Chihuly began the *Basket* series in 1977. Experimenting with the use of fire, gravity, and centrifugal force, he found new ways to create asymmetrical vessels with thin, undulating walls. He often groups them in sets, with several small pieces nested within larger, wide-mouthed forms. Originally, *Baskets* were created in subdued earth-toned; the artist has revisited the series throughout his career experimenting with increased scale and exuberant colors.

"I saw beautiful Native American baskets at the Washington State Historical Society, and was struck by the grace of their slumped, sagging forms. I wanted to capture this in glass. The breakthrough for me was recognizing that heat and gravity were the tools to be used to make these forms."—Chihuly





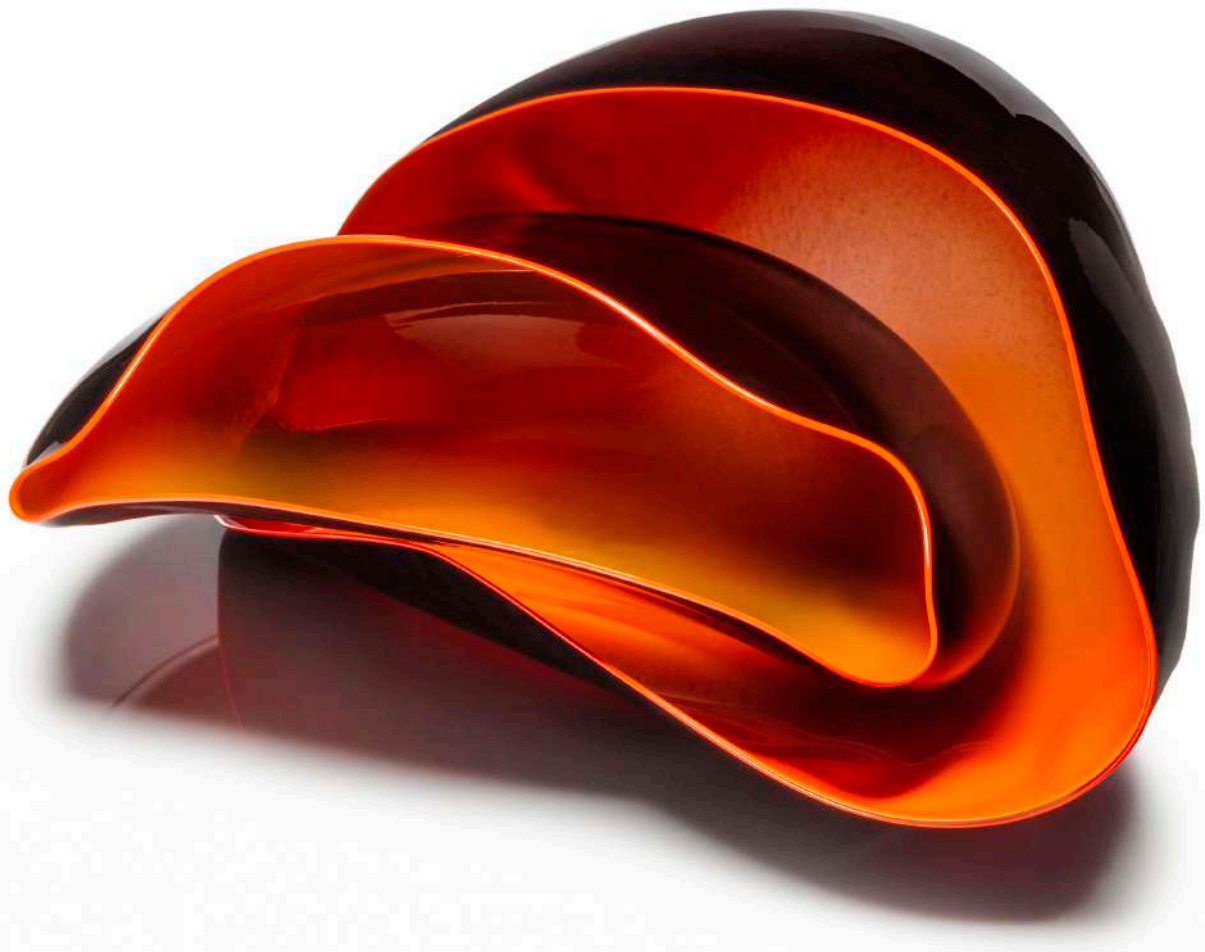
*Black Basket Set with  
Canary Lip Wraps, 2006*  
Blown glass  
47.5 x 107.5 x 90 cm



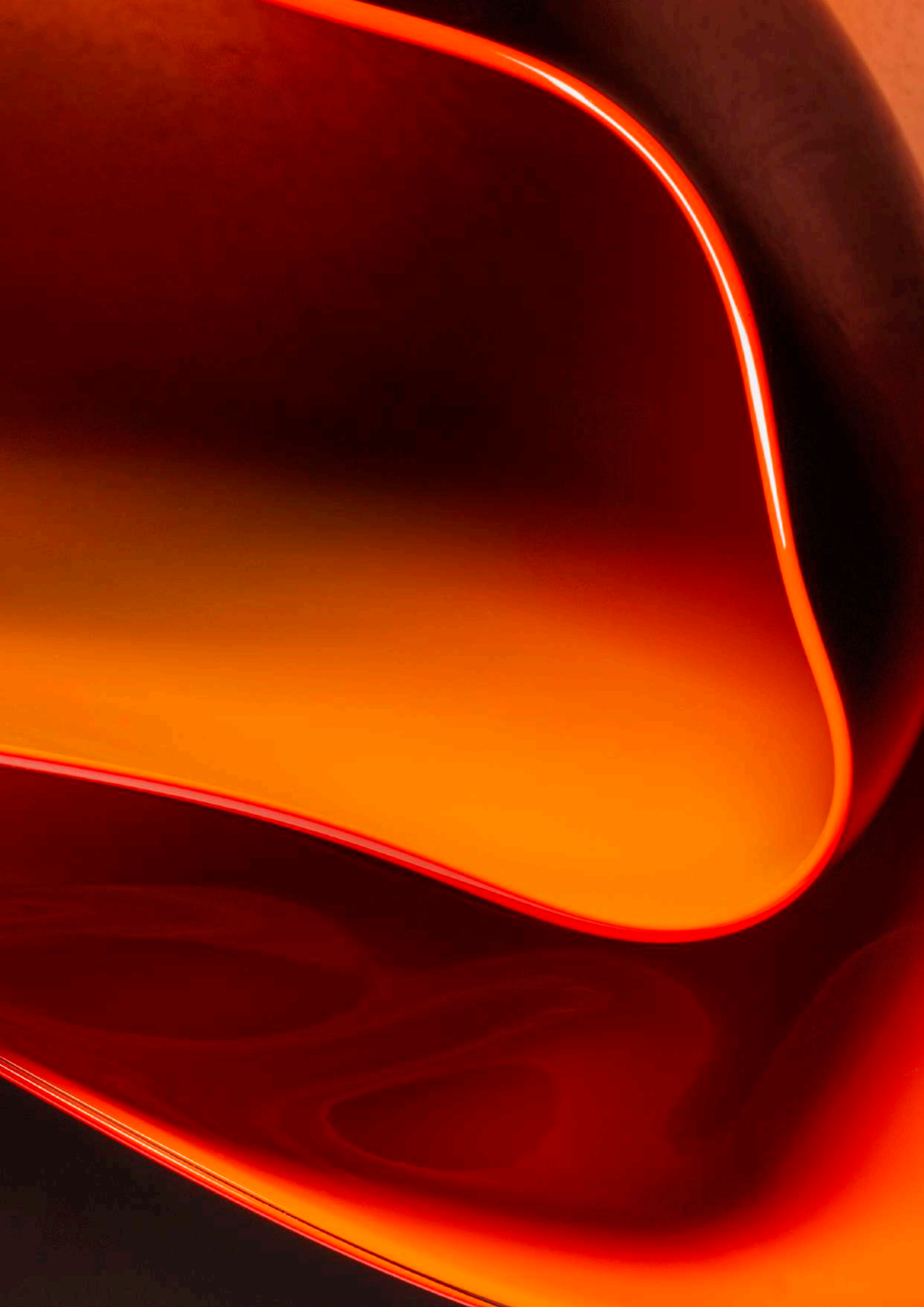
*Black Basket Set with  
Cerise Lip Wraps, 2008*  
Blown glass  
30 x 95 x 70 cm







*Black Basket Set with  
Cadmium Orange Lip Wraps, 2008*  
Blown glass  
45 x 100 x 65 cm





*Black Basket Set with  
Olive Lip Wraps, 2008*  
Blown glass  
40 x 102.5 x 90 cm







*Fire Orange Basket Set, 2013*  
Blown glass  
55 x 60 x 52.5 cm



*Cadet Blue Basket Set  
with Black Lip Wraps, 2000*  
Blown glass  
62.5 x 62.5 x 55 cm





*Misty Citron Basket Set  
with Ebony Lip Wraps, 2015*  
Blown glass  
42.5 x 47.5 x 40 cm





*Fire Yellow Basket Set  
with Oxblood Lip Wraps, 2013*  
Blown glass  
62.5 x 57.5 x 57.5 cm





*Phantom Red Basket Set  
with Ombre Lip Wraps, 2002*  
Blown glass  
45 x 52.5 x 47.5 cm



*Golden Celadon Basket*  
*Set with Drawing Shards, 2017*  
Blown glass  
30 x 75 x 57.5 cm



*Iris Amber Basket Set  
with Drawing Shard, 2017*  
Blown glass  
32.5 x 75 x 40 cm







*Garnet Flame Basket Set, 2018*  
Blown glass  
35 x 57.5 x 52.5 cm





*Garnet Flame Basket Set, 2018*  
Blown glass  
30 x 70 x 57.5 cm









*Golden Celadon Basket*  
*Set with Drawing Shard, 2018*  
Blown glass  
47.5 x 47.5 x 40 cm







# Persians



*Orchid and King's Blue Persian Set, 2006*  
Blown glass, 40 x 87.5 x 75 cm

First exhibited in 1986 as part of his exhibition at the Musée des Arts Decoratifs, Palais du Louvre in Paris, Chihuly's *Persian* series is a celebration of form, scale, and color. Originally presented on pedestals, the series' dramatic compositions have evolved to include installations mounted on walls, overhead on ceilings, and assembled in the form of chandeliers and towers. The use of ribbed optic molds is essential to the aesthetic of *Persians*. Molten glass, ringed by linear wraps, is plunged

into these molds to create repetitive patterns. When blown out, the bubbles are transformed into swirling, irregularly shaped rondels with fascinating detail.

"The *Persians* started out as a search for new forms. We worked for a year on experimental *Persians*....we made at least a thousand or more."—Chihuly



*Sienna Gold Leaf Persian*  
*Set with Cardinal Red Lip Wraps, 2015*  
Blown glass  
37.5 x 60 x 52.5 cm



*Golden Yellow Persian*  
*Set with Red Lip Wraps, 2001*  
Blown glass  
27.5 x 50 x 47.5 cm





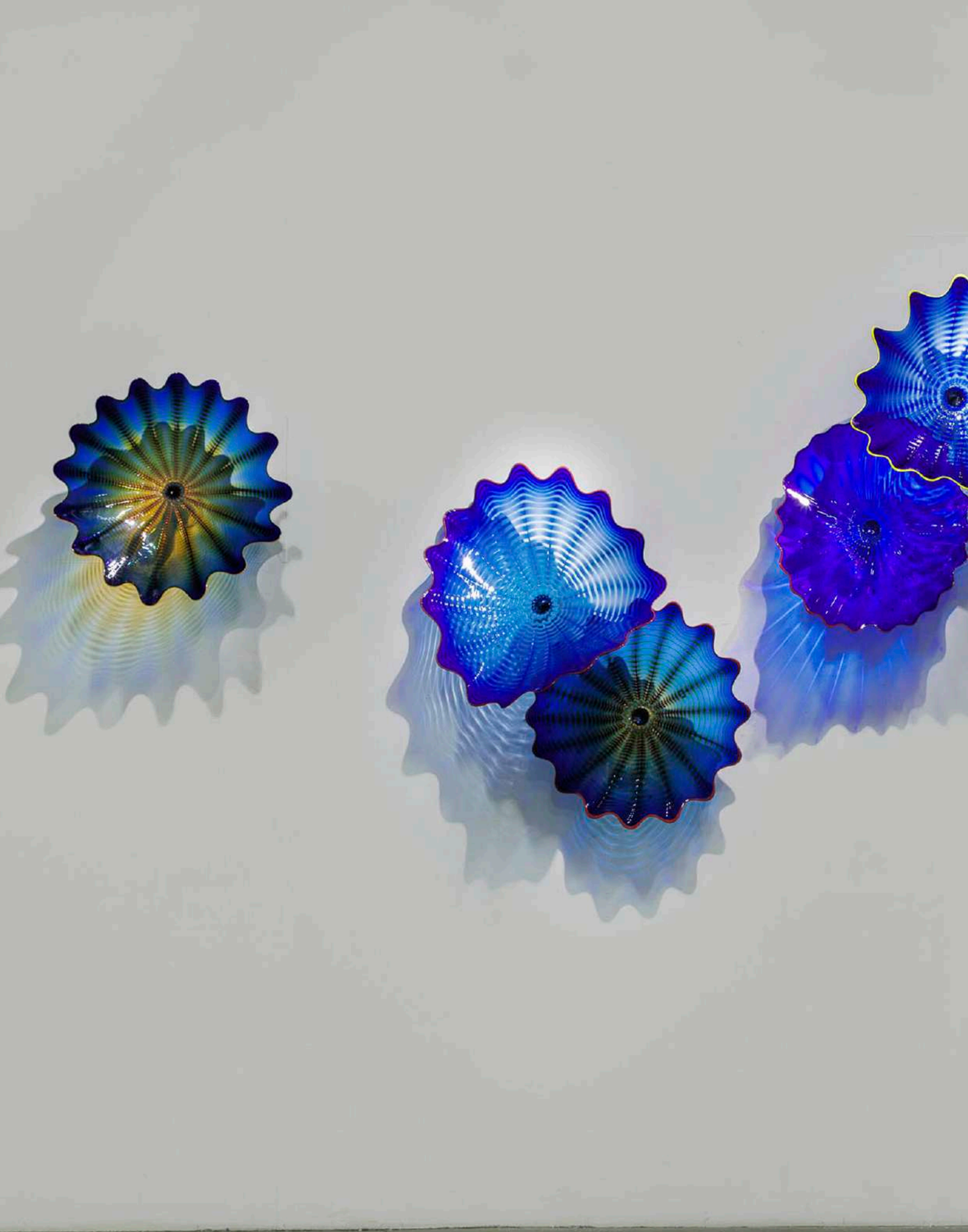




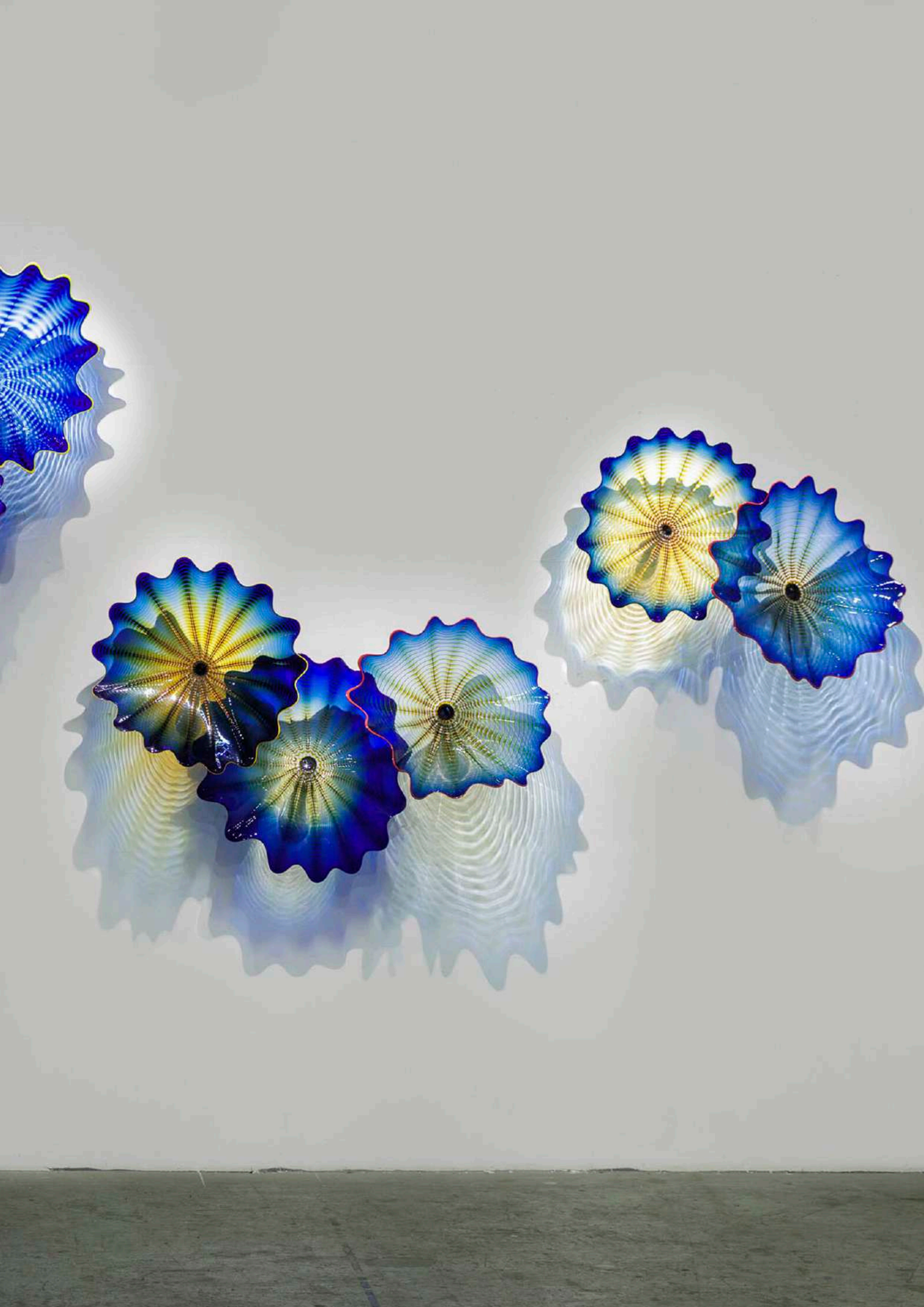
*Celadon Umber Persian Wall*, 2018, Blown glass, 137.5 x 352.5 x 45 cm







*Royal Blue and Amber Persian Wall, 2023, Blown glass and steel, 235 x 667.5 x 40 cm*







*Napoleon Blue Persian Set  
with Scarlet Lip Wraps, 2016*  
Blown glass  
25 x 52.5 x 40 cm





# Seaforms



*Deep Yellow and Scarlet Seaform Set, 2000*  
Blown glass, 27.5 x 52.5 x 92.5 cm

The *Basket* series evolved into *Seaforms* in 1980. More delicate, thin-walled, made of subtler blues, pinks, grays, and featuring thin applications of color—known as “body wrap”—this series emphasizes their undulating form, often conjuring images of underwater life, while not imitating it. Like the *Baskets*, they are often grouped together in nested sets.

of the ribbed optical molds which added strength, allowing us to blow even thinner. By about 1981, the key word for the team was “spontaneity,” and it seemed like we had pushed the glassblowing process to its limits.” —Chihuly

“With *Baskets* or *Seaforms*, my concern was with the form and developing ways to work with fire, gravity, and centrifugal force—to stretch and blow the glass to its edge. With the *Seaforms* came the use

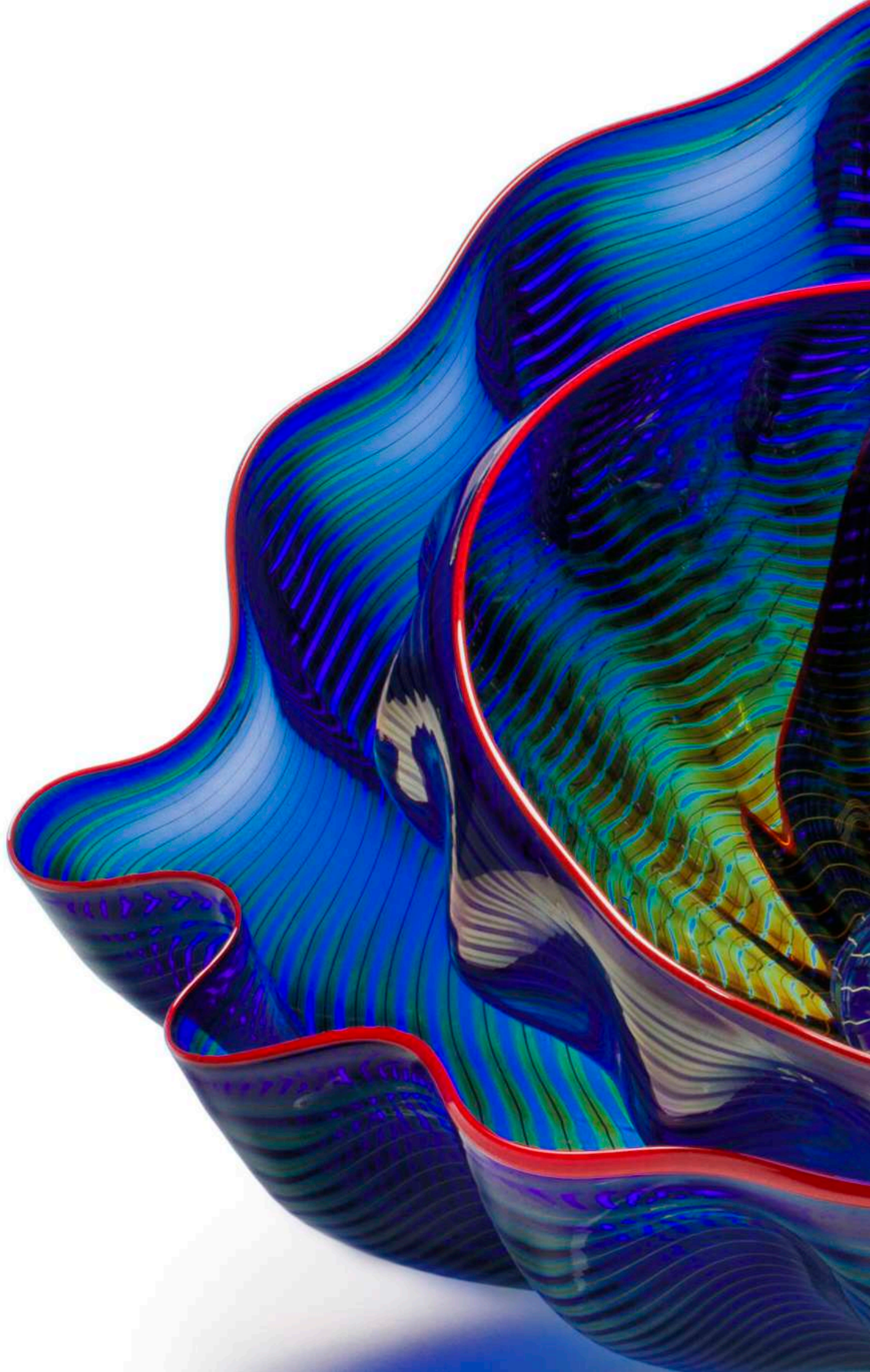








*Opera Blue Seaform Set*  
*with Turkish Red Lip Wraps, 1999*  
Blown glass  
30 x 62.5 x 40 cm





# Soft Cylinders



*Mint Green White Soft Cylinder with Cherry Lip Wrap, 2012*  
Blown glass, 50 x 47.5 x 37.5 cm

Chihuly began the *Soft Cylinders* series in 1984, combining the “pick-up drawing” technique used in earlier *Cylinders* with the softer, sagging forms of *Baskets* and *Seaforms*, and the bright contrasting colors of *Macchia*.

after the last gather of glass has been dipped from the furnace, the gaffer comes down on the drawing with the molten glass and fuses it to the surface. This is the most exciting moment of making a *Soft Cylinder*.”—Chihuly

“Halfway into the blowing process, right





*Wild Aster Soft Cylinder with  
Pale Green Lip Wrap, 2014*  
Blown glass  
45 x 42.5 x 40 cm



*Aqua Soft Cylinder with  
Carmin Lip Wrap, 2014*  
Blown glass  
137.5 x 125 x 112.5 cm





*Sienna Yellow Soft Cylinder  
with Ruby Lip Wrap, 2014*  
Blown glass  
42.5 x 42.5 x 37.5 cm



# Towers

Chihuly's initial phase of extensive experimentation with *Chandeliers* culminated in the *Chihuly Over Venice* project (1995-96). Subsequent projects continued to challenge the artist to create large sculptures for spaces without ceilings or where the ceilings could not bear the weight of *Chandeliers*, giving life to the development of the *Tower series*.

*Peridot Green Icicle Tower*, 2023  
Blown glass and steel  
407.5 x 185 x 175 cm





# Drawings

## Works on Paper

What began for Chihuly as a means of expressing his ideas to the glassblowing team, evolved into a unique body of work that references the development of his glass series. *Drawings* vary from light and airy to bold and colorful. Chihuly works with a variety of media including acrylic, watercolor, charcoal, graphite—even fire—to create his expressive two-dimensional artworks.

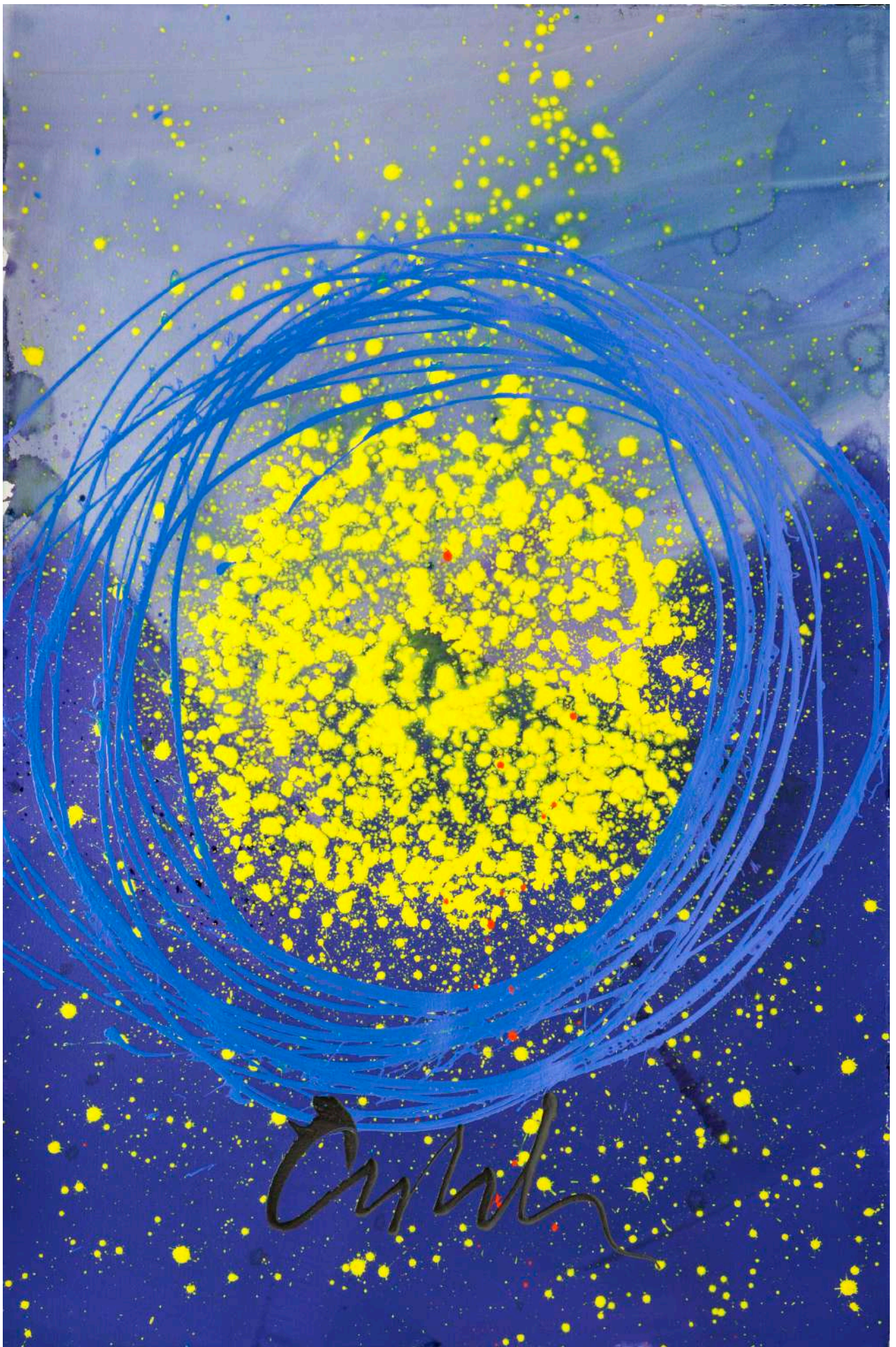
Drawing has been a natural part of Chihuly's vocabulary since his days as an interior design student at University of Washington, where he was trained to make meticulous pencil-and-

wash renderings. He often draws while standing, as the practice enables a more free and physical expression of ideas.

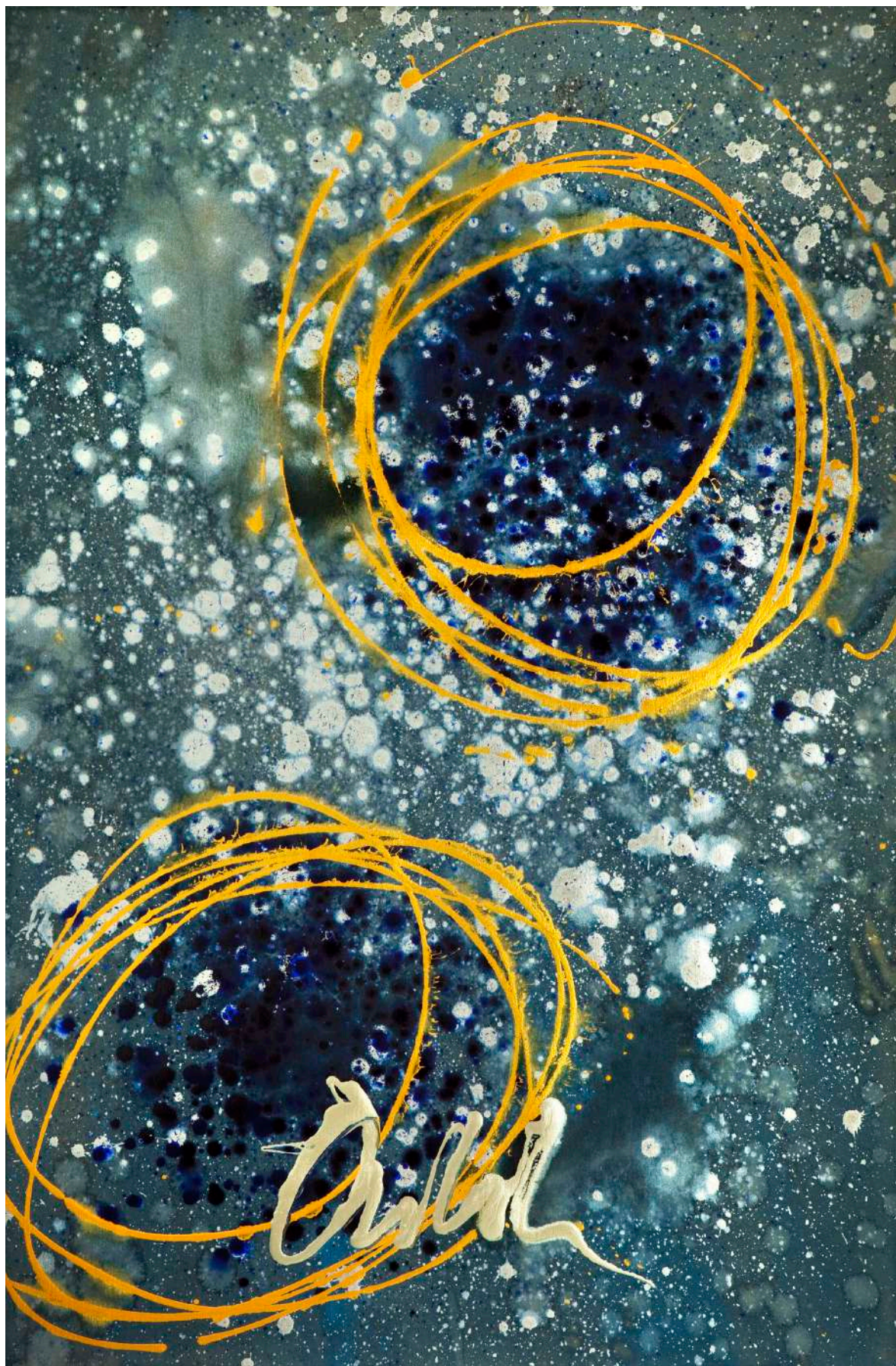
For exhibitions, Chihuly often installs *Drawings* side-by-side in large grids so the colors, forms, and textures in the individual artworks are composed in concert with each other.

"Most of the drawings are quite spontaneous. I don't do much with preconceived ideas. In the course of a day of blowing glass, I might do 15 or 20 drawings."—Chihuly

*Float Drawing*, 2014  
Acrylic on paper  
150 x 100 cm

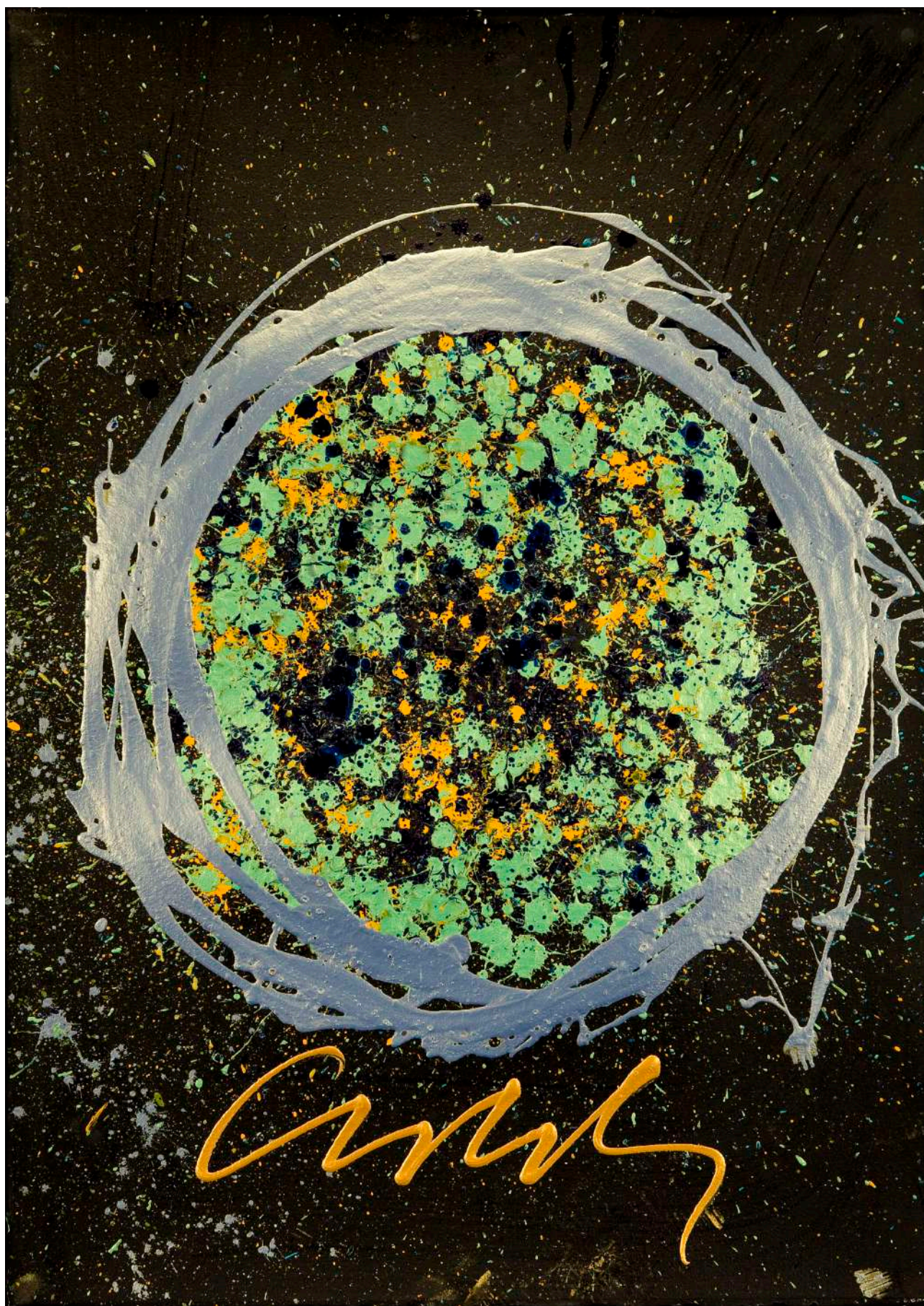






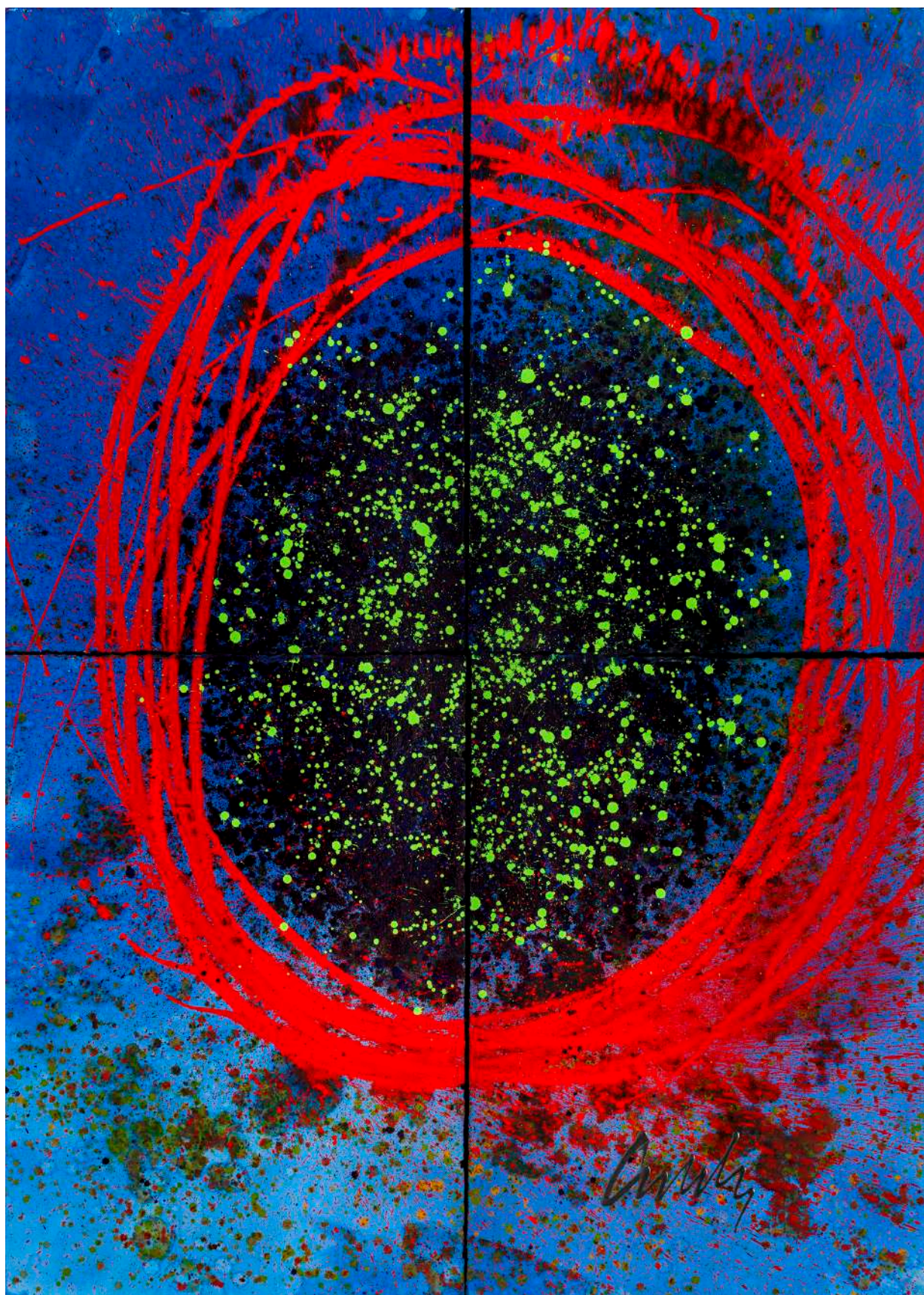
*Float Drawing, 2013*  
Acrylic on paper  
150 x 100 cm





*Float Drawing, 2008*  
Acrylic on paper  
105 x 75 cm





*Float Quad Drawing, 2015*  
Acrylic on paper  
210 x 150 cm





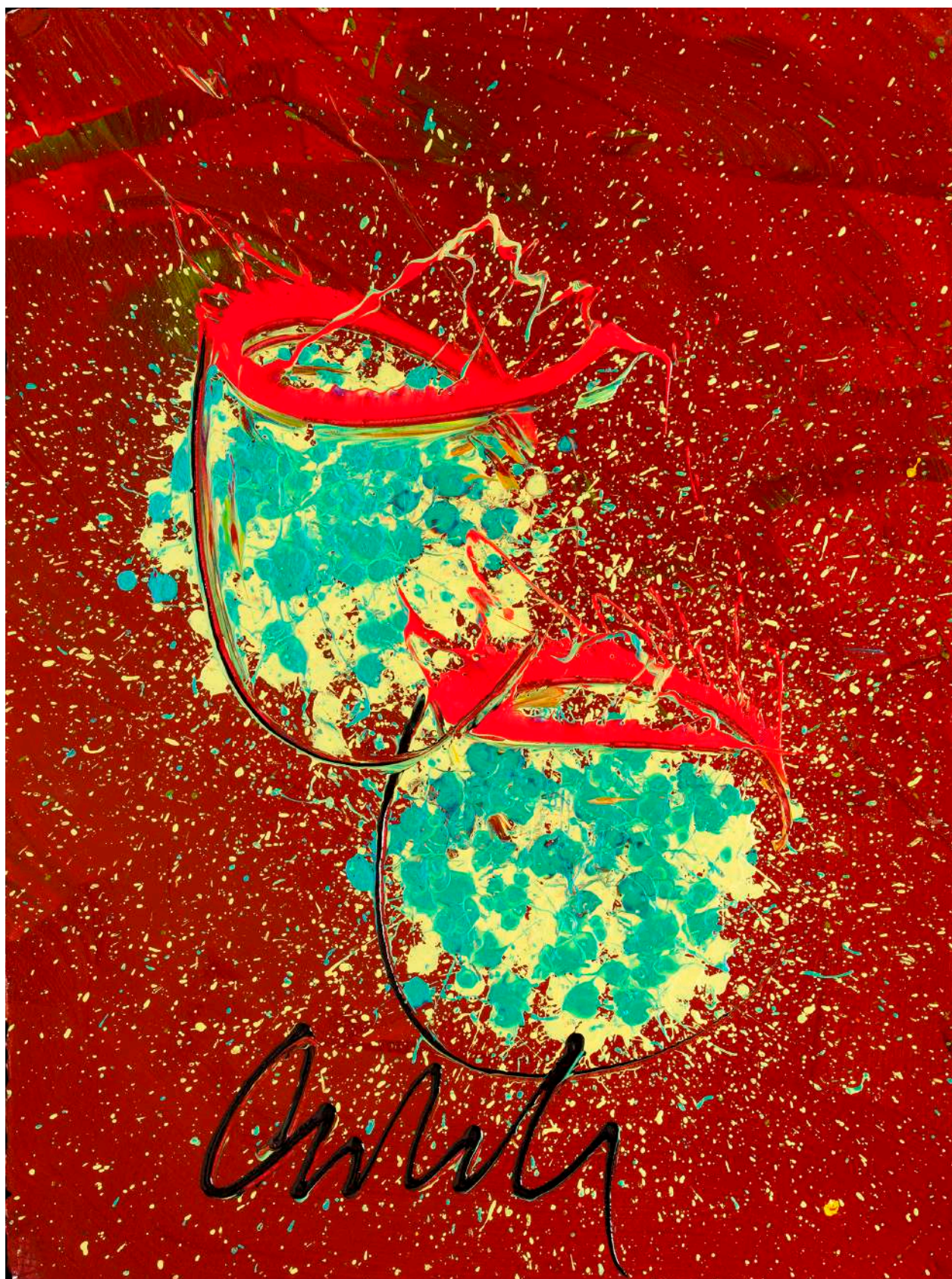
*Basket Drawing, 2012*  
Acrylic on paper  
75 x 55 cm





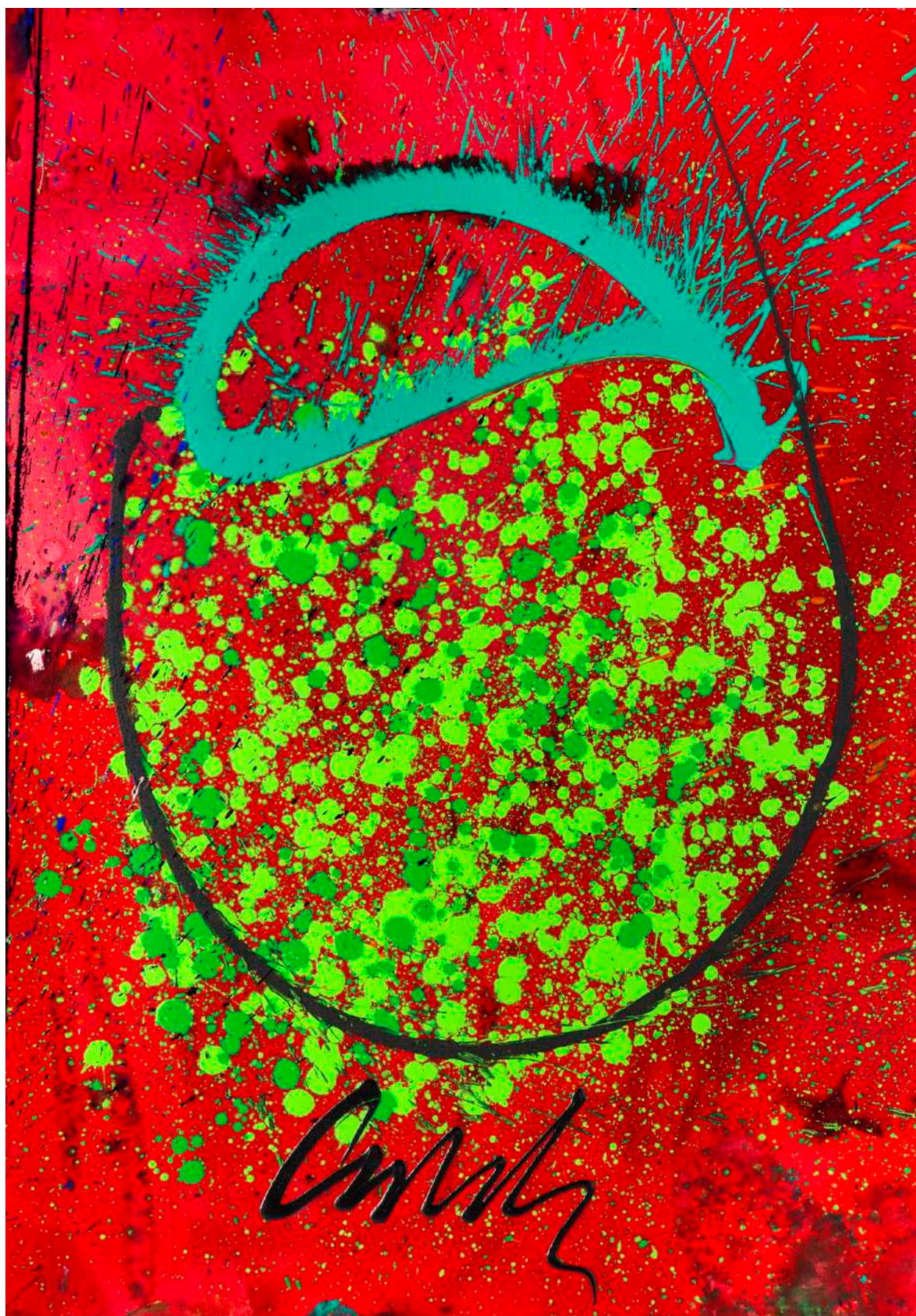
*Basket Drawing*, 2014  
Acrylic on paper  
105 x 75 cm





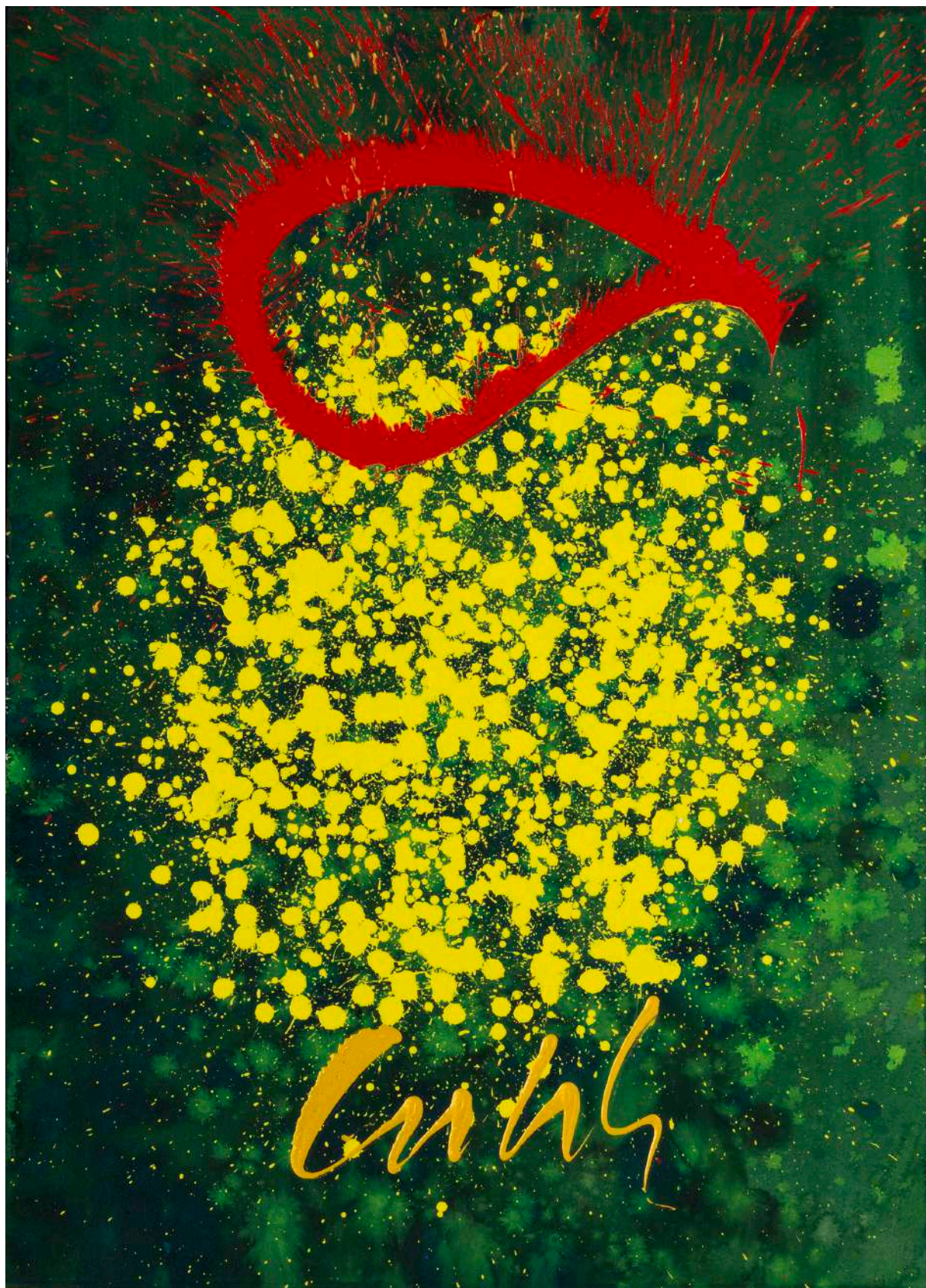
*Basket Drawing*, 2013  
Acrylic on paper  
75 x 55 cm





*Basket Drawing, 2015*  
Acrylic on paper  
105 x 75 cm





*Basket Drawing, 2015*  
Acrylic on paper  
105 x 75 cm





*Burned Black Ikebana*  
Drawing, 2007  
Acrylic on paper  
75 x 55 cm





*Lemon and Sapphire*  
*Ikebana Drawing, 2008*  
Acrylic on paper  
75 x 55 cm



# Light Drawings

While traveling through Europe as a young man, Chihuly marveled at the beauty of stained-glass windows and the power that glass and light give to share.

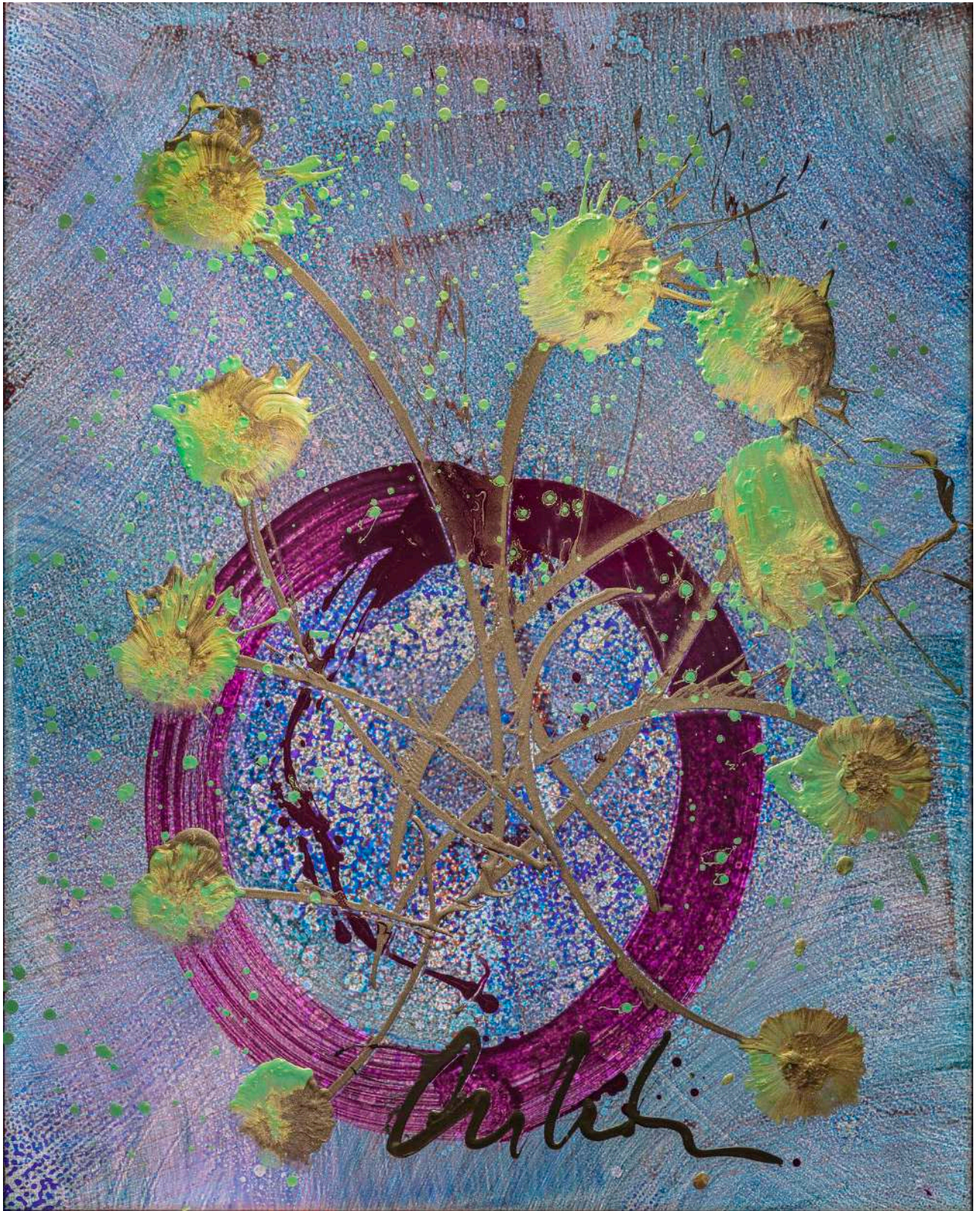
Composed of vibrant colors painted on clear acrylic panels and intensified by interior illumination, *Light Drawings* are an expression of Chihuly's interest in the transmission of

light through transparent media.

"Can a work be too colorful? I don't know if something can be too colorful."—Chihuly

*Ikebana Light Drawing*, 2019  
Drawing on acrylic  
125 x 100 cm









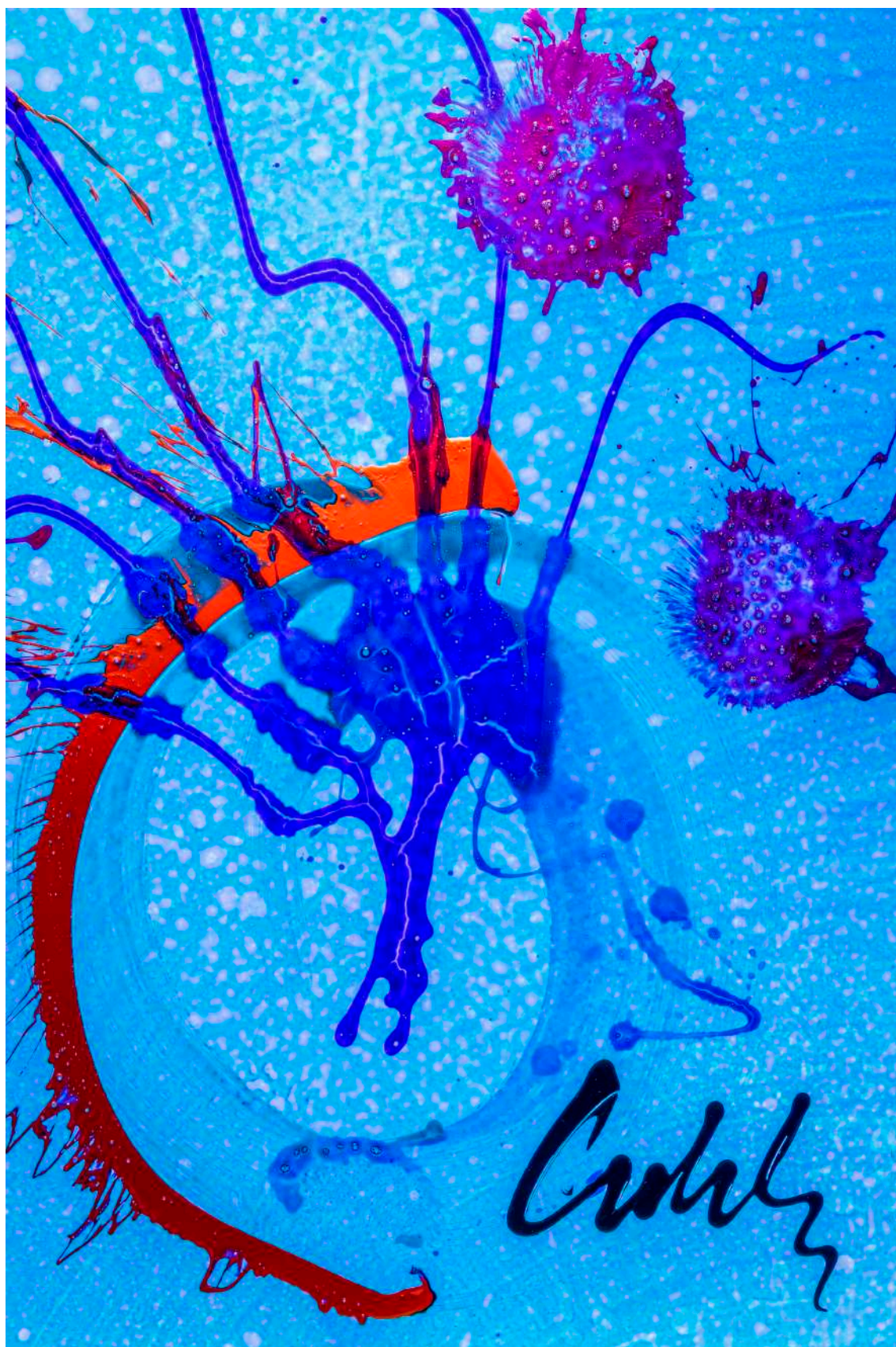
*Ikebana Light Drawing, 2019*  
Drawing on acrylic  
125 x 100 cm





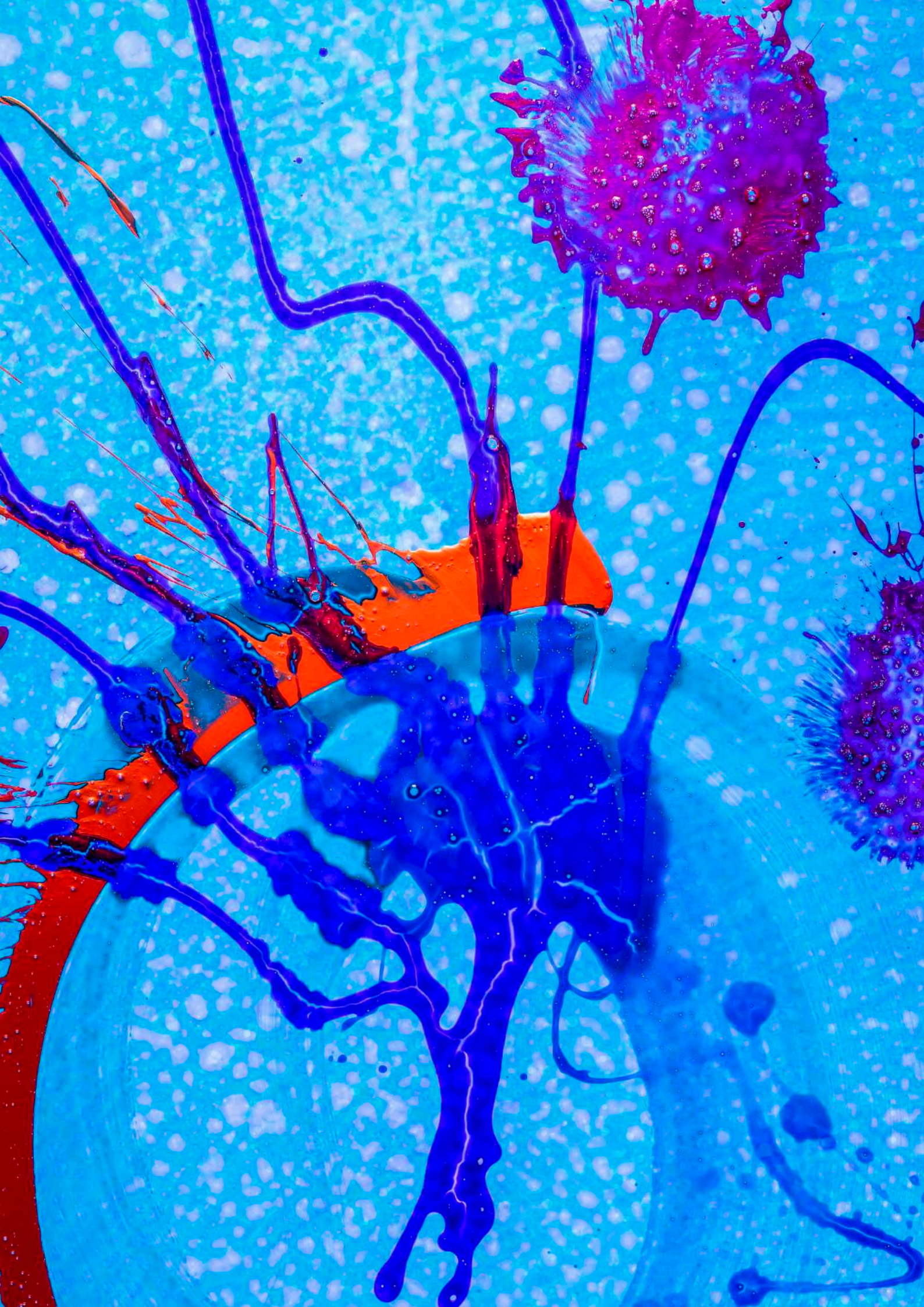
*Ikebana Light Drawing, 2019*  
Drawing on acrylic  
105 x 80 cm





*Ikebana Light Drawing, 2017*  
Drawing on acrylic  
125 x 100 cm









## **Biography**

### Chihuly

Born in 1941 in Tacoma, Washington, Dale Chihuly was introduced to glass while studying interior design at the University of Washington. After graduating in 1965, Chihuly enrolled in the first glass program in the country, at the University of Wisconsin. He continued his studies at the Rhode Island School of Design (RISD), where he later established the glass program and taught for more than a decade.

In 1968, after receiving a Fulbright Fellowship, he went to work at the Venini glass factory in Venice. There he observed the team approach to blowing glass, which is critical to the way he works today. In 1971, Chihuly cofounded Pilchuck Glass School in Washington State. With this international glass center, Chihuly has led the avant-garde in the development of glass as a fine art.

His work is included in more than 200 museum collections worldwide. He has been the recipient of many awards, including two fellowships from the National Endowment for the Arts and thirteen honorary doctorates.

Chihuly has created more than a dozen well-known series of works, among them *Cylinders* and *Baskets* in the 1970s; *Seaforms*, *Macchia*, *Persians*, and *Venetians* in the 1980s; *Niijima Floats* and *Chandeliers* in the 1990s; and *Fiori*, *Glass on Glass*, and *Rotolo* in the 2000s. He is also celebrated for large architectural installations. In 1986, he was honored with a solo exhibition, *Dale Chihuly: Objets de Verre*, at the Musée des Arts Décoratifs, Palais du Louvre, in Paris. In 1995, he began *Chihuly Over Venice*, for which he created sculptures at glass factories in Finland, Ireland, and Mexico, then installed them over the canals and piazzas of Venice.

In 1999, Chihuly started an ambitious exhibition, *Chihuly in the Light of Jerusalem*; more than 1 million visitors attended the Tower of David Museum to view his installations. In 2001, the Victoria and Albert Museum in London curated the exhibition *Chihuly at the V&A*. His lifelong fascination for glasshouses has grown into a series of exhibitions within botanical settings. The *Garden Cycle* began in 2001 at the Garfield Park Conservatory, Chicago, and continued at

several locations, among them the Royal Botanic Gardens, Kew, in London, in 2005 and 2019; the New York Botanical Garden, Bronx, in 2006 and 2017; and Gardens by the Bay, Singapore, in 2021.

Chihuly has shown his work in solo exhibitions at museums including the de Young Museum, San Francisco, in 2008; Museum of Fine Arts, Boston, in 2011; Virginia Museum of Fine Arts, Richmond, in 2012; Montreal Museum of Fine Arts, in 2013; Royal Ontario Museum, Toronto, in 2016; Crystal Bridges Museum of American Art, Bentonville, Arkansas, in 2017; Groninger Museum, Groningen, the Netherlands, in 2018; and Artis—Naples, The Baker Museum, Naples, Florida, in 2020. *Chihuly Garden and Glass*, a major long-term exhibition, opened in Seattle in 2012.



## Exhibitions

- 1967 *Dale Chihuly*  
University of Wisconsin, Madison, Wisconsin
- 1971 *Glass Environment: Dale Chihuly & James Carpenter*  
Museum of Contemporary Crafts, New York, New York
- 1975 *Dale Chihuly: Indian Blanket Cylinders*  
Utah Museum of Fine Arts, University of Utah, Salt Lake City, Utah  
Institute of American Indian Arts Museum, Santa Fe, New Mexico
- 1976 *Dale Chihuly: Glass Cylinders*  
Wadsworth Atheneum, Hartford, Connecticut  
Bell Gallery, Brown University, Providence, Rhode Island
- Dale Chihuly: Indian Blanket Cylinders*  
Leigh Yawkey Woodson Art Museum, Wausau, Wisconsin
- 1977 *Dale Chihuly: Glass Cylinders*  
Yaw Gallery, Birmingham, Michigan
- 1978 *Baskets and Cylinders: Recent Glass by Dale Chihuly*  
Renwick Gallery, National Collection of Fine Arts, Smithsonian Institution, Washington, D.C.
- 1979 *Dale Chihuly/VIDRO*  
Museu de Arte de São Paulo, São Paulo, Brazil
- 1980 *Dale Chihuly: An American Glass Artist*  
Eretz Israel Museum, Tel Aviv, Israel
- Dale Chihuly: Recent Works*  
Fine Arts Center Galleries, University of Rhode Island, Kingston, Rhode Island
- 1981 *Dale Chihuly: Glass*  
Tacoma Art Museum, Tacoma, Washington
- 1982 *Dale Chihuly: Glass*  
Phoenix Art Museum, Phoenix, Arizona
- Dale Chihuly: Recent Works in Glass*  
Tucson Museum of Art, Tucson, Arizona  
San Diego Museum of Art, San Diego, California
- 1983 *Dale Chihuly: Recent Works in Glass*  
Saint Louis Art Museum, St. Louis, Missouri  
Palm Springs Desert Museum, Palm Springs, California

- 1984 *Chihuly: A Decade of Glass*  
Bellevue Art Museum, Bellevue, Washington  
Modern Art Museum of Fort Worth, Fort Worth, Texas
- Dale Chihuly: Recent Works in Glass*  
Crocker Art Museum, Sacramento, California
- 1985 *Chihuly: A Decade of Glass*  
Arkansas Arts Center, Little Rock, Arkansas  
Madison Art Center, Madison, Wisconsin  
Palmer Museum of Art, Pennsylvania State University, University Park, Pennsylvania  
University Galleries, Illinois State University, Normal, Illinois
- 1986 *Chihuly: A Decade of Glass*  
Brunnner Art Museum, Iowa State University, Ames, Iowa  
Chicago Cultural Center, Chicago, Illinois  
Mint Museum of Art, Charlotte, North Carolina  
Muskegon Museum of Art, Muskegon, Michigan  
Musée des Arts Décoratifs de Montréal, Montreal, Quebec, Canada
- Dale Chihuly: Objets de Verre*  
Musée des Arts Décoratifs, Palais du Louvre, Paris, France
- 1987 *Chihuly: A Decade of Glass*  
Fred Jones Jr. Museum of Art, University of Oklahoma, Norman, Oklahoma  
Art Museum of Western Virginia, Roanoke, Virginia
- Dale Chihuly: Objets de Verre*  
Musée Matisse, Le Cateau–Cambrésis, France
- 1988 *Chihuly: Persians*  
DIA Art Foundation, Bridgehampton, New York
- Dale Chihuly: Objets de Verre*  
Fundação Calouste Gulbenkian, Lisbon, Portugal  
Musée d'Unterlinden, Colmar, France
- 1989 *Chihuly: Persians*  
Society for Art in Crafts, Pittsburgh, Pennsylvania
- Dale Chihuly: Persians and New Work*  
Kalamazoo Institute of Arts, Kalamazoo, Michigan
- 20ª Bienal Internacional de São Paulo*  
São Paulo, Brazil
- 1990 *Chihuly: Glass Master*  
Museo Nacional de Bellas Artes, Santiago, Chile



*Dale Chihuly: Japan 1990*  
Azabu Museum of Arts and Crafts, Tokyo, Japan

*Dale Chihuly: Persians*  
Hudson River Museum of Westchester, Yonkers, New York

- 1991 *Chihuly: Venetians*  
Uměleckoprůmyslové Muzeum, Prague, Czechoslovakia  
Röhsska Konsthögmuseet, Göteborg, Sweden

*Dale Chihuly / Klaus Moje*  
Glasmuseet Ebeltoft, Ebeltoft, Denmark

*Chihuly: Works on Paper*  
Tacoma Art Museum, Tacoma, Washington

- 1992 *Chihuly Courtyards*  
Honolulu Academy of Arts, Honolulu, Hawaii

*Dale Chihuly: Glass*  
Taipei Fine Arts Museum, Taipei, Taiwan

*Dale Chihuly: Installations 1964–1992*  
Seattle Art Museum, Seattle, Washington  
Contemporary Arts Center, Cincinnati, Ohio

*Dale Chihuly: Venetians*  
Museum für Kunst und Gewerbe Hamburg, Hamburg, Germany  
Nationaal Glasmuseum, Leerdam, Netherlands  
Museum voor Moderne Kunst, Oostende, Belgium

*Dale Chihuly*  
Toledo Museum of Art, Toledo, Ohio

*Nijima Floats*  
American Craft Museum, New York, New York

- 1993 *Chihuly alla Macchia*  
Art Museum of Southeast Texas, Beaumont, Texas

*Chihuly in Australia: Glass and Works on Paper*  
Powerhouse Museum, Sydney, Australia  
National Gallery of Victoria, Melbourne, Australia  
Scitech Discovery Centre, Perth, Australia

*Chihuly: Form from Fire*  
Lowe Art Museum, University of Miami, Coral Gables, Florida  
Tampa Museum of Art, Tampa, Florida  
Museum of Arts and Sciences, Daytona Beach, Florida

*Dale Chihuly: Installations*  
Detroit Institute of Arts, Detroit, Michigan

*Dale Chihuly: Virtuose Spiele in Glas*  
Altes Zeughaus Landenberg, Sarnen, Switzerland  
Historiches Museum, Sarnen, Switzerland

1994 *Chihuly alla Macchia*  
Austin Museum of Art–Laguna Gloria, Austin, Texas

*Chihuly Baskets*  
North Central Washington Museum, Wenatchee, Washington  
Port Angeles Fine Arts Center, Port Angeles, Washington

*Chihuly: Form from Fire*  
Philharmonic Center for the Arts, Naples, Florida  
Samuel P. Harn Museum of Art, University of Florida, Gainesville, Florida  
Museum of Fine Arts, Florida State University, Tallahassee, Florida  
Center for the Arts, Vero Beach, Florida

*Chihuly: Glass in Architecture*  
Kaohsiung Museum of Fine Arts, Kaohsiung, Taiwan

*Dale Chihuly: Installations*  
Dallas Museum of Art, Dallas, Texas  
Santa Barbara Museum of Art, Santa Barbara, California

*Chihuly in New Zealand: Glass and Works on Paper*  
Dowse Art Museum, Lower Hutt, New Zealand  
Waikato Museum of Art and History, Hamilton, New Zealand  
Otago Museum, Dunedin, New Zealand  
Robert McDougall Art Gallery, Christchurch, New Zealand  
Manawatu Museum, Palmerston North, New Zealand

*Dale Chihuly: Pelléas and Mélisande*  
Renwick Gallery, National Museum of American Art, Smithsonian Institution, Washington, D.C.

*Dale Chihuly: New York Installations*  
Brooklyn Museum, Brooklyn, New York

1995 *Chihuly alla Macchia*  
Polk Museum of Art, Lakeland, Florida  
Grace Museum, Abilene, Texas

*Chihuly Baskets*  
Washington State Historical Society Museum, Tacoma, Washington  
Maryhill Museum of Art, Goldendale, Washington  
Sheehan Gallery, Whitman College, Walla Walla, Washington



*Chihuly: Form from Fire*

St. John's Museum of Art, Wilmington, North Carolina

*Chihuly in New Zealand: Glass and Works on Paper*

Hawke's Bay Exhibition Centre, Hastings, New Zealand

Auckland Museum, Auckland, New Zealand

*Dale Chihuly*

Jundt Art Museum, Gonzaga University, Spokane, Washington

*Dale Chihuly: Installations*

Anchorage Museum of History and Art, Anchorage, Alaska

San Jose Museum of Art, San Jose, California

*Dale Chihuly: On Site*

Jacksonville Museum of Contemporary Art, Jacksonville, Florida

*Chihuly Exhibition*

National Botanic Gardens, Glasnevin, Dublin, Ireland

1996 *Alaska Baskets*

Alutiiq Museum and Archaeological Repository, Kodiak, Alaska

Sheldon Jackson Museum, Sitka, Alaska

Sheldon Museum and Cultural Center, Haines, Alaska

*Chihuly alla Macchia*

Brevard Museum of Art and Science, Melbourne, Florida

Leigh Yawkey Woodson Art Museum, Wausau, Wisconsin

*Chihuly Baskets*

Art Museum of Missoula, Missoula, Montana

Schneider Museum of Art, Southern Oregon State College, Ashland, Oregon

University of Wyoming Art Museum, Laramie, Wyoming

Scottsdale Center for the Arts, Scottsdale, Arizona

*Chihuly Over Venice*

Venice, Italy

Kemper Museum of Contemporary Art, Kansas City, Missouri

*Chihuly: Seaforms*

Corcoran Gallery of Art, Washington, D.C.

Museum of Art, Williams College, Williamstown, Massachusetts

Portland Museum of Art, Portland, Maine

*Crystal Gardens*

LongHouse Foundation, East Hampton, New York

*Dale Chihuly: Installations*

Contemporary Arts Center, New Orleans, Louisiana

Baltimore Museum of Art, Baltimore, Maryland  
Saint Louis Art Museum, St. Louis, Missouri

*Dale Chihuly: On Site*

Palm Springs Desert Museum, Palm Springs, California

1997 *Alaska Baskets*

Carrie M. McLain Memorial Museum, Nome, Alaska  
Pratt Museum, Homer, Alaska  
Valdez Museum and Historical Archive, Valdez, Alaska  
Tongass Historical Museum, Ketchikan, Alaska

*Chihuly Baskets*

Allied Arts Association, Richland, Washington  
Prichard Art Gallery, University of Idaho, Moscow, Idaho

*Portes Ouvertes*

La Verrerie de Vianne, Vianne, France

*Dale Chihuly: The George R. Stroemple Collection*

Portland Art Museum, Portland, Oregon

*Chihuly Over Venice*

Corcoran Gallery of Art, Washington, D.C.  
Portland Art Museum, Portland, Oregon

*Chihuly: Seaforms*

Middlebury College Museum of Art, Middlebury, Vermont  
Everson Museum of Art, Syracuse, New York  
Heckscher Museum of Art, Huntington, New York

*Dale Chihuly: Installations*

Minneapolis Institute of Arts, Minneapolis, Minnesota  
Dixon Gallery and Gardens, Memphis, Tennessee  
Albright-Knox Art Gallery, Buffalo, New York

*Four Acts in Glass: Installations by Chihuly, Morris, Powers and Vallien*

American Craft Museum, New York, New York

*The Magic of Chihuly Glass*

Kobe City Museum, Kobe, Japan  
Suntory Museum of Art, Tokyo, Japan

1998 *Alaska Baskets*

Skagway Museum and Archives, Skagway, Alaska

*Chihuly Exhibition*

Bemis Center for Contemporary Arts, Omaha, Nebraska



*Chihuly Baskets*

West Sound Arts Council, Bremerton, Washington  
Alaska State Museum, Juneau, Alaska

*Chihuly Over Venice*

Columbus Museum of Art, Columbus, Ohio

*Chihuly: Seaforms*

Memorial Art Gallery, University of Rochester, Rochester, New York  
New Britain Museum of American Art, New Britain, Connecticut  
Ball State University Museum of Art, Muncie, Indiana

*Dale Chihuly: Installations*

Norton Museum of Art, West Palm Beach, Florida

*Dale Chihuly: On Site*

Albuquerque Museum of Art and History, Albuquerque, New Mexico

*The Magic of Chihuly Glass*

Fukuoka Art Museum, Fukuoka, Japan

*Montana Macchia*

Holter Museum of Art, Helena, Montana  
Paris Gibson Square Museum of Art, Great Falls, Montana  
Hockaday Center for the Arts, Kalispell, Montana  
Custer County Art Center, Miles City, Montana

*Dale Chihuly*

University Art Gallery, University of California–San Diego, La Jolla, California

*Dale Chihuly: The George R. Stroemple Collection*

Akron Art Museum, Akron, Ohio

*Dale Chihuly: Venetians*

Providence Athenaeum, Providence, Rhode Island

1999 *Chihuly in the Light of Jerusalem 2000*

Tower of David Museum of the History of Jerusalem, Jerusalem, Israel

*Chihuly Baskets*

Delaware Art Museum, Wilmington, Delaware  
Plains Art Museum, Fargo, North Dakota

*Chihuly: Glass Master*

Hsinchu Municipal Cultural Center, Hsinchu, Taiwan

*Chihuly: Macchia*

Northwest Arts Center, Minot State University, Minot, North Dakota

North Dakota Museum of Art, Grand Forks, North Dakota  
Rourke Art Gallery, Moorhead, Minnesota

*Chihuly: Seaforms*

Palmer Museum of Art, Pennsylvania State University, University Park, Pennsylvania  
Indianapolis Museum of Art, Columbus Gallery, Columbus, Indiana

*Dale Chihuly: Installations*

Hiroshima City Museum of Contemporary Art, Hiroshima, Japan  
Contemporary Art Center of Virginia, Virginia Beach, Virginia  
Mint Museum of Craft + Design, Charlotte, North Carolina

*Dale Chihuly: Masterworks in Glass*

National Gallery of Australia, Canberra, Australia

*Dale Chihuly: The George R. Stroemple Collection*

California Center for the Arts, Escondido, California

2000 *Chihuly Baskets*

Braithwaite Fine Arts Gallery, Southern Utah University, Cedar City, Utah  
Brigham Young University Museum of Art, Provo, Utah

*Chihuly: Inside and Out*

Joslyn Art Museum, Omaha, Nebraska

*Wrapped in Tradition: The Chihuly Collection of American Indian Trade Blankets*

American Textile History Museum, Lowell, Massachusetts

*Chihuly: Seaforms*

Fuller Museum of Art, Brockton, Massachusetts  
Fayetteville Museum of Art, Fayetteville, North Carolina

*Dale Chihuly: Installations*

Knoxville Museum of Art, Knoxville, Tennessee  
Arkansas Arts Center, Little Rock, Arkansas

*Chihuly in Iceland: Form from Fire*

Listasafn Reykjavíkur, Reykjavík, Iceland

*Reflections of Chihuly: A Naples Museum of Art Inaugural Exhibition*

Naples Museum of Art, Naples, Florida

*Dale Chihuly: On Site*

Nevada Museum of Art, Reno, Nevada

*Dale Chihuly: The George R. Stroemple Collection*

San Jose Museum of Art, San Jose, California



*Chihuly: Masterworks in Glass*

JamFactory Contemporary Craft and Design, Adelaide, Australia

2001 *Chihuly: Seaforms*

Bowers Museum of Cultural Art, Santa Ana, California

Springfield Museum of Fine Arts, Springfield, Massachusetts

Southern Vermont Arts Center, Manchester, Vermont

*Chihuly Baskets*

Crocker Art Museum, Sacramento, California

Loveland Museum of Art, Loveland, Colorado

Lauren Rogers Museum of Art, Laurel, Mississippi

Tyler Museum of Art, Tyler, Texas

*Chihuly at the V&A*

Victoria and Albert Museum, London, England

*Form from Fire: Glass Works by Dale Chihuly*

Dayton Art Institute, Dayton, Ohio

*Dale Chihuly: The George R. Stroemple Collection*

Las Vegas Art Museum, Las Vegas, Nevada

Boise Art Museum, Boise, Idaho

*Chihuly Over Venice*

Milwaukee Art Museum, Milwaukee, Wisconsin

*Chihuly in the Park: A Garden of Glass*

Garfield Park Conservatory, Chicago, Illinois

*Wrapped in Tradition: The Chihuly Collection of American Indian Trade Blankets*

Oregon History Center, Portland, Oregon

2002 *Chihuly 2002: Salt Lake Olympic Winter Games*

Salt Lake Art Center, Salt Lake City, Utah

*Dale Chihuly: A Gift of Glass*

Galéria mesta Bratislavy, Bratislava, Slovakia

*Dale Chihuly: An Inaugural Exhibition*

Oklahoma City Museum of Art, Oklahoma City, Oklahoma

*Dale Chihuly: Installations*

Phoenix Art Museum, Phoenix, Arizona

*Dale Chihuly: The George R. Stroemple Collection*

Fort Wayne Museum of Art, Fort Wayne, Indiana

*Dale Chihuly: Works on Paper*

Monterey Museum of Art, Monterey, California

*Wrapped in Tradition: The Chihuly Collection of American Indian Trade Blankets*

Tamástslikt Cultural Institute, Pendleton, Oregon

Washington State History Museum, Tacoma, Washington

*Chihuly Baskets*

Art Museum of South Texas, Corpus Christi, Texas

Tyler Museum of Art, Tyler, Texas

*Chihuly at Vapriikki*

Museum Centre Vapriikki, Tampere, Finland

*Chihuly 2002*

Grounds for Sculpture, Hamilton, New Jersey

*Chihuly: Seaforms*

Pensacola Museum of Art, Pensacola, Florida

*Chihuly*

Marietta/Cobb Museum of Art, Marietta, Georgia

- 2003 *Color and Light: Chihuly at the Frederik Meijer Gardens & Sculpture Park*  
Frederik Meijer Gardens & Sculpture Park, Grand Rapids, Michigan

*Chihuly: Seaforms*

Mary Brogan Museum of Art and Science, Tallahassee, Florida

Southwest School of Art & Craft, San Antonio, Texas

*Fire and Ice: Dale Chihuly, Installation SA*

San Antonio Museum of Art, San Antonio, Texas

*Mille Fiori*

Tacoma Art Museum, Tacoma, Washington

*Wrapped in Tradition: The Chihuly Collection of American Indian Trade Blankets*

Eiteljorg Museum, Indianapolis, Indiana

Hunter Museum of American Art, Chattanooga, Tennessee

*Chihuly at the Conservatory*

Franklin Park Conservatory, Columbus, Ohio

*Dale Chihuly: The George R. Stroemple Collection*

Lakeview Museum, Peoria, Illinois

- 2004 *Chihuly Across Florida: Masterworks in Glass at the Orlando Museum of Art and the Museum of Fine Arts, St. Petersburg*



Orlando Museum of Art, Orlando, Florida  
Museum of Fine Arts, St. Petersburg, Florida

*Chihuly in the Garden*  
Atlanta Botanical Garden, Atlanta, Georgia

*Wrapped in Tradition: The Chihuly Collection of American Indian Trade Blankets*  
Durham Western Heritage Museum, Omaha, Nebraska  
C. M. Russell Museum, Great Falls, Montana  
Wichita Art Museum, Wichita, Kansas  
Gilcrease Museum, Tulsa, Oklahoma

*Dale Chihuly at the Reading Public Museum: A Celebration in Glass*  
Reading Public Museum, Reading, Pennsylvania

*Chihuly: Los Angeles*  
Frederick R. Weisman Museum of Art, Malibu, California

2005 *Chihuly at Colorado Springs*  
Colorado Springs Fine Arts Center, Colorado Springs, Colorado

*Gardens of Glass: Chihuly at Kew*  
Royal Botanic Gardens, Kew, London

*Chihuly in Kalamazoo*  
Kalamazoo Institute of Arts, Kalamazoo, Michigan

*Chihuly at Fairchild: A Garden of Glass*  
Fairchild Tropical Botanic Garden, Coral Gables, Florida

2006 *Glass in the Garden: Chihuly at the Missouri Botanical Garden*  
Missouri Botanical Garden, St. Louis, Missouri

*Mille Fiori with Fire Red Tower*  
Children's Museum of Indianapolis, Indianapolis, Indiana

*Chihuly at the New York Botanical Garden*  
New York Botanical Garden, Bronx, New York

*Fiori: A Chihuly Garden of Glass*  
Franklin Park Conservatory, Columbus, Ohio

*Chihuly in Vallauris, Merveilles de Verre*  
Musée Magnelli, Musée de la Céramique, Vallauris, France

*Art & Flowers: Chihuly at Fairchild*  
Fairchild Tropical Botanic Garden, Coral Gables, Florida

- 2007 *Chihuly at the Conservatory: A Garden of Glass*  
Phipps Conservatory and Botanical Gardens, Pittsburgh, Pennsylvania
- Wrapped in Tradition: The Chihuly Collection of American Indian Trade Blankets*  
Louisiana State Exhibit Museum, Shreveport, Louisiana  
Mayborn Museum Complex, Waco, Texas
- 2008 *Chihuly at the de Young*  
de Young Museum, and the Legion of Honor, San Francisco, California
- Chihuly at RISD*  
RISD Museum of Art, Providence, Rhode Island
- Chihuly at Seymour 100*  
W. W. Seymour Botanical Conservatory, Tacoma, Washington
- Chihuly: The Nature of Glass*  
Desert Botanical Garden, Phoenix, Arizona
- Chihuly: Seaforms*  
Columbia Museum of Art, Columbia, South Carolina
- Wrapped in Tradition: The Chihuly Collection of American Indian Trade Blankets*  
El Paso Museum of Art, El Paso, Texas  
Museum of Art at Washington State University, Pullman, Washington
- 2009 *Wrapped in Tradition: The Chihuly Collection of American Indian Trade Blankets*  
Leigh Yawkey Woodson Art Museum, Wausau, Wisconsin
- Chihuly Seaforms*  
Flint Institute of Arts, Flint, Michigan
- Mille Fiori Venezia* installation, in *Making Worlds*  
Venice Biennale, Venice, Italy
- Chihuly Reimagined*  
Franklin Park Conservatory, Columbus, Ohio
- Chihuly Toledo!*  
Toledo Museum of Art, Toledo, Ohio
- Chihuly Illuminated*  
Columbus Museum of Art, Columbus, Ohio
- 2010 *Chihuly: Recent Work*  
Naples Museum of Art, Naples, Florida
- Chihuly at the Salk*  
Salk Institute for Biological Studies, La Jolla, California



*Chihuly at the Frederik Meijer Gardens & Sculpture Park: A New Eden*  
Frederik Meijer Gardens & Sculpture Park, Grand Rapids, Michigan

*Chihuly at the Frist*  
Frist Center for the Visual Arts, Nashville, Tennessee

*Chihuly at Cheekwood*  
Cheekwood Botanical Garden and Museum of Art, Nashville, Tennessee

*Red Reeds at the 2010 International VSA Festival*  
John F. Kennedy Center for the Performing Arts, Washington, D.C.

*Chihuly Collection*  
Morean Arts Center, St. Petersburg, Florida

2011 *Chihuly: Through the Looking Glass*  
Museum of Fine Arts, Boston, Boston, Massachusetts

*Dale Chihuly's Northwest*  
Tacoma Art Museum, Tacoma, Washington

*Illuminations: Rediscovering the Art of Dale Chihuly Collection + Chihuly: Northwest*  
Oklahoma City Museum of Art, Oklahoma City, Oklahoma

*Chihuly Venetians: From the George R. Stroemple Collection*  
Fort Collins Museum of Art, Fort Collins, Colorado

2012 *Chihuly Garden and Glass*  
Seattle Center, Seattle, Washington

*Chihuly Venetians: From the George R. Stroemple Collection*  
Foothills Art Center, Golden, Colorado  
Kimball Art Center, Park City, Utah

*Origins: Early Works by Dale Chihuly*  
Museum of Glass, Tacoma, Washington

*Chihuly at the Dallas Arboretum*  
Dallas Arboretum and Botanical Garden, Dallas, Texas

*Chihuly at the VMFA*  
Virginia Museum of Fine Arts, Richmond, Virginia

2013 *Chihuly Venetians: From the George R. Stroemple Collection*  
Paine Art Center and Gardens, Oshkosh, Wisconsin

*Chihuly: Tradition and Transformation*  
Jundt Art Museum, Gonzaga University, Spokane, Washington

*Chihuly*  
Montreal Museum of Fine Arts, Montreal, Quebec, Canada

*Chihuly in the Garden*  
Desert Botanical Garden, Phoenix, Arizona

2014 *Chihuly Rediscovered*  
Colorado Springs Fine Arts Center, Colorado Springs, Colorado

*Chihuly*  
Clinton Presidential Library and Museum, Little Rock, Arkansas

*Chihuly*  
Denver Botanic Gardens, Denver, Colorado

*Ulysses Cylinders by Dale Chihuly and Seaver Leslie with Flora C. Mace and Joey Kirkpatrick*  
Coach House, Dublin Castle, Dublin, Ireland

*Chihuly at Fairchild*  
Fairchild Tropical Botanic Garden, Coral Gables, Florida

2015 *Chihuly Drawings*  
Museum of Glass, Tacoma, Washington

*Chihuly Venetians: From the George R. Stroemple Collection*  
Museum of Glass, Tacoma, Washington

*Glass Art Garden: The Chihuly Experience*  
Toyama Glass Art Museum, Toyama, Japan

*Ulysses Cylinders by Dale Chihuly and Seaver Leslie with Flora C. Mace and Joey Kirkpatrick*  
Vassar College, Poughkeepsie, New York

2016 *Chihuly: Works from Texas Collections*  
Tyler Museum of Art, Tyler, Texas

*Chihuly in the Garden*  
Atlanta Botanical Garden, Atlanta, Georgia

*Chihuly Drawings*  
Wichita Art Museum, Wichita, Kansas

*Chihuly*  
Royal Ontario Museum, Toronto, Ontario, Canada

*Chihuly Venetians: From the George R. Stroemple Collection*  
Reading Public Museum, Reading, Pennsylvania



- 2017 *Chihuly at the Catalina Island Museum*  
Catalina Island Museum, Avalon, Santa Catalina Island, California
- Chihuly*  
New York Botanical Garden, Bronx, New York
- Chihuly: In the Gallery and In the Forest*  
Crystal Bridges Museum of American Art, Bentonville, Arkansas
- 2018 *Chihuly at Biltmore*  
Biltmore Estate, Asheville, North Carolina
- Chihuly–Libenský–Brychtová*  
DOX Centre for Contemporary Art, Prague, Czech Republic
- Chihuly*  
Groninger Museum, Groningen, Netherlands
- 2019 *Chihuly: Reflections on Nature*  
Royal Botanic Gardens, Kew, London
- Chihuly: Celebrating Nature*  
Franklin Park Conservatory and Botanical Gardens, Columbus, Ohio
- Ulysses Cylinders by Dale Chihuly and Seaver Leslie with Flora C. Mace and Joey Kirkpatrick*  
Community Library, Ketchum, Idaho
- 2020 *Chihuly at Cheekwood*  
Cheekwood Estate & Gardens, Nashville, Tennessee
- Venice and American Studio Glass*  
Le Stanze del Vetro, Venice, Italy
- Dreaming Forms: Chihuly Then and Now*  
Artis—Naples, The Baker Museum, Naples, Florida
- 2021 *Dale Chihuly: Glass in Bloom*  
Gardens by the Bay, Singapore
- Chihuly in the Desert*  
Desert Botanical Garden, Phoenix, Arizona  
Taliesin West, Scottsdale, Arizona
- 2022 *Chihuly Then and Now: The Collection at Twenty*  
Oklahoma City Museum of Art, Oklahoma City, Oklahoma
- Dale Chihuly: Blanket Cylinders 1975–2016*  
Community Library, Ketchum, Idaho





Published on the occasion of the exhibition Chihuly:  
*Four Decades of Iconic Work*  
February 25, 2024

Catalogue design by Abdelkarim El-Ghribi  
Front Cover Image: *Opera Blue Seaform Set with  
Turkish Red Lip Wraps (detail)*  
1999, 12 x 25 x 16"  
Back Cover Image: *Orchid and King's Blue Persian  
Set (detail)*, 2002, 18 x 43 x 21 "

All artwork and photography © 1985–2023 Chihuly  
Studio. All rights reserved.  
Photography: Barbara Dubois, Scott Mitchell Leen,  
Teresa Nouri Rishel, Nathaniel Willson

LEILA HELLER GALLERY  
I-87, Alserkal Avenue, PO Box 413991,  
Al Quoz 1, Dubai, UAE  
[www.Leilahellergallery.com](http://www.Leilahellergallery.com)  
Publication © 2024 LEILA HELLER GALLERY, Dubai







LEILA HELLER GALLERY.