

LEILA HELLER.

MARCOS
GRIGORIAN



Marcos Grigorian
Tree of Life, 1961
Mixed media, compound on canvas
109.86h x 45.72w cm

EXHIBITED

New York, Leila Heller Gallery, Marcos Grigorian: Earthworks, September 27–October 29, 2011, illustrated in color

LITERATURE

Marcos Grigorian: Earthworks, Leila Heller Gallery, 2011, illustrated in color



Marcos Grigorian
Vibration #4, 1963

Straw and earth compound on another compound on burlap
24h x 20w in
60.96h x 50.80w cm

PROVENANCE

Artist Estate

EXHIBITED

New York, Leila Heller Gallery, Marcos Grigorian: Earthworks, September 27–October 29, 2011, illustrated in color

LITERATURE

Marcos Grigorian: Earthworks, Leila Heller Gallery, 2011, illustrated in color

DESCRIPTION

Vibration #4 is a quintessential artwork from Earthworks series and is composed of soil on canvas, materials from which Grigorian sought to create a visual lexicon of land and earth. The symbolism of soil is not only a reference to humanity's primal relationship with nature, but also it also directly engages with the local landscape of Iran. Instead of creating large site-specific works, he rather contemplated and was interested in emphasizing the particular details of earth itself: its rugged and arid textures, its muted colors, or its granular surfaces.



Marcos Grigorian
Earth work, 1963
Mixed media and soil on canvas
85.09h x 41.91w x 6.35d cm

EXHIBITED

New York, Leila Heller Gallery, Marcos Grigorian: Earthworks, September 27–October 29, 2011, illustrated in color

LITERATURE

Marcos Grigorian: Earthworks, Leila Heller Gallery, 2011, illustrated in color



Marcos Grigorian
Upstairs Downstairs, 1968
Straw and earth compound on another compound on burlap
182.88h x 91.44w cm

EXHIBITED

New York, Leila Heller Gallery, Marcos Grigorian: Earthworks, September 27–October 29, 2011, illustrated in color

LITERATURE

Marcos Grigorian: Earthworks, Leila Heller Gallery, 2011, illustrated in color



Marcos Grigorian
Sangak Bread, 1966
49.50h x 30w in 125.73h x 76.20w cm

EXHIBITED

New York, Leila Heller Gallery, Marcos Grigorian: Earthworks, September 27–October 29, 2011, illustrated in color

LITERATURE

Marcos Grigorian: Earthworks, Leila Heller Gallery, 2011, illustrated in color

DESCRIPTION

Sangak is an assembled work featuring the kind of food traditionally eaten by Iran's working classes. Like Jean-Michel Basquiat, who worked in another time and place, Grigorian pointed to those who subsisted on the edges of society, making a meal by eating a bit of bread while sitting on a patch of dried earth. Grigorian's aesthetic was humble by intention, pointing to those left behind by the Shah's grand modernization programs.



Marcos Grigorian
Full Loaf, 1966
Acrylic And Glazed Bread On Burlap
39.25h x 30.25w in
99.70h x 76.84w cm

EXHIBITED

New York, Leila Heller Gallery, Marcos Grigorian: Earthworks, September 27–October 29, 2011, illustrated in color

LITERATURE

Marcos Grigorian: Earthworks, Leila Heller Gallery, 2011, illustrated in color

DESCRIPTION

Sangak is an assembled work featuring the kind of food traditionally eaten by Iran's working classes. Like Jean-Michel Basquiat, who worked in another time and place, Grigorian pointed to those who subsisted on the edges of society, making a meal by eating a bit of bread while sitting on a patch of dried earth. Grigorian's aesthetic was humble by intention, pointing to those left behind by the Shah's grand modernization programs.



Marcos Grigorian
Sangak, 1967

Persian bread, stones and resin on earth, compound on burlap
56.25h x 31.50w in
142.88h x 80.01w cm

PROVENANCE
Artist Estate

EXHIBITED
New York, Leila Heller Gallery, Marcos Grigorian: Earthworks, September 27–October 29, 2011,
illustrated in color

LITERATURE
Marcos Grigorian: Earthworks, Leila Heller Gallery, 2011, illustrated in color

DESCRIPTION
Sangak is an assembled work featuring the kind of food traditionally eaten by Iran's working classes—bread, pistachios, beef stew, and tea with sugar cubes. Like Jean-Michel Basquiat, who worked in another time and place, Grigorian pointed to those who subsisted on the edges of society, making a meal by eating a bit of bread while sitting on a patch of dried earth. Grigorian's aesthetic was humble by intention, pointing to those left behind by the Shah's grand modernization programs.



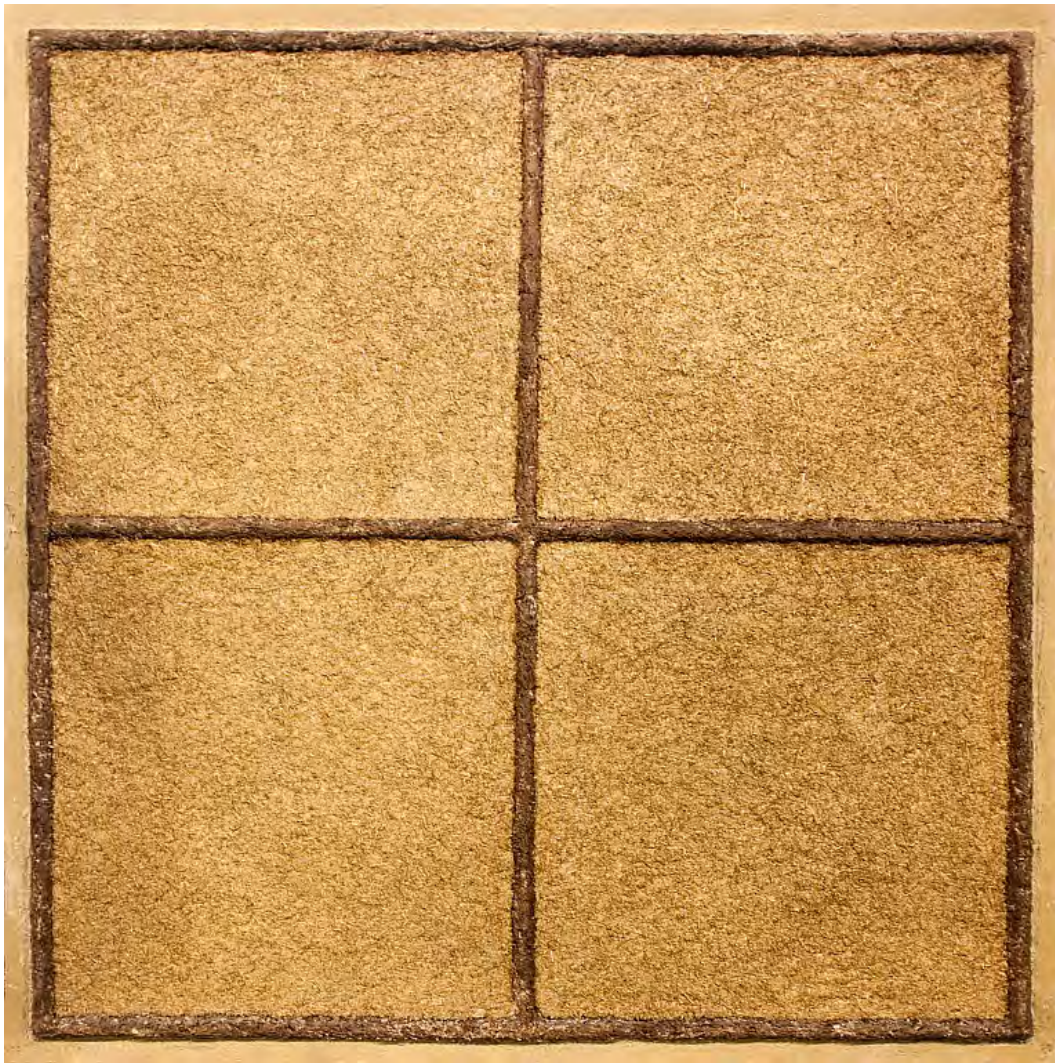
Marcos Grigorian
Dizy Abqoust #3, 1979
Bread, sugar, ceramic and food sealed in resin
25.50h x 25w in
64.77h x 63.50w cm

EXHIBITED

New York, Leila Heller Gallery, Marcos Grigorian: Earthworks, September 27–October 29, 2011, illustrated in color

LITERATURE

Marcos Grigorian: Earthworks, Leila Heller Gallery, 2011, illustrated in color
Asia Society. Museum. Iran Modern. Edited by Fereshteh Daftari, and Layla S. Diba. Asia Society Museum, 2013.



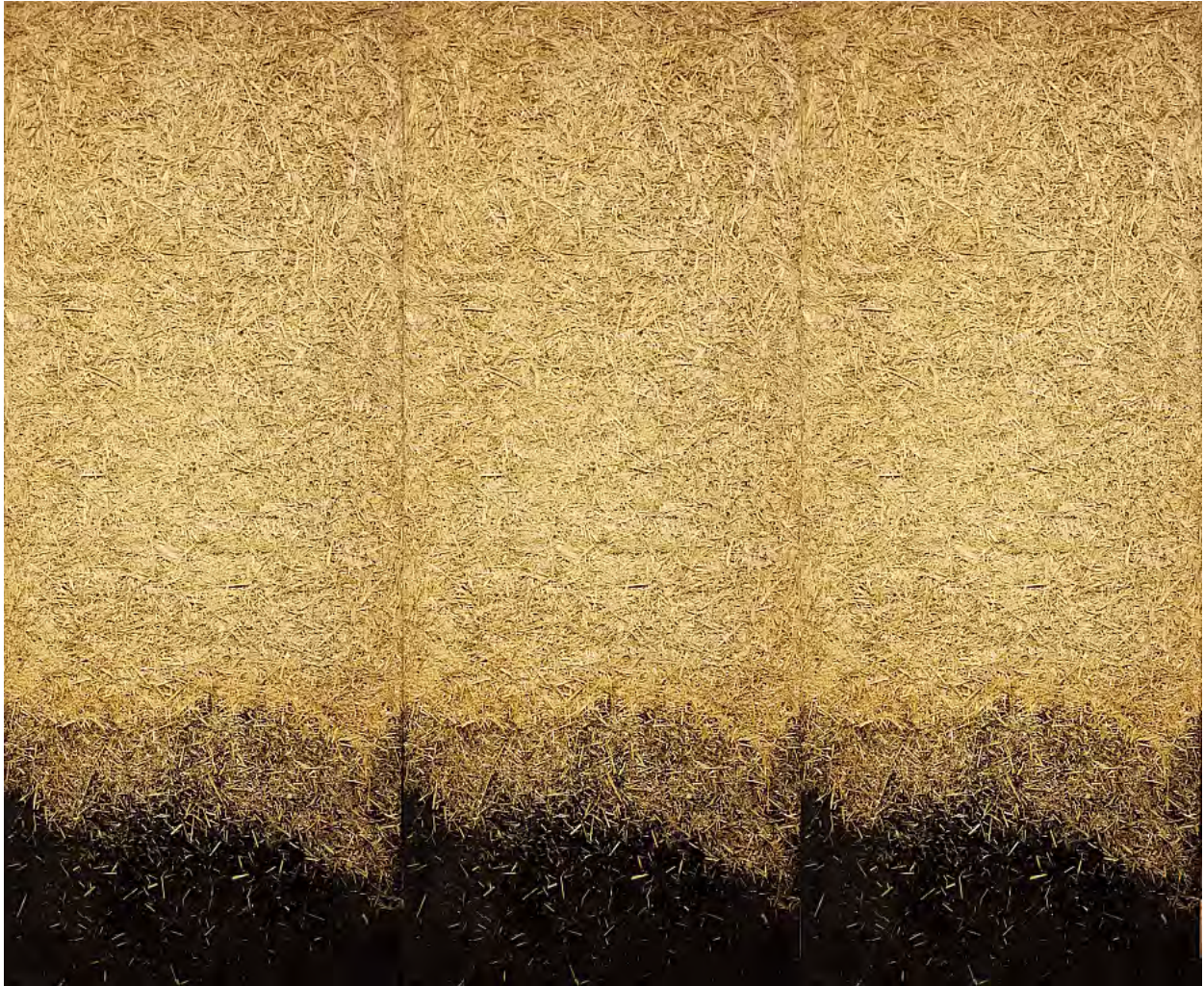
Marcos Grigorian
Sign of Eternity, 1982 - 1988
72h x 72w in
182.88h x 182.88w cm

EXHIBITED

New York, Leila Heller Gallery, Marcos Grigorian: Earthworks, September 27–October 29, 2011, illustrated in color

LITERATURE

Marcos Grigorian: Earthworks, Leila Heller Gallery, 2011, illustrated in color



Marcos Grigorian
Straw Triptych, 1982 - 1988
Panel 1 Of Similar Earth Works
32h x 72w in
81.28h x 182.88w cm

EXHIBITED

New York, Leila Heller Gallery, Marcos Grigorian: Earthworks, September 27–October 29, 2011, illustrated in color

LITERATURE

Marcos Grigorian: Earthworks, Leila Heller Gallery, 2011, illustrated in color



Marcos Grigorian
Horizontal earth work, 1982 - 1988
74h x 74w in
187.96h x 187.96w cm

EXHIBITED

New York, Leila Heller Gallery, Marcos Grigorian: Earthworks, September 27–October 29, 2011, illustrated in color

LITERATURE

Marcos Grigorian: Earthworks, Leila Heller Gallery, 2011, illustrated in color

DESCRIPTION

Earthwork is a quintessential artwork from his series of the same name and is composed of soil on canvas, materials from which Grigorian sought to create a visual lexicon of land and earth. The symbolism of soil is not only a reference to humanity's primal relationship with nature, but also it also directly engages with the local landscape of Iran. Instead of creating large site-specific works, he rather contemplated and was interested in emphasizing the particular details of earth itself: its rugged and arid textures, its muted colors, or its granular surfaces.



Marcos Grigorian
Eclipse, 1988
Mixed media on panel
31.25h x 25.50w x 6d in
79.38h x 64.77w x 15.24d cm

EXHIBITED

New York, Leila Heller Gallery, Marcos Grigorian: Earthworks, September 27–October 29, 2011, illustrated in color

LITERATURE

Marcos Grigorian: Earthworks, Leila Heller Gallery, 2011, illustrated in color



Marcos Grigorian

Eclipse, 1988

Found construction object on acrylic mixed media compound on board

32h x 23.33w in

81.28h x 59.27w cm

EXHIBITED

New York, Leila Heller Gallery, Marcos Grigorian: Earthworks, September 27–October 29, 2011, illustrated in color

LITERATURE

Marcos Grigorian: Earthworks, Leila Heller Gallery, 2011, illustrated in color



Marcos Grigorian
1964



Marcos Grigorian
Cosmopolis, 1965



Marcos Grigorian
Cosmopolis, 1965
18h x 18w in
45.72h x 45.72w cm



Marcos Grigorian
Birth of Galaxy, 1965
30 x 40 in. (76.2 x 101.6 cm)

LITERATURE

Grigorian, Marcos, *Earthworks*, Gorky Gallery, New York, 1989, p. 45, illustrated in color



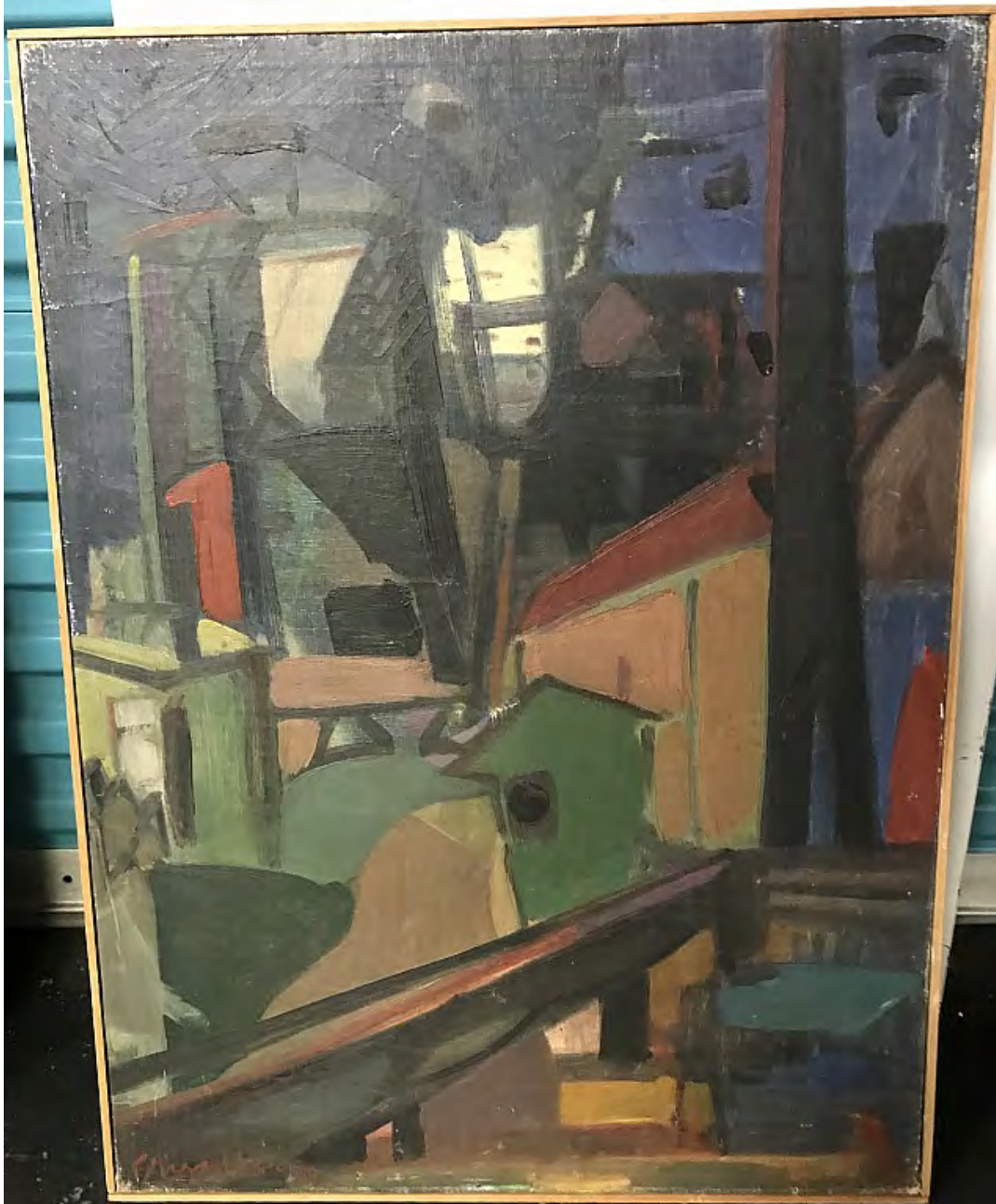
Marcos Grigorian
Eclipse, 1966
22.5 x 45.5 in.
57.15 x 115.57 cm.

LITERATURE

Grigorian, Marcos, *Earthworks*, Gorky Gallery, New York, 1989, p. 40, illustrated in color



Marcos Grigorian
Untitled (Piazza), 1932
Oil on canvas
22h x 28w in
55.88h x 71.12w cm



Marcos Grigorian
Factory, Rome, 1952
Oil on canvas
31h x 23w in
78.74h x 58.42w cm



Marcos Grigorian
Roma, 1953
Oil on canvas
50h x 50w in
127h x 127w cm



Marcos Grigorian
Impostazione, 1958
Oil on canvas
38h x 29w in
96.52h x 73.66w cm



Marcos Grigorian
Untitled (Roma/Tehran), 1953-76
Oil on canvas
54h x 38w in
137.16h x 96.52w cm



Marcos Grigorian
Untitled, 1973
Oil on Canvas
46h x 45w in
116.84h x 114.30w cm



Marcos Grigorian
Antichi Tempi
Oil on paper
40.50h x 30.50w in
102.87h x 77.47w cm



Marcos Grigorian
Specehio Rotto, 1950
Oil on canvas
26h x 20w in
66.04h x 50.80w cm



Marcos Grigorian
Untitled, 1953
Oil on canvas
31h x 22w in
78.74h x 55.88w cm



Marcos Grigorian
La Famiglia in Villa Borgese, 1953
Oil on canvas
27h x 38w in
68.58h x 96.52w cm



Marcos Grigorian
The Dream Girls, 1955
Oil on canvas
39h x 27w in
99.06h x 68.58w cm



Marcos Grigorian
Caffelatte, 1952
Oil on canvas
28h x 20w in
71.12h x 50.80w cm



Marcos Grigorian
Agonia, 1951
Oil on canvas
35h x 27w in
88.90h x 68.58w cm



Marcos Grigorian
Novak, 1953
Oil on canvas
38h x 27.50w in
96.52h x 69.85w cm



Marcos Grigorian
La Cantadina, 1954
Oil on canvas
47h x 31w in
119.38h x 78.74w cm

LEILA HELLER.



Marcos Grigorian
Lilith in Ostica Antica, 1957



Marcos Grigorian
Annunciazione, 1965-75
Oil on canvas
79h x 63w in
200.66h x 160.02w cm



Marcos Grigorian
Untitled, 1984
Oil on canvas
43h x 40w in
109.22h x 101.60w cm



Marcos Grigorian
Playing Monkey, 1981
Oil on canvas
42h x 48w in
106.68h x 121.92w cm



Marcos Grigorian
Adam and Eve, 1988
Oil on canvas
68.50h x 48w in
173.99h x 121.92w cm



Marcos Grigorian
Adam and Eve
Oil on canvas
107.50h x 76w in
273.05h x 193.04w cm



Marcos Grigorian
Shoqhere, 1982
Oil on canvas
24h x 18w in
60.96h x 45.72w cm



Marcos Grigorian
Lilith, 1989
Oil on canvas
46.50h x 56.60w in
118.11h x 143.76w cm



Marcos Grigorian
Lilith, 1990
Oil on canvas
60h x 48w in
152.40h x 121.92w cm



Marcos Grigorian
Mrs. Laris Sahakan, 2004
Oil on canvas
43h x 33w in
109.22h x 83.82w cm



Marcos Grigorian

Lilith

Oil on canvas

98h x 59.50w in

248.92h x 151.13w cm



Marcos Grigorian
Untitled, 1984
Oil on canvas
68h x 70w in
172.72h x 177.80w cm



Marcos Grigorian
Refugees of Van 1915, 1986
Oil on canvas
60h x 66w in
152.40h x 167.64w cm



Marcos Grigorian
Untitled, 1977
Oil on paper
38h x 26w in
96.52h x 66.04w cm



Marcos Grigorian
Untitled, 1971
Oil on canvas
30h x 39w in
76.20h x 99.06w cm



Marcos Grigorian
1986



Marcos Grigorian
Lavra, 1986
Oil on canvas
26.50h x 20.50w in
67.31h x 52.07w cm



Marcos Grigorian
Untitled, 1974
Drawing on board
43.50h x 43.50w in
110.49h x 110.49w cm



Marcos Grigorian
Studies for the Gates of Auschwitz, c. 1950's
Oil on canvas
73h x 125w in
185.42h x 317.50w cm