

LEILA HELLER GALLERY.

February 2013 Newsletter

Events

UPCOMING EXHIBITION AT MECA OPENING THIS SUNDAY

MECA and Leila Heller Gallery present

The Space Between: Contemporary Perspectives on Tradition and Society

March 3 – May 5, 2013

Opening: Sunday, March 3, 1 – 5pm

Transportation leaving from Milk Studios (450 W 15th St, NYC) beginning 12:30 pm every half hour

MECA, Middle East Center For The Arts

888 Newark Avenue, Jersey City, NJ



At Mana Contemporary, the Middle East Center for the Arts (MECA) in collaboration with Leila Heller Gallery will show works by prominent Iranian and Arab artists that explore not the binaries and stereotypes of the Middle East, but rather the space between. Having undergone geographical relocation and exile, these artists inhabit an ambiguous and contested space, situated within a contemporary landscape permeated by cultural and historical legacies.

Artists included in the exhibition are: Shoja Azari, Leila Pazooki, Roya Akhavan, Ayad Alkadhi, Khosrow Hassanzadeh, Hadieh Shafie, and Youssef Nabil.

[Read More](#)

Image: Khosrow Hassanzadeh, *Haft Khan*, detail, 2010, silk screen, paint, gold leaf, 728 ceramic tiles, 77 x 33 in (195 x 845 cm)

CURRENT

SHIVA AHMADI

Apocalyptic Playland

February 21 – March 23, 2013

Leila Heller Gallery

568 West 25th Street

Reception: Thursday March 7, 6 – 8pm

Apocalyptic Playland will feature new paintings, works on paper, and will also include the artist's first foray into video work. A catalogue with an essay by Heather Ecker, Head of Curatorial Affairs of the Aga Khan Museum, will accompany the exhibition.

Although on the surface Ahmadi's works appear vibrant, playful, and even mythical, they nevertheless deal very much with the harsher sides of reality. Through thick layers of generously spread opaque reds and purples, Ahmadi's delicate final touches consist of ornate floral patterns painstakingly applied with metallic gold ink. By creating such a lush world that is at once beautiful and captivating, yet ultimately destabilizing and unsettling, the artist explores the sugar-coating and detachment that comes from corruption.



[Press Release](#)

Image: Shiva Ahmadi, *Untitled 13 (from Throne)*, 2012, Watercolor ink and acrylic on Aquaboard, 20 x 16 in (51 x 41 cm)

REZA ARAMESH

Cultural Freedom in Europe

February 14 – March 14, 2013

European Economic and Social Committee (EESC), European Committee of the Regions (COR), Goethe-Institut Brussels

Belliardstraat 99, 1040 Brussels

An art exhibition on Europe at the European district in Brussels including works from more than thirty artists from fifteen countries. The exhibition deals with the critical fundamentals of the

European mind and reflects on cultural freedom from various perspectives. It will take place at The European Economic and Social Committee (EESC), The European Committee of the Regions (COR) and the Goethe-Institut Brussels. Artists, among others: Michaël Aerts, Reza Aramesh, Davide Bertocchi, Olaf Breuning, Veronica Brovall, Michael Clegg & Martin Guttman, Tim Eitel, Rainer Ganahl,

Ane Hjort Guttu, Eberhard Havekost, Enrique Marty, Philip Metten, Jonathan Monk, Frank Nitsche, Nils Norman, Reynold Reynolds & Patrick Jolley, Ariel Schlesinger, Hannes Schmid, Anne-Marie Schneider, Nedko Solakov, Johan Vangeluwe, Koen Vanmechelen, Heidi Voet.



[Read More](#)

Image: Reza Aramesh, *Action 108*, Hand printed Silver Gelatin, mounted on aluminum and archival board, and framed in black aluminum and museum glass, 96.5 x 75.2 in (245 x 191 cm)

UPCOMING

THE ARMORY SHOW

March 7 – 10, 2013

Piers 92 & 94

New York City

Booth 734: Leila Heller Gallery

VIP Preview: Wednesday, March 6, 2 – 8pm

Leila Heller Gallery is pleased to participate in The Armory Show, the largest art fair in New York, and one of the principal annual events in the international art market calendar. The fair will take place from March 7 to March 10 with a VIP preview on March 6, at Piers 92 & 94. The gallery will feature work of Ayad Alkadhi, Hadieh Shafie, Leila Pazooki, Rachel Lee Hovnanian, and Reza Aramesh.

View our exhibitor page on Artsy:



<http://artsy.net/thearmoryshow/browse/show/leila-heller-gallery>.

Press Release

Image: Hadieh Shafie, *Ghalb 1* (Heart), from *Ketab* series, 2013, Ink, acrylic and paper with printed and hand written Farsi Text Esheghe "Love/Passion", 30 x 12.25 x 3 in (76.2 x 31.2 x 7.6 cm)

FARIDEH LASHAI

In Memory of Farideh Lashai (1944 – 2013)

March 18 – June 18, 2013

Opening: March 18, 6 – 9 pm

Farjam Foundation DIFC

Dubai

The Farjam Foundation, Dubai, will present the exhibition *In Memory of Farideh Lashai (1944–2013)*, opening March 18, 6–9 pm at the Farjam Foundation, DIFC. The exhibition will run through June 18, 2013.

Lashai's intricate and wholly commanding works speak not only to Iranians, but also to a global audience who are captivated by the delicate layers of meaning and reference present in her oeuvre. Through the amalgamated use of layered mediums such as video, paintings, and sound, she brings to life ephemeral movements of iconic figures and other characters projected upon striking paintings of nature. Her search for meaning in identity and self are revealed through a personal journey of navigating through the competing dissonant political and intellectual struggles present in her homeland. She has established a prominent legacy through putting forth a compelling Iranian aesthetic in Contemporary Middle Eastern art and she will undoubtedly continue to be an inspiration to artists at home and abroad for generations to come.



Image: Farideh Lashai, *Le Temps Perdu*, Oil on canvas with video installation, 53 x 59 in (134.6 x 150 cm)

FARIDEH LASHAI

Rabbit in Wonderland Series

April 4 – April 27, 2013

Leila Heller Gallery

568 West 25th Street

Leila Heller Gallery and Edward Tyler Nahem Fine Art will host a two gallery show in New York to celebrate the career of Farideh Lashai featuring an extended version of *Rabbit in Wonderland* at Leila Heller Gallery (April 4 – April 27), and *El Amal*, *Le Temps Perdu*, amongst others at Edward Tyler Nahem (April 4 – May 7, 2013). A joint-gallery catalogue with essays by Negar Azimi, Senior Editor of *Bidoun* magazine, and Sam Bardaouil, Co-founder and Curator of *Art Reoriented*, will accompany the exhibition.



Image: Farideh Lashai, *Catching the Moon*, 2012, Sound and projected animation in a water well of stainless steel, 4.30 minutes, 27.5 in height (70 cm)

ELIZABETH THOMPSON

Stories from the Everglades

Palm Beach Pop-Up Show

March 5 – April 5, 2013,

327 Royal Poinciana Plaza Palm Beach, Florida

Celebrating a primeval wilderness, *Stories from the Everglades* presents paintings and watercolors depicting possible, but improbable narratives. Elizabeth Thompson was Artist in Residence in Everglades National Park in 2006. This experience deepened her emotional and aesthetic bond with the Everglades.

www.elizabeththompsonart.com

[Read More](#)



Image: Elizabeth Thompson, *Animal Perspective*, 2013, Oil on canvas, 60 x 73 in (152.4 x 185.4 cm)

GULAY SEMERCIOGLU and KEZBAN ARCA

BATIBEKI

Sublime Porte: An exhibition of Contemporary Turkish Art

March 15 – May 2, 2013

Opening Reception: Thursday, March 15,

4:30 – 6:30pm

St. John's University

Dr. M. T. Geoffrey Yeh Art Gallery/

Sun Yat Sen Hall

8000 Utopia Parkway, Queens, New York

St. John's University is honored to present Sublime Porte: Art and Contemporary Turkey, an exhibition which features a broad range of contemporary works by a select group of emerging and internationally acclaimed artists whose works respond to Turkey's rich cultural diversity. The exhibition addresses issues of race, gender, sexuality, religion and politics as well as broader arguments concerning art, culture and globalization.



The group exhibition features works by: Osman Akan, Burak Arikan, Kezban Arca Batibeki, Nezaket Ekici, Paul Fabozzi, Murat Germen, Peter Hristoff, Gözde İlkin, Michael Marfione, Alex Morel, Arzu Ozkal, Murat Pulat, Gulay Semercioglu, Orkan Telhan and Elif Uras.

[Read More](#)

Image: Gulay Semercioglu, *Silver Waves*, 2009, Wire wood screws, 78.7 x 47.2 in (200 x 120 cm)

RAN HWANG

New Works

March 7 – March 23, 2013

On view at Leila Heller Gallery

568 West 25th Street, New York

During The Armory Show, Ran Hwang will feature new works in the gallery project space. Using common, mass-produced fashion materials, Hwang creates striking works of art that transform and re-contextualize these everyday objects. Sparkling buttons, shimmering beads, and long spools of thread are affixed to wood panels with thousands of pins to form, temples, plum blossoms and other iconic symbols of Zen Buddhism.



Image: Ran Hwang, *An Ode to the Second Full Moon*, 2013, Paper buttons and pins on Plexiglas panel, 46 x 46 in (116.8 x 116.8 cm)

ART DUBAI

March 20 – 23, 2013

Madinat Jumeirah, Dubai, UAE

Booth A39: Leila Heller Gallery

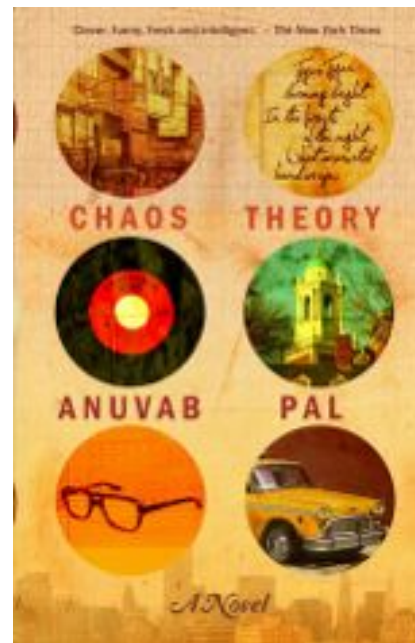


Over the last six years, Art Dubai, the leading international art fair in the MENASA (Middle East/ North Africa/South Asia), has become a cornerstone of the region's booming contemporary art community. Leila Heller Gallery is pleased to participate in its 7th Edition, exhibiting the works of Ayad Alkadhi, Khosrow Hassanazadeh, Nir Hod, Rachel Lee Hovnanian, Rashid Khalifa, Farideh Lashai, Hadieh Shafie, Yasmin Noureldin, Shiva Ahmadi, Gulay Semercioglu, & Iké Udé.

Image: Ayad Alkadhi, *Untitled* (Umbilical Series), 2012, Charcoal acrylic pen and pencil on canvas, 96 x 240 in (243.8 x 609.6 cm)

Indo-American Arts Council presents
CHAOS THEORY by Anuvab Pal
Book Presentation
March 19, 2013, 6:30 – 8:30pm
Leila Heller Gallery
568 West 25th Street

Chaos Theory: Sunita and Mukesh meet in the classrooms and lawns of St. Stephen's College, New Delhi in the 1960s, going on to Cambridge and Harvard, and ending up as professors at Columbia University in 2001. He teaches Elizabethan poetry and she South Asian History. Vocal, intelligent and well-read, they express all sorts of complicated ideas and emotions in other people's words (Shakespeare, Hegel, Kant) without being able to articulate how they feel about each other.



[Read More](#)

Image: Book Cover of *CHAOS THEORY*

News

ARTINFO

"GALLERY NIGHT [VIDEO]: Shiva Ahmadi's *Apocalyptic Playland*"
February 22, 2013

ARTINFO went to the opening of Shiva Ahmadi's "Apocalyptic Playland", for this week's installment of our "Gallery Night" video series. The Iranian-born artist says her new work is a delicate balance between beauty and violence. The exhibition is on display at the Leila Heller Gallery through March 23.



[View Video](#)

Image: Shiva Ahmadi, *Lotus*, 2013, Watercolor, Ink and Acrylic on Aquaboard, 60 x 120 in (152.4 x 304.8 cm)

Art & Auction
"...Also This Month"
February 2013

Leila Heller Gallery opens a show of new, politically tinged works by the Detroit-based Iranian artist Shiva Ahmadi, including *Untitled*, 2012, on view through March 23.

[Read More](#)

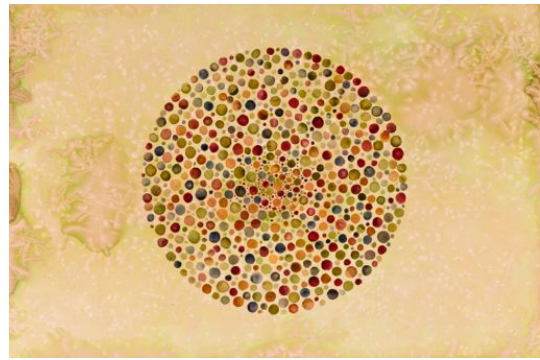


Image: Shiva Ahmadi, *Circles*, 2013, Watercolor, Ink and Acrylic on paper mounted on Aquaboard, 40 x 60 in (101.6 x 152.4 cm)

Vertical
"Julia Mandle in conversation about her current exhibition"
January 30, 2013

We conversed with Julia Mandle about her relationship to Gayle Wells Mandle, her inspiration, interest and chairs.



Vertical: You are collaborating with your mother, how did this start? Has your mother always been your source of inspiration and the starting point of your artistic career?

Julia Mandle: Although we've previously had three mother/daughter exhibition, this is the first time we have collaborated on the actual artwork. Our large collaborative sculpture "Study for a Monument" (2012), related life-sized photography portraits and miniature "trophy" sculpture are the centerpiece of this exhibition. But we made work individually, too – I created new embroidery and drawing and Gayle created several new mixed media paintings. Our collaboration evolved very naturally.

[Read More](#)

Image: Julia Mandle, *Rising Tide*, 2012, Embroidery on fabric, 37 x 23 in (93.9 x 58.4 cm)

GalleristNY

"Stiglitz, Freeland, Mandles Talk Art, Inequality,
at Leila Heller Gallery"

by Zoe Lescaze

February 20, 2013

Chelsea galleries are better known for serving the super rich than taking them to task, but if any 1-percent patrons happened upon Leila Heller Gallery last Tuesday night, they were in for a surprise. A panel discussion devoted to economic inequality brought Nobel Prize-winning economist Joseph Stiglitz and Thomson Reuters Digital Editor Chrystia Freeland to the gallery to speak alongside Roger Mandle, executive director of the Qatar Museums Authority, and artist Gayle Mandle.

[Read More](#)

Image: Gayle Wells Mandle and Julia

Mandle, *Throne Burning*, 2012, Photo printed on silk paper, 84 x 44 in (213.3 x 111.7 cm) edition of 5



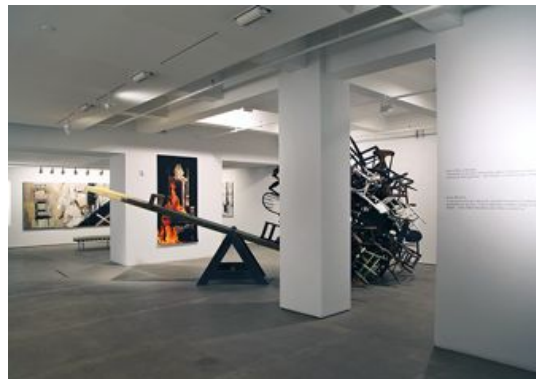
ARTINFO

"One-Line Reviews: Pithy Takes on Alighiero
Boetti, Trevor Paglen, and More"

by Shane Ferro

February 15, 2013

Julia Mandle and Gayle Wells Mandle at Leila
Heller Gallery, 568 West 25th Street, through
February 16



Despite its ironic link to some of the richest plutocrats in the world, this mother-daughter duo (the wife and daughter of former director of and current consultant to the Qatari Museums Authority, Roger Mandle) tackles the overwhelming oppressiveness of inequality by powerfully juxtaposing jumbles of burned chairs with giant, regal thrones using a variety of media.

[Read More](#)

Image: Installation view of *Game II* exhibition at Leila Heller Gallery

Wall Street Journal

"Furniture That Gets Around"

by Stefanos Chen

February 2013

At the Mark Hotel on New York Upper East Side, developer Izak Senbahar, president of Alexico Group, likes to use art to add impact. His relationship with local galleries has allowed him to borrow works from interesting artists, he said. For example, Rachel Lee Hovnanian's piece "LA Lights," part of a series of full-length mirrors with a pointed sense of humor, has appeared in a model apartment used to show off the units' amenities.

[Read More](#)



Image: Rachel Lee Hovnanian, *LA Lights*, 2011, Steel, glass, narcissus flowers, glass vials, LED bulbs, plexiglass, 45 x 78 x 8 in (114 x 198 x 20 cm)

Art+Auction

"Manhattan's Winter Glow"

March 2013

A few standout glimpses of five of our favorite art world events in New York:. . .The opening of the Young Collectors Exhibition co-hosted by *Town & Country* magazine at Leila Heller Gallery, in Chelsea.

[Read More](#)



Artclvb

"Artist's Leadership Programme @ Albareh Art Gallery"

by Arie Amaya-Akkermans

February 1, 2013

It has been nearly five years since the "Contemporary Art of Bahrain" exhibition was held at Art Center Berlin, back in 2008, showcasing some of the most mature talents in painting from Bahrain, all of which are still active today. Since then, hardly anything has been heard of Bahraini art in the international scene – perhaps except for the discovery of Rashid Al Khalifa by Leila Heller – and in the tide of changes and turbulences that have swept the Arab world in recent years, perhaps there is no better timing than this to explore and filter what it is that emerging artists from Bahrain want to tell us through their work.



[Read More](#)

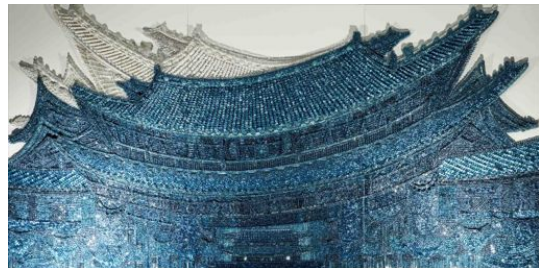
Image: Rashid Khalifa, *The Dark and Bright Side of the Moon*, 2011, Enamel paint on chrome convex, 35.4 x 35.4 in (90 x 90 cm)

PRETTYPINWORK

"Oh My Beautiful Buttons"

February 4, 2013

Ran Hwang was recently featured on thisiscolossal.com, one of my favourite sites for contemporary art, curated by Christopher Jobson. Beautiful imagery created entirely out of buttons, beads and pins? Definitely something I'd love to see in real life, especially when you consider the scale.



[Read More](#)

Image: Ran Hwang, *East Wind*, 2012, Buttons, beads, pins on wood panel, 70 x 141 in (180 x 360 cm)

WELTKUNST

"Messen, Art Dubai"

March 2013

Article in German

Heute scheint es unglaublich, dass mit der Art Dubai im Jahr 2007 die erste internationale Kunstmesse in Asien entstand. Mittlerweile ist deren Zahl explodiert, was auch starke Marktveränderungen des vergangenen Jahrzehnts bedingt hat“, erklärt Antonia Carver, die seit 2012 als Leiterin der Art Dubai fungiert. Schließlich ist es besonders dieser Messe gelungen, in den vergangenen sechs Jahren eine wachsende Zahl von Sammlern aus dem Nahen Osten anzusprechen. Sie ist damit bis heute konkurrenzlos.



[Read More](#)

Image: Hadieh Shafie, *Untitled* (Telesm Series), 2012, Ink, acrylic and paper with printed & hand written Farsi text esheghe "Love", 12 in diameter x 3 in (30.4 cm diameter x 7.6 cm)

Islamic Art Magazine

"Book Review, The Fertile Crescent: Gender, Art and Society"

February 3, 2013

The book is a captivating, timely, and comprehensive overview of the work of contemporary women artists of Middle East heritage who are described by the authors and essayists as living in "unavailable intersections," their "precarity" making them impossible to pigeonhole by simple national or religious identities. The work of these multi-generational, multi-national artists examines and reveals from their global perspectives matters of gender, homeland, geopolitics, theology, and the environment.



[Read More](#)

Image: Negar Ahkami, *Hyperbolic*, 2011, Acrylic and glitter on gessoed panel, 70 x 48 x 3in (177.8 x 122 x 7.6 cm)

568 West 25th Street New York, NY 10001

(Tel) 212 249 7695

(Fax) 212 249 7693

www.leilahellergallery.com

info@leilahellergallery.com

[add us to your address book](#) | [friend on Facebook](#) | [forward to a friend](#)

Copyright © 2011, Leila Heller Gallery, All rights reserved.

[unsubscribe from this](#) [update subscription preferences](#)

Partnership with:

canvas
ART HAS NOTHING AGAINST THE WHITE WALL AND BACK AGAIN