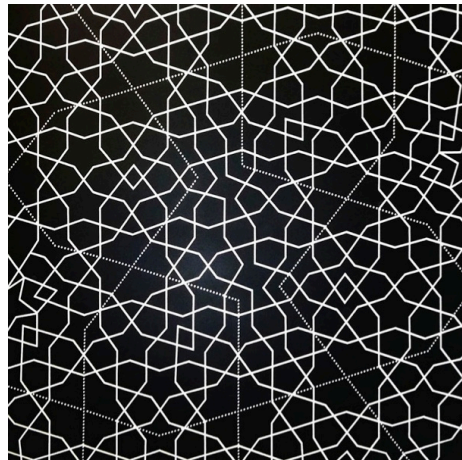


LEILA HELLER GALLERY.

Leila Heller Gallery at Art International Istanbul
September 26 –28, 2014
Booth C4



Shiva Ahmadi
Untitled 2, 2014
Graphite, Pencil on Arches Paper
36 x 28.5 in (framed) / 91.4 x
72.4 cm



Steven Naifeh
Topkapi XXIII, 2013
Acrylic on Canvas
72 x 72 in / 182.88 x 182.88 cm

Leila Heller Gallery is pleased to announce its participation in ArtInternational Istanbul, September 26 – 28, 2014, at the Haliç Congress Center, booth C4. In the main space, the gallery will exhibit a presentation of established contemporary and modern masters. Additionally, Leila Heller Gallery will present a limestone Saida sculpture by Steven Naifeh in the fair's outdoor space, "By the Waterside."

Among the highlights will be three pieces created by contemporary sculptor, Richard Hudson. His form-based works directly embody beauty, with their caressing curves, highly polished surfaces, and simplified lines. Hudson uses a variety of mediums from bronze patina to polished steel, plywood, and white marble. In *Torso II*, the artist draws inspiration from Brancusi's work as a sculptor. Round marble shapes, the purity of white, and polished surfaces that seem very delicate are very common to both approaches. By using marble, Hudson underlines both the figure depicted and the actual impression that the viewer might get from looking at the sculpture; softness that can crumble at any given moment.

Also on view in the main space will be drawings by Shiva Ahmadi, an Iranian artist who explores Persian traditions and depicts the oppressed societies of both East and West through the use of diverse mediums. Three of Ahmadi's new drawings will be displayed, including *Untitled 2*, shown above. This piece is a narrative drawing composed of detailed figures, one of a faceless man portrayed with a basket full of animals' heads, the other of the dead animals in question. Ahmadi chooses to express the brutality of man's action in a symbolic way: by murdering these animals, it seems as though the man loses his soul and his ability to see beyond his interests. *Untitled 5* and *Untitled 6* will accompany her other piece in the main space.

LEILA HELLER GALLERY.

Similarly on view in the main space will be works by contemporary artists, including: Reza Aramesh, Kezban Arca Batibeki, Rachel Hovnanian, Ran Hwang, Steven Naifeh, Shirin Neshat and Murat Pulat.

In the fair's outdoor space: "By the Waterside", Steven Naifeh's limestone sculpture, *Saida XXXVII: Limestone*, will be displayed. In his *Saida* series, Naifeh combines the satisfying resolution of geometry with the playfulness of Op. Art. This particular piece was produced in Turkey and is made of Limra limestone, the most important and in-demand limestone in the region.

About ArtInternational Istanbul:

ArtInternational launched in September 2013 at the Haliç Congress Center in Istanbul to strong acclaim. Bringing together leading international and local galleries, this preeminent modern and contemporary art fair in Istanbul offers unrivalled access to exciting art from Turkey, Europe, the US, the Middle East and beyond. Drawing on its unique geographic location as a gateway between 'East' and 'West', the fair is fast becoming a cultural bridge across the global art world. In addition to the participation of leading and emerging galleries, the fair provides a program of exhibitions, events, and forums, enabling visitors to experience the rich cultural history of Istanbul alongside the flourishing local contemporary art scene developing today.

About Leila Heller Gallery:

Leila Heller Gallery promotes a cutting edge program of international contemporary emerging and mid-career artists. The gallery has gained worldwide recognition as a pioneer in promoting contemporary artists from the Middle East, Central Asia, Southeast Asia and Turkey. In addition to its roster of contemporary artists, the gallery is also active in the American, European and Middle Eastern secondary art markets.

In 2010, after nearly 30 years operating on the Upper East Side, Leila Heller Gallery moved to West 25th Street in the heart of Chelsea's gallery district. In 2014, Leila Heller Gallery expanded to a second location in New York City at 43 West 57th Street, a six-floor gallery space totaling 18,000 square feet, which is amongst the largest in New York. Leila Heller Gallery 57th Street is unique: a versatile multi-level space with over 10,000 square feet of conventional exhibition space, a 60-seat theater/auditorium, a library to house the gallery's extensive art book collection and a 3,250 square foot project space for the purpose of showcasing exhibitions by emerging artists and curators. The exhibition program focuses on historical material, including solo exhibitions and survey shows focusing on broader art movements and themes.

The new gallery complements the West 25th Street location in Chelsea, which remains dedicated to fostering the careers of emerging and mid-career artists, as well as curated shows. At Leila Heller Gallery 57th Street, an expanded program of artists is presented in a deeper art historical context via curated exhibitions mounted alongside concurrent exhibitions of well-established Modern and Contemporary artists.

Press Contact:

The Townsend Group (203) 622-1334

Robin Davis RobinDavis@TowsendGroupMedia.com

Red Jahncke RedJahncke@TowsendGrp.com