

MASTERPIECE[®]

2014 | LONDON

Art | Antiques | Design

2013 Review | 2014 Preview

A Common Thread
Art and collecting
in fashion

Modern Heirs
New collections in
country houses

A New Wave
New gallery and
museum building
in London

Plus
Erdem, Iwona
Blazwick and
Malcolm Rogers



THE BEST OF 2013

Last summer, Masterpiece London presented a vast range of world-class art, antiques and design. Overleaf, we feature a selection of works that sold during the last fair.

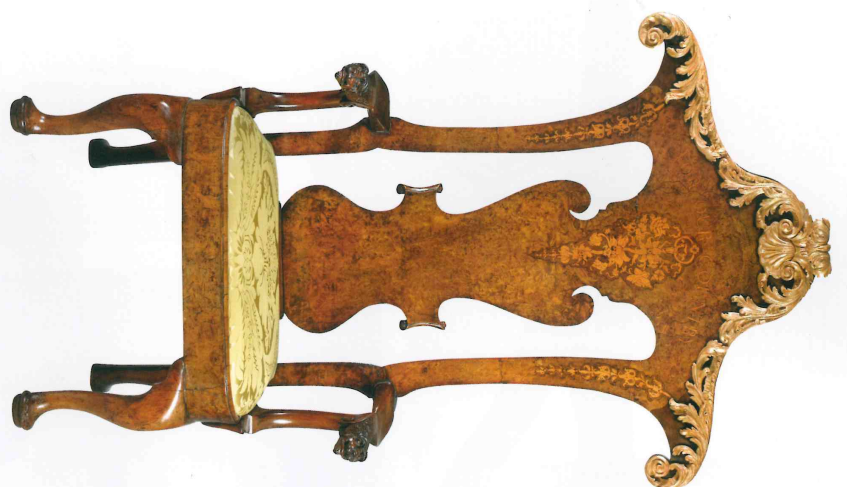


TOP Birth of Stars,
2007, Toshiva Oguma
(b. 1953), Brazilian
sculptor. Mixed media and
platinum leaf,
9x17cm, Adrian
Sassoon, London



RIGHT Nature morte
by Nicolas de Staël,
1954,
Nicolas de Staël
(1914-55), oil on
canvas, 50x61cm,
Galerie Applique-
Prézan, Paris, photo:
Xavier Grandjean,
© Adagp, Paris 2013

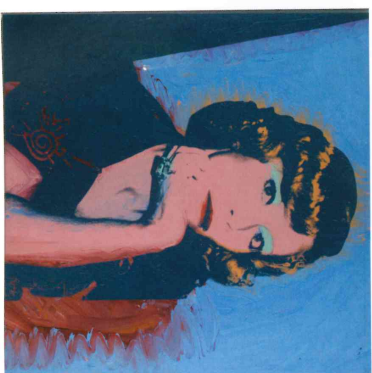
BELOW RIGHT
Caution! This is
Rodeo, 2007, Ika
Kuenzel (b. 1978),
mixed media with
original saddle,
11x45cm, Carpenters
Workshop Gallery,
London



LEFT George II
Master's Chair,
c.1750, English
walnut, 117x5cm,
Mallet Antiques,
London

BELOW *Portrait of a*
gentleman sculpted
in wax, set in original
shadow box, 1812,
Samuel Percy
(1753-1819), Elie
Shustan, Philadelphia

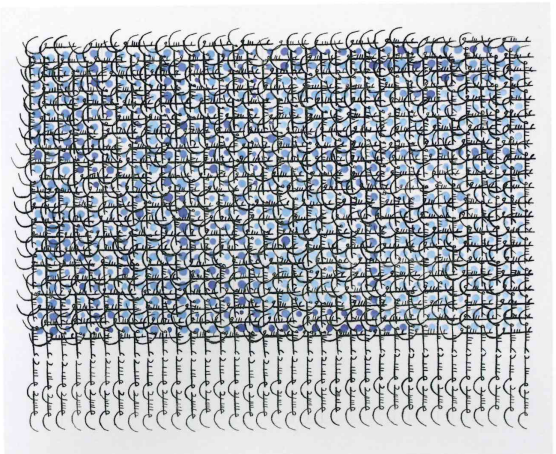
BELOW LEFT Cardi
Smith (Madame
Smith), 1974, Andy
Warhol (1928-87),
acrylic and silkscreen
ink on linen,
99.7x99.7cm,
Simon Dickinson,
London



BELOW Dining Table
from the 'Enlignum'
collection, 2013,
Joseph Walsh
(b. 1979), olive ash,
width 350cm, Peter
Petrou, London

BOTTOM RIGHT
Bird Brooch, c. 1960s,
Pierre Sterle (1905-
78), coral and
diamond set in titanium,
Synoptic & Chase,
London

BOTTOM LEFT
Shag Light (Pure)
2013, Chris Levine
(b. 1960), lenticular
lightbox, 75x55cm
Fine Art Society,
London



ABOVE LEFT Grid 21,
2013, Hadieh Shafie
(b. 1969), ink on
arched paper,
52x42cm, courtesy
the artist and Lella
Heller Gallery,
New York

ABOVE RIGHT Relief
of a Bacchant or
Maenad, Roman,
c. 1st century AD,
marble, H. 80cm,
Rupert Weiss Ancient
Art, London

BELOW The Baby,
grand piano, 2013,
Based Upon, sculpted
polyurethane foam,
polyurethane foam,
pigmented resin and
liquid metal, Based
Upon, London

