

RICHARD FISHMAN



BREAK, BLOW, BURN

LEILA HELLER.

17 East 76th St, Garden Level

New York, NY 10021

+1 (212) 249-7695

www.LeilaHellerGallery.com

RICHARD FISHMAN
BREAK, BLOW, BURN

Dedicated to my friend, Richard Rosenblum

Break, Blow, Burn

The Sculpture of Richard Fishman

By Deborah Barlow

"Break, blow, burn," a phrase from a sonnet by 17th century poet John Donne, is a plea for ecstatic transformation. The poet's god has engaged with him in too gentle a manner, and now he asks that nothing be held back. "Bend/Your force to break, blow, burn, and make me new." Donne is longing to be consumed by a numinous force field so much larger than himself.

That elicitation parallels the art making impulse. Visual imagination is a form-making consciousness, one that taps into a vast universe of the unseen and the undefined. While many practitioners are at ease with just a sip, others demand the full fire hose: complete immersion in that primordial unknowingness.

Richard Fishman lives and works in that rarefied terrain. After six decades of art making, he is still fearless and tireless in his conjurings, extracting a steady stream of unexpected forms from the cavernous Wunderkammer that is his studio in Providence, Rhode Island. Whether carved, cast, adapted, assembled, burned back, or extruded from one of several 3D printers, the objects he lays out before us are miraculous enchantments.

His works speak the parlance of the organic, but it is not derivative. We feel his hand in bringing these objects into form, but we also sense their otherworldly aura. Fishman's exquisitely crafted entities, scaled from hand-sized intimacy to the immense, could be downloads from another dimension or a postmodern recurrence of gonshi, ancient Chinese scholar's rocks. Ambiguity is woven into and through the gorgeous patinas, seductive crevasses, hollowed out grottos, unexpected protrusions, perforated textures. He offers us so many ways to contemplate and muse, to encounter the immaterial in the material. The mystery in his work feels bottomless, aligned with the words of a 13th century Zen master: "There are mountains hidden in treasures. There are mountains hidden in swamps. There are mountains hidden in the sky. There are mountains hidden in mountains. There are mountains hidden in hiddenness. This completes understanding."

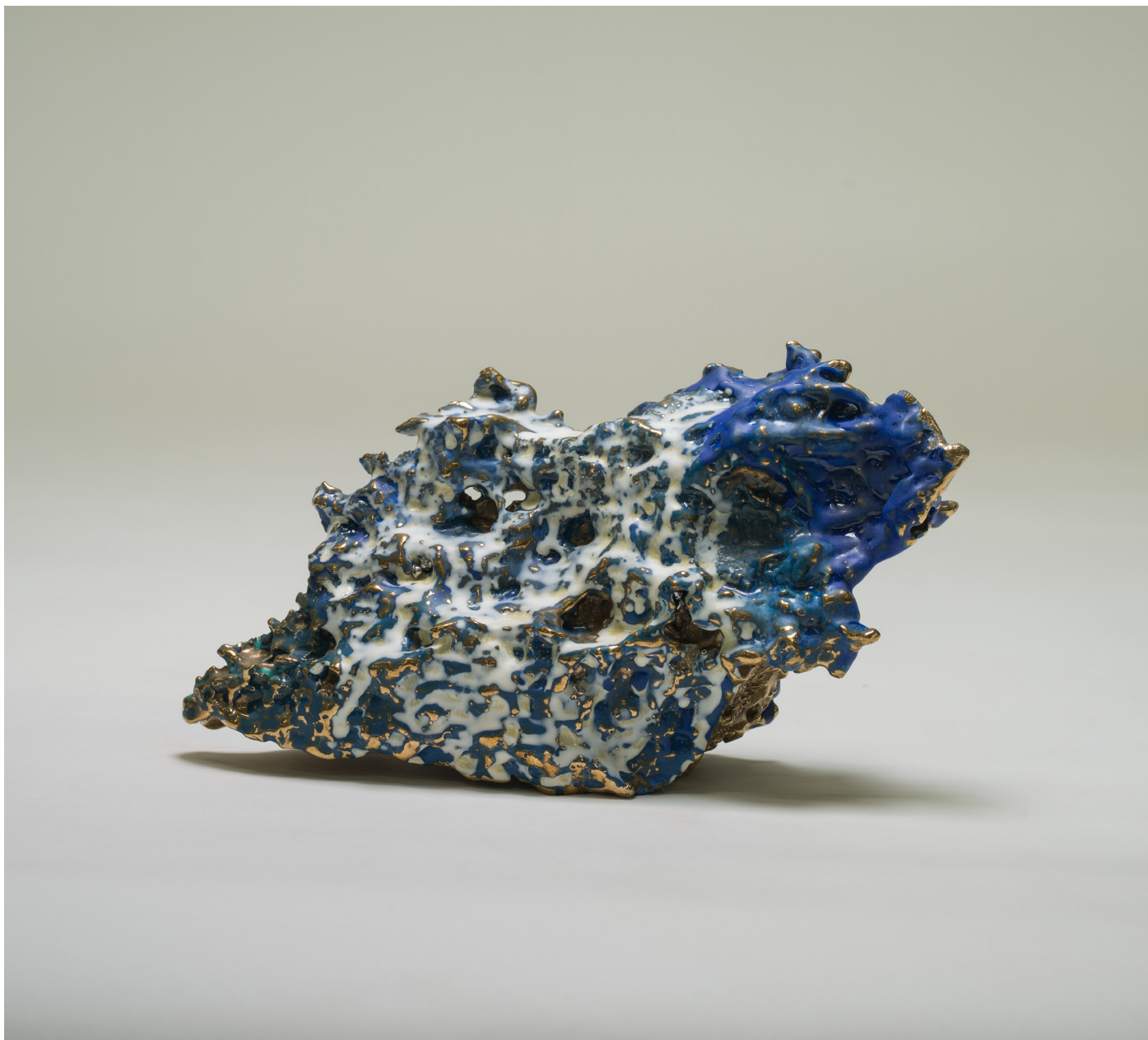
More than uncanny objects, these works are charismatic, a term used in its original sense: possessing a power that is divinely conferred. Their auratic presence holds us in a trance of looking long, of contemplating their possible provenance from somewhere beyond the known. Spending time with Fishman's work is a ceremony of consciousness. And as agile as Fishman is in his knowledge of art world ideas and trends, flummoxing fads come nowhere near the pure, quiet experience of just being with his creations.

Fiercely self-defined, Fishman is unconstrained by formalist adherences or affiliations. His primary devotion has been to creating "phenomenal presence," that hard to describe but tangible power that certain works of art possess. He is tenacious in stretching his techniques to their unexplored edges. "I take every tool and material I encounter and start from ground zero," he recently said. "I am forever a 'beginner,' still a child playing with rocks, turning them over to see what's underneath and then grinding them up into pigment." The output he has elicited from 3D printing far outstrips what others using that technology have been able to achieve. He has honed a singular method for bringing painterly color into the experience of 3 dimensionality, melding it indelibly into the tissue of the work itself. And his explorations in the domain of the small are so vital and startling they bring to mind the words of Joseph Cornell: "Tiny is the last refuge of the enormous."

Break. Blow. Burn. The largesse from a lifetime of tempering in a refiner's fire is, exquisitely and extravagantly, now on display.



#219: *Cyrano*, 2020
4.5 x 3.5 x 2.5 inches
Bronze



Untitled (#123), 2019
5.25 x 9 x 3.25 inches
Bronze, epoxy with pigment



Untitled (#120), 2021
4 x 7 x 7 inches
Painted bronze



Untitled (#121), 2019
5.25 x 9 x 3.5 inches
Painted bronze



#213: IRIDESCIENT, 2021
7.5 x 6.5 x 7 inches
Bronze, epoxy with pigment



#215: BLACK CHUNK, 2021
5 x 5 x 6.5 inches
Bronze, pigmented epoxy, and emulsion vinyl



#225: *DARK SMALL METEOR*, 2021
3 x 4 x 3.5 inches
Bronze, epoxy with pigment



Untitled (#132), 2021
3.25 x 4.75 x 2.75 inches
Painted bronze



#227: *TURQUOISE ON METEOR*, 2021
2.5 x 3.25 x 3 inches
Bronze, epoxy with pigment



#232: *SILVER KNOT*, 2021
4.25 x 5 x 5 inches
Bronze, epoxy with pigment



#218: *TURKISH DELIGHT*, 2021
3 x 4.75 x 4.45 inches
Bronze and pigmented epoxy



#226: *GLOW*, 2021
3 x 5 x 3.5 inches
Bronze, epoxy with pigment



#229: *CAT*, 2021
7 x 6 x 4.5 inches
Bronze, epoxy with pigment



#230: *NEW RED WEDGE*, 2019
5.25 x 9 x 3.5 inches
Bronze, epoxy with pigment



Untitled (#240), 2021
4.5x 5 x 4.5 inches
Bronze, epoxy with pigment



Untitled (#241), 2020
2.5 x 3 x 3 inches
Bronze, epoxy with pigment



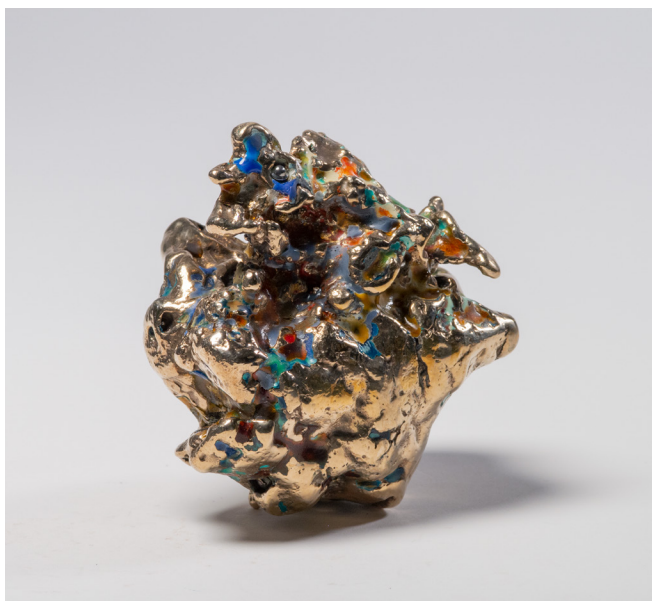
Untitled (#250), 2021
8 x 7.5 x 6 inches
Bronze and pigmented epoxy



Untitled (#255), 2021
5.25 x 7.5 x 4 inches
Bronze, epoxy with pigment



#216: *WAVE*, 2021
8 x 8 x 6 inches
Bronze, epoxy with pigment



Untitled (#104), 2021
2.5 x 3 x 3.25 inches
Bronze



Untitled (#105), 2021
3.5 x 3.75 x 3.25 inches
Bronze



Untitled (#257), 2020
2.5 x 4 x 4 inches
Painted bronze



Untitled (#259), 2021
3 x 3.5 x 3 inches
Painted bronze



Untitled (#122), 2019
5.25 x 9 x 3.5 inches
Painted bronze



Untitled (#135), 2021
4 x 3 x 3.5 inches
Painted bronze



Untitled (#260), 2021
2.5 x 6 x 2.25 inches
Bronze, epoxy with pigment



Untitled (#263), 2021
6.5 x 6.5 x 5.5 inches
Painted bronze



Untitled (#262), 2020
 4.25 x 2.5 x 2 inches
 Painted bronze



#233: PINK WITCH, 2021
 12.25 x 8.25 x 6 inches
 Bronze, bone, epoxy with pigment



Untitled (#235), 2021
 6.5 x 8 x 6 inches
 Bronze, epoxy with pigment



Untitled (#236), 2021
 6.5 x 8 x 7 inches
 Bronze



#234: *WITCH*, 2020
11 x 7.5 x 5.25 inches
Bronze, bone, and pigmented epoxy



#211: *GHOST*, 2020
3.5 x 9 x 8.5 inches
ABS



Untitled (#248), 2019
17 x 10.5 x 9.5 inches
Polystyrene and epoxy



Untitled (#243), 2021
14.25 x 12.25 x 10.5 inches
Multi-jet fusion and gesso



Untitled (#252), 2020
5 x 9.5 x 5.5 inches
Painted polystyrene



Untitled (#253), 2021
4 x 10.75 x 5.5 inches
Painted filament



#228: *GAUDÍ*, 2021
8.25 x 6 x 5.5 inches
Bronze



Untitled (#130), 2019
 3 x 3.5 x 2 inches
 Gold plated bronze



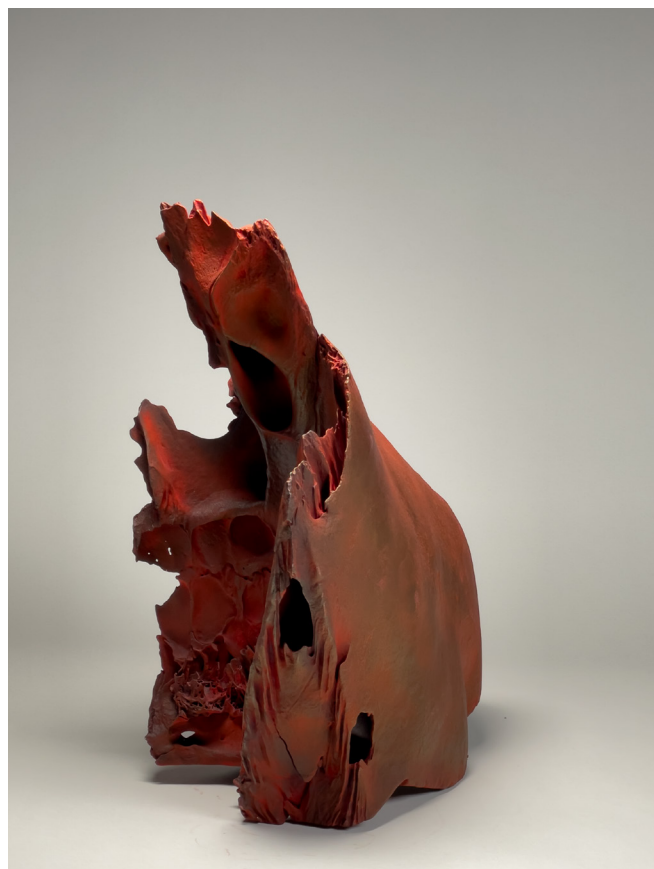
Untitled (#134), 2019
 3.75 x 7.75 x 6.5 inches
 Bronze



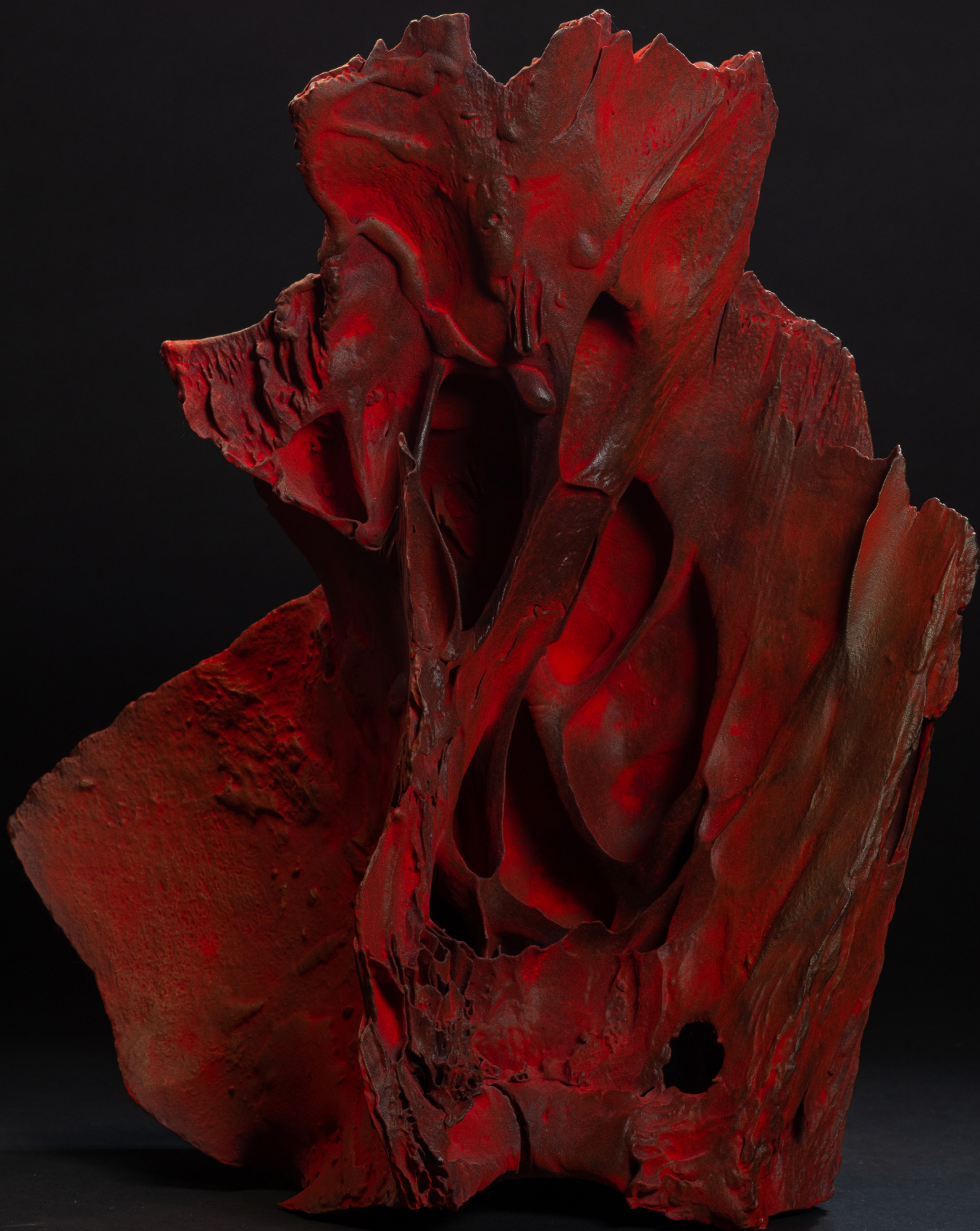
Untitled (#136), 2019
 8.5 x 12 x 6 inches
 Bronze



#137: CLEO'S MIRROR, 2019
 5 x 6.5 x 6 inches
 Bronze

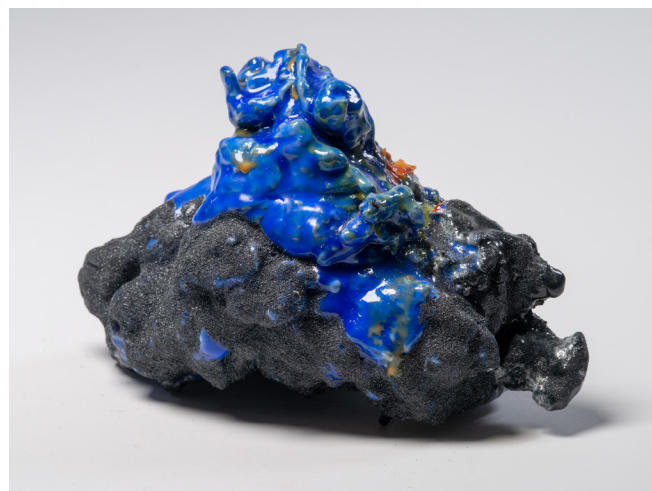


Untitled (#201), 2021
15.5 x 13 x 6.5 inches
Bronze, epoxy with pigment





Untitled (#107), 2020
5.5 x 16 x 6.5 inches
Painted polystyrene



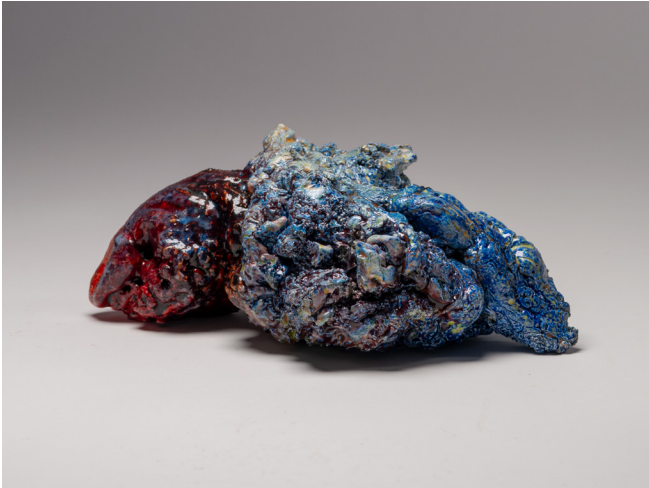
Untitled (#113), 2020
3.25 x 7 x 4.25 inches
Painted polystyrene, carbarundum



Untitled (#114), 2020
5 x 5.5 x 6 inches
Painted polystyrene



Untitled (#115), 2020
7 x 12.25 x 7.5 inches
Painted polystyrene



Untitled (#251), 2021
3 x 8.5 x 5 inches
Painted polystyrene



Untitled (#256), 2020
5 x 9.5 x 6.5 inches
Painted filament



Untitled (#244), 2021
11.5 x 14 x 14 inches
Multi-jet fusion and dye



Untitled (#249), 2020
5.25 x 9 x 3.5 inches
Bronze





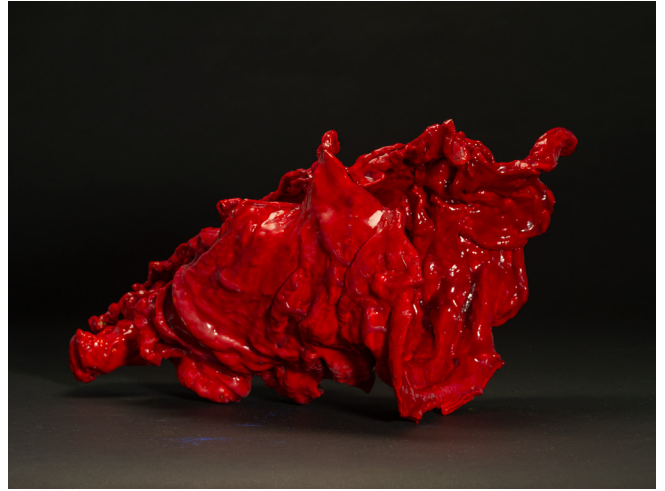
#209: *BONSAI FOR RR*, 2021
14 x 22 x 17 inches
Bronze, multi-jet fusion



#214: *LAPUS LAZULI* medium, 2021
5 x 9 x 7.5 inches
Multi-jet fusion and lapis lazuli pigment



#224: *STRANGE RED WHITE*, 2021
12.25 x 8.5 x 6 inches
Bone, PLA, and pigmented epoxy



Untitled (#231), 2021
10 x 18 x 12 inches
Multi-jet fusion, paint



#220: *CHINESE MOUNTAIN*, 2018
22.5 x 12 x 6.5 inches
Painted polystyrene



#217: *BLUE FEATHER*, 2021
8.5 x 6 x 7 inches
Multi-jet fusion, pigment and painted epoxy



Untitled (#203), 2020
11 x 16.5 x 10 inches
Multi-jet fusion



Untitled (#205), 2021
10 x 18 x 12 inches
Multi-jet fusion and dye



Untitled (#207), 2021
11.75 x 16.5 x 11 inches
Multi-jet fusion and dye



#208: THE ROCK, 2021
14 x 14 x 13 inches
Multi-jet fusion and gesso



#212: *OCHRE BONE*, 2021
15 x 17 x 7 inches
Multi-jet fusion and pigment



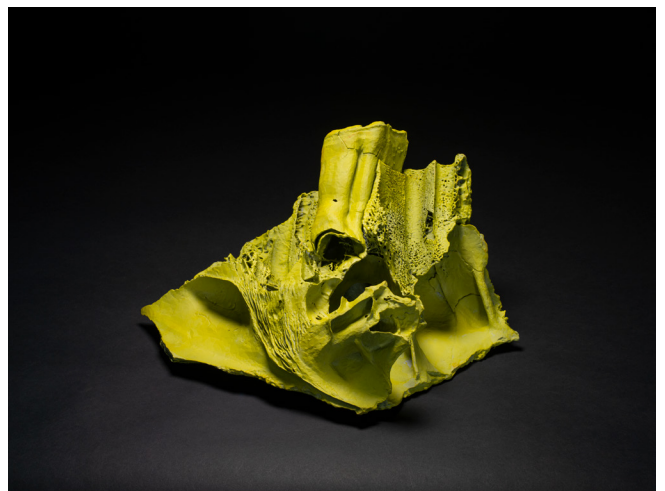
Untitled (#242), 2021
8.5 x 8.5 x 6 inches
Multi-jet fusion and dye



Untitled (#245), 2021
15 x 13 x 13 inches
Multi-jet fusion and dye



Untitled (#246), 2021
11.5 x 17 x 9.5 inches
Multi-jet fusion and lapis lazuli pigment



Untitled (#264), 2021
8.25 x 14 x 13 inches
Multi-jet fusion, pigment



Untitled (#247), 2021
12.5 x 19.5 x 13 inches
Multi-jet fusion

RICHARD FISHMAN

EDUCATION

1963-1965 M.F.A., Tulane University
1962-1963 B.F.A., Rhode Island School of Design
1959-1962 S.F.A.A., Boston University
1962 Yale-Norfolk School of Music and Art (summer)

PROFESSIONAL APPOINTMENTS

Emeritus Professor, Brown University
Founding Director, Granoff Center
for the Creative Arts
Director, Brown University Creative Arts Council,
2006-2016
Chairman, Art Department, Brown University,
1979-82, 1986 and 1998-2004
Director, Friends of List Art Center, 1982-87

ONE-PERSON EXHIBITIONS

2019 galerie Jean Brolly, Paris, France
2017 David Winton Bell Gallery, Providence, RI
2013 Rhode Island School of Design Museum of Art,
"One Room: Locally Made"
(One Day Installation), Providence, RI
2007 Providence Art Club, Providence, RI
1990 Cleveland Gallery, December, Providence, RI
1989 Cleveland Gallery, May, Providence, RI
1988 Body Sculpture, Boston, MA
1988 Jan Turner Gallery, Los Angeles, CA
1987 Salena Gallery, Long Island University,
Brooklyn, NY
1986 Brouhaha Gallery, Providence, RI
1982 Delahunty Gallery, New York City
1981 Linda Einfeld Gallery, Chicago, Illinois
1981 Dobrick Gallery, Chicago, Illinois
1980 Western Michigan University,
Kalamazoo, Michigan
1980 Museum of Art, Rhode Island School of Design,
Providence, RI
1980 Electrum Gallery, London
1979 Getler Pall Gallery, New York City
1979 Suzette Schochet Gallery, Newport, RI
1979 Ehrlich Gallery, New York City
1979 Body Sculpture, Boston, MA
1978 Max Hutchinson Gallery, New York City
1977 David Winton Bell Gallery, Brown University,
Providence, RI
1977 Suzette Schochet Gallery, Newport, RI
1975 Max Hutchinson Gallery, New York City
1979 Marcus Krakow Gallery, Boston, MA
1971 Marcus Krakow Gallery, Boston, MA
1971 The Institute of Contemporary Art,
Boston, MA
1970 Forum Gallery, New York City
1967 Penthouse Gallery, Montreal, Canada
1964 Swetzoff Gallery, Boston, MA

GROUP EXHIBITIONS

2019 "Traces of Time", Dedee Shattuck Gallery,
Westport, MA
2013 "Networks Rhode Island," Newport Art
Museum, Newport, RI
2007 Bell Gallery Brown University Faculty Exhibition
2003 Matrix Arts 2003 International Sacramento, CA
2003 Bell Gallery Brown University Faculty Exhibition
2002 City Arts Gallery, Providence, R.I.
2001 Manhasset Mill Gallery, Providence, R.I.
2000 State House Rotunda, Providence Rhode Island
1998 Museum of Art, Rhode Island School of Design
1997 Bell Gallery, Brown University, Faculty Exhibition
1996 "Artist's boxes," Museum of Art, Rhode Island
School of Design, Providence, RI
1995 "Artists' chairs," Museum of Art, RISD,
Providence, RI
1992 Body Sculpture, Boston, MA
1990 Body Sculpture, Boston, MA
1989 Body Sculpture, Boston, MA
1988 Addison Parks Gallery, Providence, RI
1988 Nielsen Gallery, Boston, MA
1988 M Gallery, Los Angeles, CA
1988 Gayle Wilson Gallery, South Hampton, NY
1988 Virginia Lynch Gallery, Tiverton, RI
1987 Lenore Gray Gallery, Providence, RI,
"Images of Holocaust"
1986 Bell Gallery, Brown University, Faculty Exhibition
1986 Brouhaha Gallery, Providence, Rhode Island
1986 Robert Brown Gallery, Washington, DC
1985-86 Artwear, New York City
1984-85 Body Sculpture, Boston, MA
1983 Jack Tilton Gallery, New York City
1983 Delahunty Gallery, New York City
1982 C.D.S. Gallery, New York City,
"Artists Choose Artists"
1981 Midwest Museum of American Art,
Elkhart, Indiana
1980 Wave Hill Museum, Outdoor Sculpture
Exhibition, New York City
1980 Portland Center for the Visual Arts, Portland
1979 Electrum Gallery, London
1979 Ehrlich Gallery, New York City
1975-79 Sculpture Now, Inc., New York City
1975 Donna Schnier, Inc., New York City
1974 Baltimore Museum of Art, Baltimore
1973 LoGiudice Gallery, New York City
1973 Max Hutchinson Gallery, New York City
1973 DeCordova Museum, Lincoln, MA
1973 M.I.T. Hayden Gallery, Boston
1972 Brockton Art Center, Brockton, MA
1970 The Jewish Museum, New York City
1969 Forum Gallery, New York City
1968 "Six Sculptors," Lowe Gallery, Hofstra University
1967 Thirteenth Annual Drawing and Sculpture,
Ball State University,

1967 Art for Embassies, Institute of Contemporary Art, Boston
 1966 Museum of Modern Art Penthouse Gallery, NYC
 1966 Drawing Show, Providence Art Club
 1966 Davis Art Gallery of Stephens College, Ohio
 1966 Institute of Contemporary Art, Boston
 1966-69 Rhode Island Arts Festival
 1965 Eleventh Annual Drawing and Sculpture, Ball State University,
 1964-65 New England Art, Part IV, Sculpture, DeCordova Museum, Lincoln, MA
 1964 1964 Invitational Boston Arts Festival
 1963 Sculpture Exhibit, Bundy Art Gallery, Waitsfield, Vermont
 1962-67 Swetzoff Gallery, Group Shows, Boston
 1961 New Talent Show, Nova Gallery, Boston

FELLOWSHIPS

1982-1983 John H. Simon Guggenheim Foundation Fellowship
 1974.1975 Howard Foundation Fellowship

AWARDS

2002 Gold Medal 2002 CASE award
 Art Association of Newport, RI
 1968 Award of Distinction, Mainstreams, Marietta College
 1967 Sculpture Prize, Rhode Island Arts Festival
 1962 First Prize, Boston Arts Festival, Sculpture

BIBLIOGRAPHY

Providence Journal Review, Channing Gray
 April 27, 2000
 Providence Journal, Article, Bill Van Siclen
 June 2, 1989
 Los Angeles Times, Review, May 1988
 Providence Journal, Review, Bill Van Siclen,
 April 24, 1987
 Long Island University, Salena Gallery catalogue,
 Essay, Addison Prks, 1987
 Providence Journal, Review, September 1986
 Art New England, Article, October, 1985
 Art New England, Susan Barahal, Article,
 November, 1984
 Arts Magazine, Therese Lichtenstein, Review,
 February, 1983
 New York Times, Long Island Section, Review,
 February, Phyllis Braff, January 29, 1983
 The Art Gallery Scene, KN Thurlbeck, Review,
 December, 1982
 New York Times, Vivien Raynor, Review,
 November 16, 1982
 The Providence Journal, Channing Gray,
 November 25, 1982
 Art News, Grace Glueck, "Artists" November, 1982

Arts Magazine, Kenneth Gaker, June, 1982
 New York Times, Grace Glueck, Review, May 1, 1981
 Art New England, Cathy Schulze, November, 1980
 The New Paper, Robin Wiseman, October 8-15, 1980
 Willamette Week, Paul Sutinen, Review,
 "Drawings of a Different Nature,"
 June 10, 1980
 Artspeak, Vol.No. 3, Review, January 3, 1980
 Art Forum, Jeffrey Keefe, Review, May 1978
 Denver Post, James Mills, Review, April 2, 1978
 Arts Magazine, Kermit Champa, Essay on Work,
 February, 1978
 Providence Eagle, Addison Parks,
 "Richard Fishman: Recent Works," 1977
 Soho Weekly News, David Gruen, Review,
 March 20, 1975
 Arts Magazine, Ellen Lubell, Review, April, 1975

This publication accompanies the exhibition
Richard Fishman: *Break, Blow, Burn*
September 14th - October 15th, 2021

LEILA HELLER.

17 East 76th St, Garden Level

New York, NY 10021

T: +1 (212) 249-7695

E: info@LeilaHellerGallery.com

www.LeilaHellerGallery.com

Leila Taghinia-Milani Heller, President

Ella Schwartz, Assistant Director

Marvin Doctor, Registrar

Essay by Deborah Barlow

Catalogue Designed by Marvin Doctor

Images for #211 and #247 courtesy of the Artist, Richard Fishman

All other images courtesy of Jiehao Su

Front Cover Image: #216: *WAVE*, 2021

Back Cover Image: *Untitled (#201)*, 2021



LEILA HELLER.