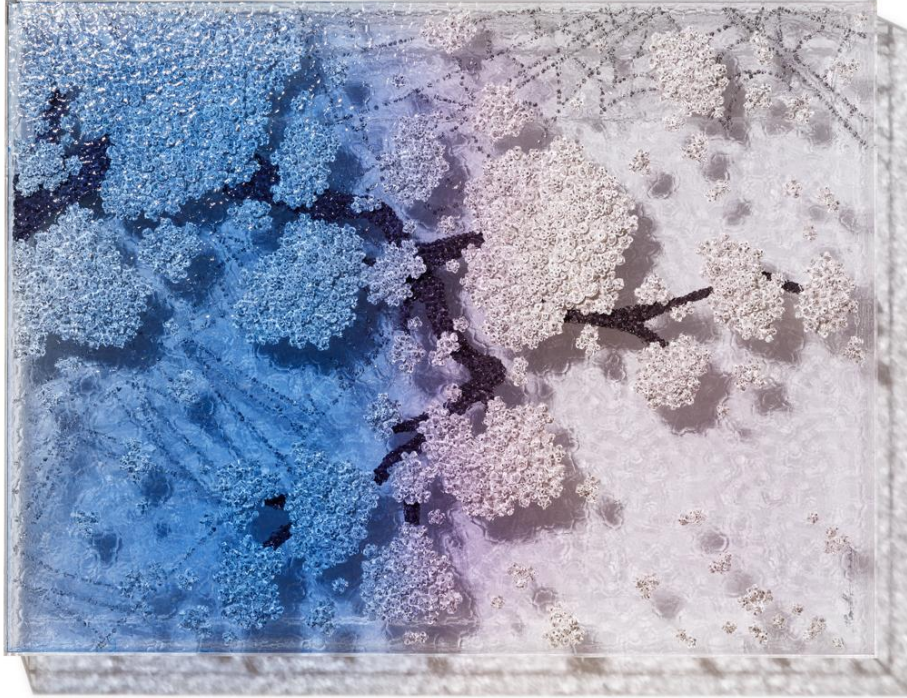


LEILA HELLER.

RAN HWANG

HOPE SPRINGS ETERNAL

May - July, 2021



Ran Hwang, *Mystery Life_BW*, 2021, Paper buttons, beads, pins, on plexiglass and acrylic frame, 35.4H x 47.2W x 4.3D in

Leila Heller is pleased to announce the solo exhibition of contemporary Korean artist Ran Hwang, titled "Hope Springs Eternal" and open May 1st to June 24th.

Due to the pandemic, everyone in the world is facing physical challenges and feeling mentally taxed. The health crisis has even prompted a significant increase in the rates of crime and suicide. "Hope Springs Eternal" consists of a series of work created during quarantine and fueled by the artist's compulsion to seek inner peace and mental stability. In this exhibition, Hwang focuses on small cherry blossom works that are bright and joyful, following the religious practices of Buddhism and hoping to bring light to people's hearts and heal their inner wounds.

Ran Hwang's artistic practice is deeply rooted in the philosophy of Zen Buddhism. Pondering the themes of cyclicity and learnt appreciation for the time's ephemerality accompanies the artist's works. Hwang's installations serve as monuments to a human's perpetual attempts to capture and prolong a fleeting moment. In this case, the cherry blossoms are subjects of Hwang's series as they stand to represent nature's vulnerability to imperfect conditions and inevitability of life's transient nature. In her Cherry Blossoms, the artist hopes to convey a meditative state to the audience, inviting the viewer to trace the delicate motions of the blossom's falling petals succumbed to the imminent progression of time.

LEILA HELLER.

ABOUT THE ARTIST

Ran Hwang has exhibited at several international institutions including the Hermitage Museum & Gardens, Virginia; Hermes Foundation, Singapore; Brooklyn Museum, New York; Queens Museum of Art, New York; The Hudson Valley Center for the Arts, New York; MASS MoCA, Massachusetts; Asian Civilization Museum, Singapore; Palais des Beaux Arts, Brussels; and The Seoul Arts Center Museum. Hwang's work is also a part of numerous private and public collections including The Dubai Opera, Dubai; The Brooklyn Museum, New York; The Des Moines Center for the Arts, Iowa; The National Museum of Contemporary Art, Seoul; The Hammond Museum, North Salem, NY; Museum of Fine Arts, Houston; UNESCO Paris Headquarters; and New York University.

ABOUT LEILA HELLER GALLERY

Since its establishment over three decades ago in New York, Leila Heller Gallery has gained worldwide recognition as a pioneer in promoting a creative dialogue and exchange between Western artists and Middle Eastern, Central and Southeast Asian artists. It has garnered a reputation for identifying and cultivating the careers of artists leaving a lasting impact on contemporary art and culture. Currently representing a diverse roster of Western and Middle Eastern artists, the gallery is also active in the American, European and Middle Eastern secondary art markets.

In November 2015, Leila Heller Gallery opened its first international location in Dubai's Alserkal Avenue. At 14,000 square feet, the state of the art gallery features three exhibition spaces, making it the largest gallery in the UAE. Showcasing leading regional and international artists, many of whom will be presenting their work in the Middle East for the first time, the gallery is dedicated to supporting the evolving practice of established artists.

For more information, images and prices, please contact ella@leilaheller.com